



HYDRAULIC TOOLS



Hydraulic cylinders
P.176 ►



Hydraulic pumps
P.177 ►



Hydraulic hoses
P.177 ►



Power pushers
P.178 ►



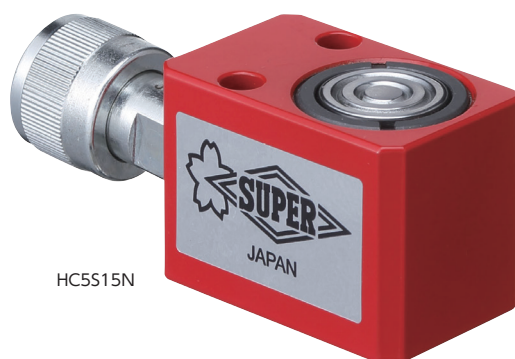
Hydraulic puller sets
P.178 ►



Pipe benders
P.178 ►



HC10S100N



HC5S15N

HC-S-N

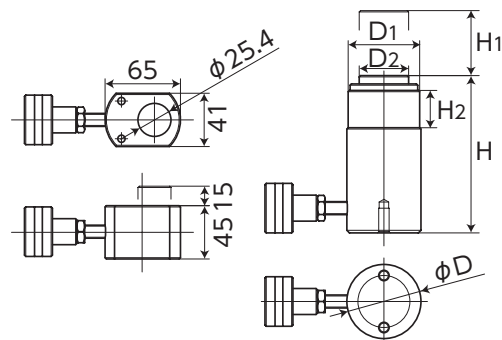
HYDRAULIC CYLINDER (Single Action Type)

Features

- Single action type with a built-in spring, so that hydraulic fluid moves back and forth inside one single high pressure hose.
- The maximum height is designed at the lowest possible.

Item No. display

HC	5	S	15	N
HC type	lifting capacity (ton) 5:50kN 10:100kN 23:230kN	spring return (S)	stroke (mm)	new type



Specifications

		50kN			100kN			230kN		
Item No.	Unit	HC5S15N	HC5S25N	HC5S75N	HC10S25N	HC10S50N	HC10S100N	HC23S25N	HC23S50N	HC23S100N
Max. allowable pressure	MPa	70			70			70		
Lifting capacity	kN	50			100			230		
Stroke : H1	mm	15	25	75	25	50	100	25	50	100
Min. height : H	mm	45	97	157	106	122	172	140	166	216
Head diameter : D2	mm	25.4			38.1			57.2		
External diameter : (dx) D	mm	41×65	49		57			85		
Pressure receiving area	cm ²	7.2			14.5			33.2		
Required oil volume	cm ³	11	18	55	37	79	150	86	170	339
Coupling connection opening dia.	Rc	3/8			3/8			3/8		
Included coupling (item No.)	—	HCFN			HCFN			HCFN		
Collar screw diameter : D1.	inch	—	1 13/16"-16		2 1/4"-14			3 5/16"-12		
Collar screw length : H2	mm	—	23		26			49		
N.W.	kg	1.5	2.0	3.0	2.0	2.3	3.3	5.9	6.4	8.2



HP500AN

HP-AN

HAND-OPERATED HYDRAULIC PUMP, Aluminum Alloy Body (for Single Action Type Cylinder)

The pump head is made of robust duralumin

► Features

- Aluminum pump net weight is about half of a steel pump.
- Output type pump with high / low pressure 2 steps automatic switching.

Item No.	Effective oil quantity (cm ³)	Max. allowable pressure (MPa)		Output quantity by one stroke (cc)		Output opening dia. (Rc)	Outer size (mm) L × H × T (approx.)	N.W. (kg)
		At high pressure	At low pressure	At high pressure	At low pressure			
HP500AN	500	70	1.4	1.6	6.3	3/8	503×120×98	4.5
HP1500AN	1,500	70	1.4	2.8	12.5	3/8	568×150×140	5.6



HP900N

HAND-OPERATED HYDRAULIC PUMP (for Single Action Type Cylinder)

► Feature

- Output type pump with high / low pressure 2 steps automatic switching.

Item No.	Effective oil quantity (cm ³)	Max. allowable pressure (MPa)		Output quantity by one stroke (cc)		Output opening dia. (Rc)	Outer size (mm) L × H × T (approx.)	N.W. (kg)
		At high pressure	At low pressure	At high pressure	At low pressure			
HP900N	900	70	1.4	2.8	12.5	3/8	510×150×136	7.5



HCFN

HH2N

HYDRAULIC HOSE

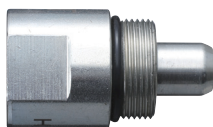
► Feature

- Can be used with all hand-operated pumps in general.

► Accessories

- Coupling HCFN (female) for cylinder side setting

Item No.	Size (mm)			Max. allowable pressure (MPa)	Hose material	Included coupling (male)	Connection screw dia. (R)	N.W. (kg)
	Internal dia.	External dia.	Full length					
HH2N	6.35	15	2,000	70	Oilproof synthetic rubber	HCMN	3/8	1.25



HCMN



HCFN

HCMN • HCFN

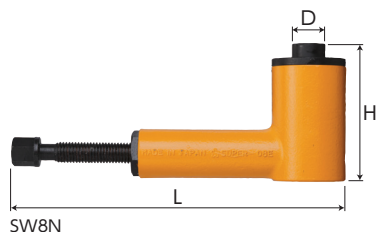
HYDRAULIC COUPLING

Product renewal for easier pairing with cylinder and hose

► Feature

- Generally, when connecting a cylinder to a high pressure hose, set HCFN (female) at the cylinder side and HCMN (male) at the hose side.

Item No.	Applicable hydraulic hose/device (cylinder) (item No.)	Connection screw dia. (R)	N.W. (g)
HCMN (male)	Hydraulic hose : HH2N	3/8	120
HCFN (female)	Hydraulic device : HC5S15N~HC23S100N•SPB520N•SPB1025N	3/8	130



Example of use



SW-N

POWER PUSHER

Features

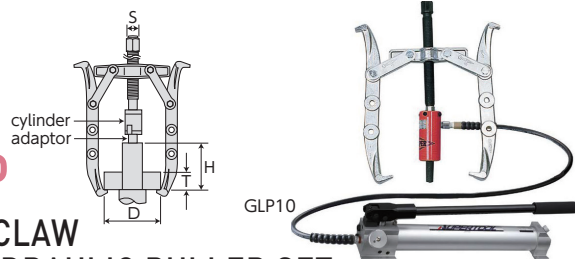
- Can be widely used as a compact high power jack.
- Can be set vertically, horizontally, diagonally, etc., in any direction.
- The piston is using a spring back method, so that when the screw is loosened, the position automatically gets down even with no load.
- When rusted or burned gears and pulleys are hard to get removed, use the power pusher as shown in the example of use. The hydraulic force of the power pusher enables easy removing operation.

Item No.	Size (mm)				Applicable puller		Max. load (kN)	N.W. (kg)
	Stroke	L	H	D	Gear puller	Shock speed puller		
SW8N	15	172~223	88~103	22	8~24	8~12	80	1.6
SW16N	15	210~284	98~113	25	18~24	12	160	2.7

* For the applicable gear puller, please refer to the gear puller category (P.156~161)

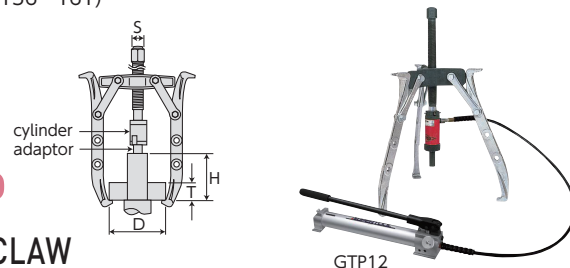
GLP

2-CLAW HYDRAULIC PULLER SET



GTP

3-CLAW HYDRAULIC PULLER SET



Feature

- Easy to remove rusted or burned gears and pulleys with hydraulic power.

Accessories

- Ratchet wrench with grip (RG), each 1 piece

Item No.	Size (mm)							Max. load (kN)	Set N.W. (kg)
	D	T	H		S	Forcing screw external dia.	Cylinder stroke		
			Claw reaching length		Forcing screw				
			Cylinder adaptor		hex. width across flats				
	Pulled object dia.	Pulled object width when D is at max.	L in use	S in use					
GLP10	100~250	125	125	150	30	28	50	100	16
GLP12	120~300	170	175	200	32	32	50	100	19
GLP15	150~375	185	180	210	41	38	50	140	27
GLP18	180~450	200	220	250	46	44	50	140	30
GLP24	280~600	175	300	—	46	44	50	230	63

Features

- Easy to remove rusted or burned gears and pulleys with hydraulic power.
- The setting is more stable with 3 claws.

Accessories

- Ratchet wrench with grip (RG), each 1 piece

Item No.	Size (mm)							Max. load (kN)	Set N.W. (kg)
	D	T	H		S	Forcing screw external dia.	Cylinder stroke		
			Claw reaching length		Forcing screw				
			Cylinder adaptor	hex. width across flats					
	Pulled object dia.	Pulled object width when D is at max.	L in use	S in use					
GTP10	100~250	125	125	150	32	32	50	100	20
GTP12	120~300	170	175	200	32	32	50	100	24
GTP15	150~375	185	180	210	41	38	50	140	35
GTP18	180~450	200	220	250	46	44	50	140	42

SPB-NPS

HYDRAULIC PIPE BENDER PUMP SET (Manual Type)



Features

- For bending (up to 90°) thick (JIS standards) stainless steel pipe, gas pipe, water pipe.
- The attachment bendshoe ensures accurate bending without damaging the pipe.

Accessories

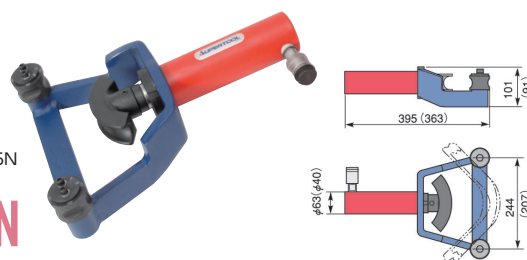
- Attachment bendshoes :
SPB520N : 10A, 15A, 20A
SPB1025N : 15A, 20A, 25A
- Hex key wrench for attachment fixing (4mm)
- Applicable pipe thickness
10A=min. 2.3mm
15A-20A=min. 2.8mm
25A=min. 3.2mm

⚠ Can be used only for tubes of exact external diameter.
Depending on the pipe material or thickness, the bending may not be accurate.

Set item No.	Set details item No.			Set N.W. (kg)
	Bender	Pump	Attachment bendshoe.	
SPB520NPS	SPB520N	HP900N	SPB10A·15A·20A	18
SPB1025NPS	SPB1025N	HP900N	SPB15A·20A·25A	23

SPB-N

PIPE BENDER (Hydraulic Type)



Note : () sizes for SPB520N

Feature

- Adapted to our hand-operated hydraulic pump and hose.

Accessories

- Attachment bendshoes :
SPB520N : 10A, 15A, 20A
SPB1025N : 15A, 20A, 25A
- Hex key wrench for attachment fixing (4mm)

⚠ Can be used only for tubes of exact external diameter.
Depending on the pipe material or thickness, the bending may not be accurate.

Item No.	Applicable pipe size name	Bending capacity (kN)	Max. allowable pressure	Cylinder stroke (mm)
SPB520N	10A·15A·20A	50	70MPa	127
SPB1025N	15A·20A·25A	100	70MPa	150

* N.W. includes SPB20AN or SPB25AN on each bender.