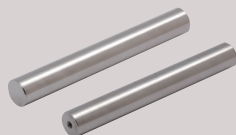


MAGNETIC SEPARATION



Magnets
P.266 ►



Magnet bars
P.272 ►



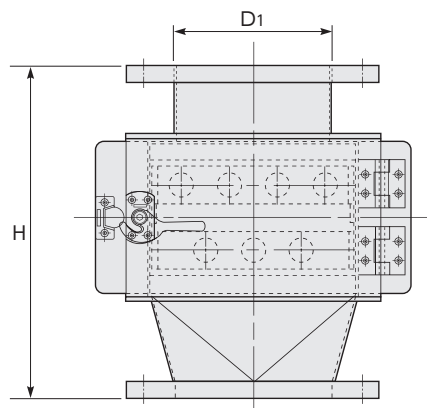
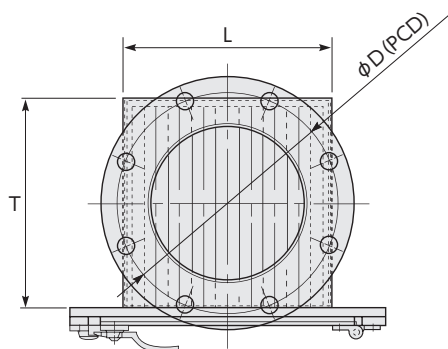
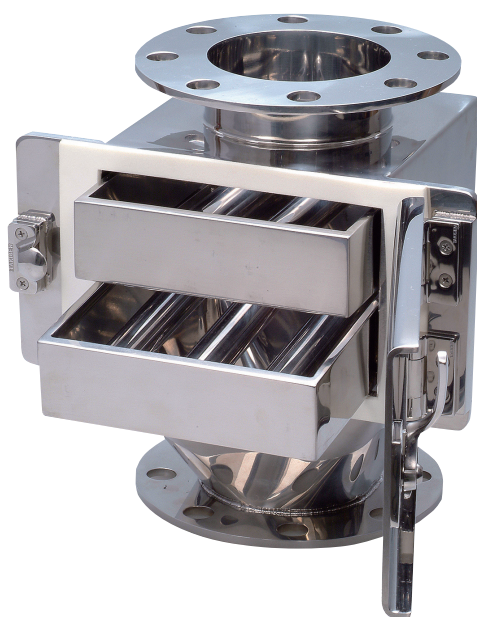
Magnetic sludge
strainers
P.276 ►



Magnetic pen bars
P.276 ►



Magnetic bars
P.276 ►



SMGU-A

■ GRATE MAGNET WITH HOUSING

► Features

- Attached to an air feeding line or to a pipe duct according to the pipe diameter or to the treatment capacity, this device catches fine iron powder mixed in granular raw materials or chemical powders with its strong magnets.
- The drawers on the front of the housing allow to remove the magnets for foreign matter cleaning.
- Double pipe type (easy to clean) also available upon request.
- Sizes out of the size table below also available upon request.
- Material : SUS304 (SUS316, SUS316L also available upon request)
- Surface finish : * Inner and outer surface : buff #400
 - * Inner surface : buff #400 ; Outer surface : pickling also available upon request.
 - * Surface magnetic flux density of 0.8T, 1.2T, 1.3T also available upon request.
- Example of magnet fixing : * Welding on the whole circumference.
 - * Screw fastening / single side welding (cantilever) also available upon request.
- Environment temperature : $\leq 80^{\circ}\text{C}$

Surface finish and magnet fixing method will be provided upon adequate briefing from the end-user.

Item No.	Size (mm)					Feed / discharge port	Magnet (pipe diameter $\phi 25$: SUS316L)		
	L	H	D	D1	T		Number of magnets	Number of drawer	Surface magnetic flux density
SMGU1100A	180	280	165	114.3	180	JIS 5K 100A	3	Total 3	1T (10,000G)
SMGU2100A		350					3·2	Total 5	
SMGU3100A		450					3·2·3	Total 8	
SMGU1125A	230	280	200	139.8	230	JIS 5K 125A	4	Total 4	
SMGU2125A		350					4·3	Total 7	
SMGU3125A		450					4·3·4	Total 11	
SMGU1150A	230	280	230	165.2	230	JIS 5K 150A	4	Total 4	
SMGU2150A		350					4·3	Total 7	
SMGU3150A		450					4·3·4	Total 11	
SMGU1200A	280	280	280	216.3	280	JIS 5K 200A	5	Total 5	
SMGU2200A		350					5·4	Total 9	
SMGU3200A		450					5·4·5	Total 14	
SMGU1250A	330	280	345	267.4	330	JIS 5K 250A	6	Total 6	
SMGU2250A		350					6·5	Total 11	
SMGU3250A		450					6·5·6	Total 17	
SMGU1300A	380	280	390	318.5	380	JIS 5K 300A	7	Total 7	
SMGU2300A		350					7·6	Total 13	
SMGU3300A		450					7·6·7	Total 20	

SMGS • SMGSH • SMGSS

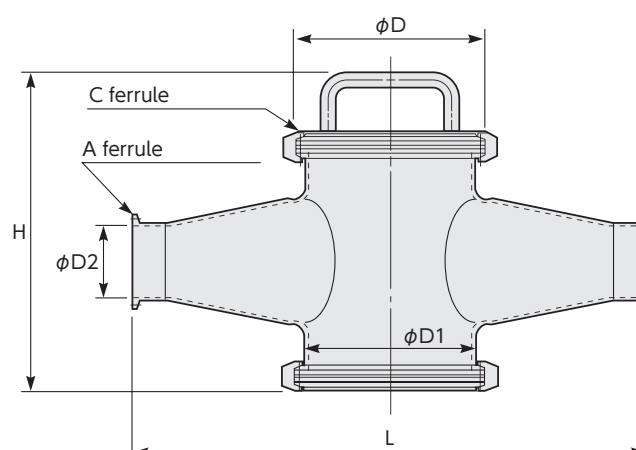
■ MAGNET FOR PIPELINE (Cross Tube Type 1)



► Features

- Set to food process pipelines of high viscosity food products such as juice, ham, sausage, jam, minced meat, seasoning, dairy products, miso paste, etc., this device catches magnetic fine particles with its strong magnets.
- Hygienic design suitable for food and pharmaceutical products.
- Sizes out of the size table below also available upon request.

■ Double pipe also available upon request.



■ General use

Item No.	Size (mm)							Number of magnets	Magnet pipe dia. (mm)	Finish	Material	Environment temperature	Surface max. magnetic flux density
	L	H	D	D1	D2	A	C						
SMGS1525	330	240	130	114	35.7	1.5S	4.5S	5	φ25 SUS316L	Buff #400	SUS304	≤80℃	1T (10,000G)
SMGS2025	330	240	130	114	47.8	2S	4.5S	5					
SMGS2525	420	260	155	140	59.5	2.5S	5.5S	7					
SMGS3025	420	260	155	140	72.3	3S	5.5S	7					
SMGS3525	420	260	155	140	85.1	3.5S	5.5S	7					

* SUS316L also available upon request.

* 0.8T (8,000G) also available upon request.

■ Heat resistant

Item No.	Size (mm)							Number of magnets	Magnet pipe dia. (mm)	Finish	Material	Environment temperature	Surface max. magnetic flux density
	L	H	D	D1	D2	A	C						
SMGSH1525	330	240	130	114	35.7	1.5S	4.5S	5	φ25 SUS316L	Buff #400	SUS304	≤120℃	1T (10,000G)
SMGSH2025	330	240	130	114	47.8	2S	4.5S	5					
SMGSH2525	420	260	155	140	59.5	2.5S	5.5S	7					
SMGSH3025	420	260	155	140	72.3	3S	5.5S	7					
SMGSH3525	420	260	155	140	85.1	3.5S	5.5S	7					

* SUS316L also available upon request.

■ General use, magnet pipe diameter φ20mm

Item No.	Size (mm)							Number of magnets	Magnet pipe dia. (mm)	Finish	Material	Environment temperature	Surface max. magnetic flux density
	L	H	D	D1	D2	A	C						
SMGSS1520	330	240	130	114	35.7	1.5S	4.5S	5	φ20 SUS316L	Buff #400	SUS304	≤80℃	1T (10,000G)
SMGSS2020	330	240	130	114	47.8	2S	4.5S	5					
SMGSS2520	420	260	155	140	59.5	2.5S	5.5S	7					
SMGSS3020	420	260	155	140	72.3	3S	5.5S	7					
SMGSS3520	420	260	155	140	85.1	3.5S	5.5S	7					

* SUS316L also available upon request.

* 0.8T (8,000G) also available upon request.



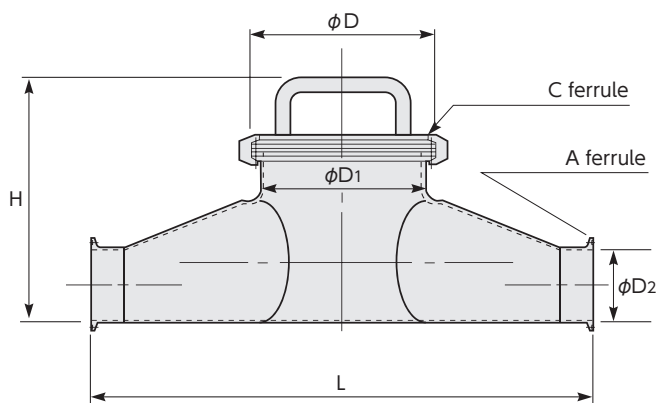
SMGOS • SMGOSH • SMGOSS

MAGNET FOR PIPELINE (Cross Tube Type 2)

Features

- Set to food process pipelines of high viscosity food products such as juice, ham, sausage, jam, minced meat, seasoning, dairy products, miso paste, etc., this device catches magnetic fine particles with its strong magnets.
- Hygienic design suitable for food and pharmaceutical products.
- Bottom structure allowing little residual liquid.
- Sizes out of the size table below also available upon request.

Double pipe also available upon request.



General use

Item No.	Size (mm)							Number of magnets	Magnet pipe dia. (mm)	Finish	Material	Environment temperature	Surface max. magnetic flux density
	L	H	D	D1	D2	A	C						
SMGOS1525	330	180	130	114.3	35.7	1.5S	4.5S	5	φ25 SUS316L	Buff #400	SUS304	≤80℃	1T (10,000G)
SMGOS2025	330	180	130	114.3	47.8	2S	4.5S	5					
SMGOS2525	420	205	155	139.8	59.5	2.5S	5.5S	7					
SMGOS3025	420	205	155	139.8	72.3	3S	5.5S	7					
SMGOS3525	420	205	155	139.8	85.1	3.5S	5.5S	7					

* SUS316L also available upon request.

* 0.8T (8,000G) also available upon request.

Heat resistant

Item No.	Size (mm)							Number of magnets	Magnet pipe dia. (mm)	Finish	Material	Environment temperature	Surface max. magnetic flux density
	L	H	D	D1	D2	A	C						
SMGOSH1525	330	180	130	114.3	35.7	1.5S	4.5S	5	φ25 SUS316L	Buff #400	SUS304	≤120℃	1T (10,000G)
SMGOSH2025	330	180	130	114.3	47.8	2S	4.5S	5					
SMGOSH2525	420	205	155	139.8	59.5	2.5S	5.5S	7					
SMGOSH3025	420	205	155	139.8	72.3	3S	5.5S	7					
SMGOSH3525	420	205	155	139.8	85.1	3.5S	5.5S	7					

* SUS316L also available upon request.

General use, magnet pipe diameter φ20mm

Item No.	Size (mm)							Number of magnets	Magnet pipe dia. (mm)	Finish	Material	Environment temperature	Surface max. magnetic flux density
	L	H	D	D1	D2	A	C						
SMGOSS1520	330	180	130	114.3	35.7	1.5S	4.5S	5	φ20 SUS316L	Buff #400	SUS304	≤80℃	1T (10,000G)
SMGOSS2020	330	180	130	114.3	47.8	2S	4.5S	5					
SMGOSS2520	420	205	155	139.8	59.5	2.5S	5.5S	7					
SMGOSS3020	420	205	155	139.8	72.3	3S	5.5S	7					
SMGOSS3520	420	205	155	139.8	85.1	3.5S	5.5S	7					

* SUS316L also available upon request.

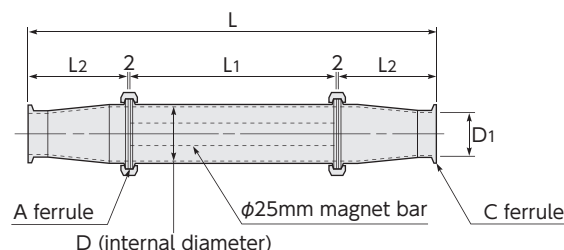


SMGE

MAGNET FOR PIPELINE (Straight Element)

► Features

- Efficient for mayonnaise or seasoning liquid in places with small throughput flow quantity.
- Simple structure allowing easy disassembling and cleaning.
- Compact design that takes little space when installed.
- Hygienic design suitable for food and pharmaceutical products.



Item No.	Size (mm)							Magnet pipe dia. (mm)	Finish	Material	Environment temperature	Surface max. magnetic flux density
	L	L1	L2	D	D1	A	C					
SMGE10	350	226	60	φ47.8	φ23	2S	1S	φ25 SUS316L	Buff #400	SUS304	≤80°C	1T (10,000G)
SMGE15	350	226	60	φ47.8	φ35.7	2S	1.5S					
SMGE20	350	226	110	φ59.5	φ47.8	2.5S	2S					

* SUS316L also available upon request.

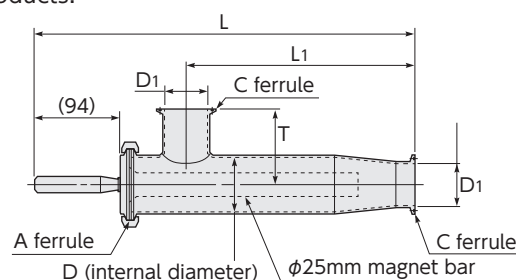
* 1.2T (12,000G), 0.8T (8,000G) also available upon request. Sizes out of the above size table also available upon request.

SMGL • SMGLW

MAGNET FOR PIPELINE (L-shaped Element)

► Features

- Efficient for juice, dairy products, tea, soy sauce, chili oil, minced meat, seasoning liquid, etc. in places with small throughput flow quantity.
- Simple structure allowing easy disassembling and cleaning.
- Compact design that takes little space when installed.
- Hygienic design suitable for food and pharmaceutical products.



Item No.	Size (mm)							Magnet pipe dia. (mm)	Finish	Material	Environment temperature	Surface max. magnetic flux density
	L	L1	D	D1	T	A	C					
SMGL10	(359)	200	φ47.8	φ23	55	2S	1S	φ25 SUS316L	Buff #400	SUS304	≤80°C	1T (10,000G)
SMGL15	(359)	200	φ47.8	φ35.7	70	2S	1.5S					
SMGL20	(416)	250	φ59.5	φ47.8	82	2.5S	2S					

* SUS316L also available upon request.

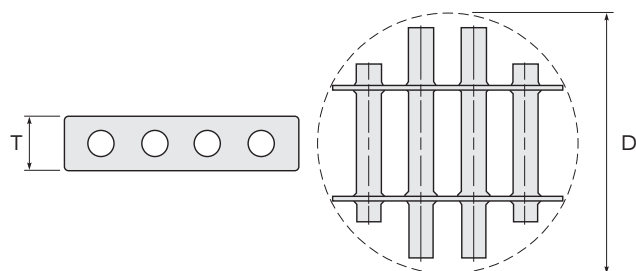
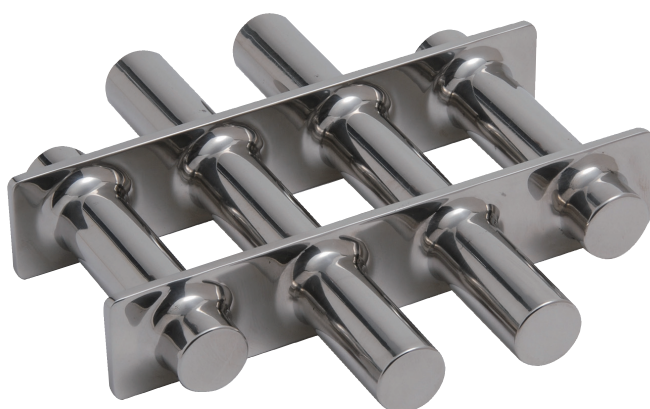
* 1.2T (12,000G), 0.8T (8,000G) also available upon request. Sizes out of the size table above also available upon request.

■ Double pipe type

Item No.	Size (mm)							Magnet pipe dia. (mm)	Finish	Material	Environment temperature	Surface max. magnetic flux density
	L	L1	D	D1	T	A	C					
SMGLW10	(391)	200	φ47.8	φ23	55	2S	1S	φ25 SUS316L	Buff #400	SUS304	≤80°C	0.8T (8,000G)
SMGLW15	(391)	200	φ47.8	φ35.7	70	2S	1.5S					
SMGLW20	(448)	250	φ59.5	φ47.8	82	2.5S	2S					

* Sizes out of the size table above also available upon request.





SMGM • SMGMH • SMGSM

GRATE MAGNET (Round-shaped)

Features

- Attached to a round-shaped hopper, the strong magnets displayed in grid catch foreign matters like fine iron powder or stainless steel abrasion powder during the fall of granular raw material.
- Ideal for removing foreign matters in food, pharmaceutical or chemical production lines.
- Hygienic design allowing use inside liquid tank.
- Can also be designed and manufactured according to an existing hopper.
- 2-layer type available upon request.
- Sizes out of the size table below also available upon request.

■ The hygienic finish enabled by original welding makes it ideal for food and pharmaceutical products.



Item No.	Size (mm)		Number of magnets	Magnet pipe dia. (mm)	Magnet flat frame		Environment temperature	Surface max. magnetic flux density
	D	T			Finish	Material		
SMGM200	φ200	50	4	φ25 SUS316L SUS304	Buff#400	SUS304	≤80℃	1T (10,000G)
SMGM250	φ250	50	5					
SMGM300	φ300	50	6					
SMGM350	φ350	50	7					
SMGM400	φ400	50	8					

* Heat resistant type also available upon request.

* SUS316 also available upon request.

Item No.	Size (mm)		Number of magnets	Magnet pipe dia. (mm)	Magnet flat frame		Environment temperature	Surface max. magnetic flux density
	D	T			Finish	Material		
SMGMH200	φ200	50	4	φ25 SUS316L	Buff#400	SUS304	≤80℃	1.2T (12,000G)
SMGMH250	φ250	50	5					
SMGMH300	φ300	50	6					
SMGMH350	φ350	50	7					
SMGMH400	φ400	50	8					

* SUS316 also available upon request.

Item No.	Size (mm)		Number of magnets	Magnet pipe dia. (mm)	Magnet flat frame		Environment temperature	Surface max. magnetic flux density
	D	T			Finish	Material		
SMGSM200	φ200	50	4	φ20 SUS316L	Buff#400	SUS304	≤80℃	1T (10,000G)
SMGSM250	φ250	50	5					
SMGSM300	φ300	50	6					
SMGSM350	φ350	50	7					
SMGSM400	φ400	50	8					

* SUS316 also available upon request.

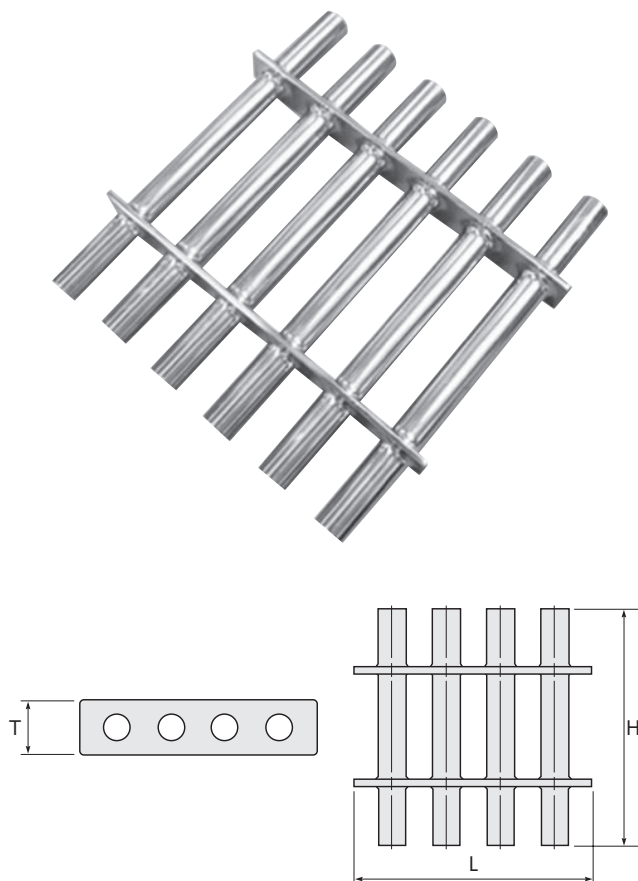
SMGK • SMGKH • SMGSK

GRATE MAGNET (Square-shaped)

Features

- Attached to a square-shaped hopper, the strong magnets displayed in grid catch foreign matters like fine iron powder or stainless steel abrasion powder during the fall of granular raw material.
- Ideal for removing foreign matters in food, pharmaceutical or chemical production lines.
- Hygienic design allowing use inside liquid tank.
- Can also be designed and manufactured according to an existing hopper.
- 2-layer type available upon request.
- Sizes out of the size table below also available upon request.

The hygienic finish enabled by original welding makes it ideal for food and pharmaceutical products.



Item No.	Size (mm)			Number of magnets	Magnet pipe dia. (mm)	Magnet flat frame		Environment temperature	Surface max. magnetic flux density
	L	H	T			Finish	Material		
SMGK2020	200	200	50	4	φ25 SUS316L SUS304	Buff#400	SUS304	≤80℃	1T (10,000G)
SMGK2025	200	250	50	4					
SMGK2525	250	250	50	5					
SMGK2530	250	300	50	5					
SMGK3030	300	300	50	6					
SMGK3040	300	400	50	6					
SMGK4040	400	400	50	8					

* Heat resistant type also available upon request.

* SUS316 also available upon request.

Item No.	Size (mm)			Number of magnets	Magnet pipe dia. (mm)	Magnet flat frame		Environment temperature	Surface max. magnetic flux density
	L	H	T			Finish	Material		
SMGKH2020	200	200	50	4	φ25 SUS316L	Buff#400	SUS304	≤80℃	1.2T (12,000G)
SMGKH2025	200	250	50	4					
SMGKH2525	250	250	50	5					
SMGKH2530	250	300	50	5					
SMGKH3030	300	300	50	6					
SMGKH3040	300	400	50	6					
SMGKH4040	400	400	50	8					

* Heat resistant type also available upon request.

* SUS316 also available upon request.

Item No.	Size (mm)			Number of magnets	Magnet pipe dia. (mm)	Magnet flat frame		Environment temperature	Surface max. magnetic flux density
	L	H	T			Finish	Material		
SMGSK2020	200	200	50	4	φ20 SUS316L	Buff#400	SUS304	≤80℃	1T (10,000G)
SMGSK2025	200	250	50	4					
SMGSK2525	250	250	50	5					
SMGSK2530	250	300	50	5					
SMGSK3030	300	300	50	6					

* SUS316 also available upon request.

MAGNET BAR (Permanent Magnet / Nd Rare Earth)

"High magnetism, high density, high grade" finish

► Features

- Waterproof structure with hygienic design and high-grade finish enabled by special welding.
- Single unit that can be set freely, allowing a large range of application.
- Required length, diameter, magnetic force available upon request.

■ Pipe surface

- Material : SUS316L
- Surface finish : buff #400 finish *environment temperature : ≤80℃

► Applications

- Removal of fine iron powder, stainless steel abrasion powder from powder, grains, liquid with strong magnet.
- Ideal for removing foreign matters in food, pharmaceutical or chemical production lines.

* Surface max. magnetic flux density :
1.3T (13,000G) also available upon request.

SMGB • SMGB-T

■ MAGNET BAR, POWERFUL TYPE

- Surface max. magnetic flux density : 0.8T (8,000G)
- Inner permanent magnet characteristic value : 1.2T (12,000G)
- Tapping hole : M6×8

Item No.		Pipe φ 25× length (mm)	N.W. (kg)
Without tapping hole	With tapping hole		
SMGB810	SMGB810T	100	0.36
SMGB815	SMGB815T	150	0.54
SMGB820	SMGB820T	200	0.73
SMGB825	SMGB825T	250	0.91
SMGB830	SMGB830T	300	1.09
SMGB835	SMGB835T	350	1.27
SMGB840	SMGB840T	400	1.45
SMGB850	SMGB850T	500	1.82
SMGB860	SMGB860T	600	2.18



SMGB • SMGB-T

■ MAGNET BAR, SUPER POWERFUL TYPE

- Surface max. magnetic flux density : 1.0T (10,000G)
- Inner permanent magnet characteristic value : 1.35T (13,500G)
- Tapping hole : M6×8

Item No.		Pipe φ 25× length (mm)	N.W. (kg)
Without tapping hole	With tapping hole		
SMGB1010	SMGB1010T	100	0.36
SMGB1015	SMGB1015T	150	0.54
SMGB1020	SMGB1020T	200	0.73
SMGB1025	SMGB1025T	250	0.91
SMGB1030	SMGB1030T	300	1.09
SMGB1035	SMGB1035T	350	1.27
SMGB1040	SMGB1040T	400	1.45
SMGB1050	SMGB1050T	500	1.82
SMGB1060	SMGB1060T	600	2.18

SMGB • SMGB-T

■ MAGNET BAR, SUPER POWERFUL TYPE

- Surface max. magnetic flux density : 1.2T (12,000G)
- Inner permanent magnet characteristic value : 1.43T (14,300G)
- Tapping hole : M6×8

Item No.		Pipe φ 25× length (mm)	N.W. (kg)
Without tapping hole	With tapping hole		
SMGB1210	SMGB1210T	100	0.36
SMGB1215	SMGB1215T	150	0.54
SMGB1220	SMGB1220T	200	0.73
SMGB1225	SMGB1225T	250	0.91
SMGB1230	SMGB1230T	300	1.09
SMGB1235	SMGB1235T	350	1.27
SMGB1240	SMGB1240T	400	1.45
SMGB1250	SMGB1250T	500	1.82
SMGB1260	SMGB1260T	600	2.18

MAGNET BAR (Double Pipe) (Permanent Magnet / Nd Rare Earth)

"High magnetism, high density, high grade" finish

► Features

- Hygienic design and high-grade finish enabled by special welding.
- The double pipe structure allows to remove the iron powder easily without getting your hand dirty just by pulling out the magnet bar.
- Single unit that can be set freely, allowing a large range of application.
- All parts made of stainless steel, including the grip part.
- Required length, diameter, magnetic force available upon request.

► Applications

- Ideal in cases where there is a comparatively high quantity of iron powder or the likes mixed to the material.

■ Pipe surface

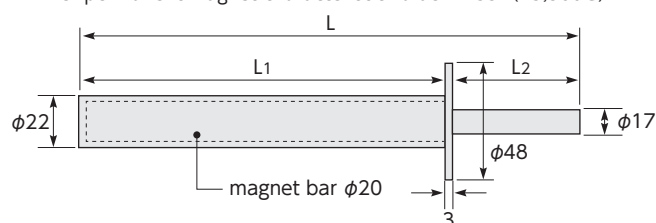
- Material : SUS316L
- Surface finish : buff #400 finish
- * environment temperature : $\leq 80^{\circ}\text{C}$



SMGB-W

■ MAGNET BAR, POWERFUL TYPE (Double Pipe)

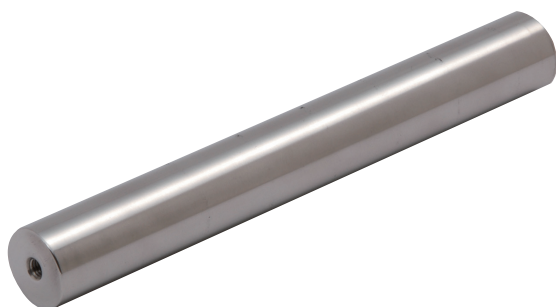
- Surface max. magnetic flux density : 0.8T (8,000G)
- Inner permanent magnet characteristic value : 1.35T (13,500G)



Item No.	φExternal diameter size (mm)			N.W. (kg)
	L	L1	L2	
SMGB815W	242	150	92	0.63
SMGB820W	292	200	92	0.77
SMGB825W	342	250	92	0.92
SMGB830W	392	300	92	1.06

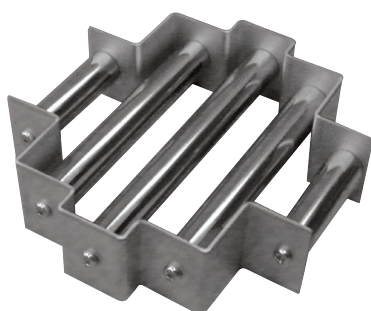
MAGNET PRODUCTS APPLICATION BY INDUSTRY

Food	Beverage	Separation of stainless steel abrasion powder and iron oxide at the pipeline after grinding for coffee, juice, tea, powder milk, etc.
	Meat processing	Separation of stainless steel abrasion powder coming from the blades during meat processing.
	Powder seasonings	Separation of the iron and stainless steel abrasion powder after grinding for red pepper, wasabi, sprinkle, etc.
	Liquid seasonings	Separation of stainless steel abrasion powder and iron oxide at the pipeline after grinding for soy sauce, soup, miso paste, etc.
	Confectioneries	Separation of stainless steel abrasion powder at the pipeline after grinding for chocolate, beans, etc.
	Cereals	Separation of abrasion powder coming from cereal refining.
Pharmaceuticals	Pharmaceutical products	Separation of stainless steel abrasion powder occurring during pharmaceutical product raw material pulverizing.
	Herbal medicines	Separation of the abrasion powder coming from the blades during medicinal herb cutting.
Cosmetics	Cosmetics related	Separation of stainless steel abrasion powder at the pipeline after raw material grinding.
Chemicals	Resins related	Separation of magnetic foreign matters from granular or pellet shape raw material at the pipeline of the injection molding machine.
	Rubbers related	Separation of magnetic foreign matters from steel tire reclaimed rubber.
Fertilizers	Fertilizers, livestock feed	Removal of toxic iron powder mixed into fertilizers, livestock feed.
Papermaking	Paper	Removal of magnetic foreign matters from recycled paper process line and separation of nail or bolt fragments from wood chips.
Glass	Glassworks	Separation of iron powder mixed into glass raw material or grinded glass.
Ceramics	Pottery and porcelain	Separation of iron powder from pottery and porcelain raw material.

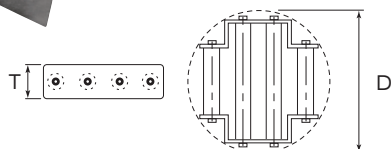


- Surface max. magnetic flux density : 0.18T (1,800G)
- Inner permanent magnet characteristic value : 0.32T (3,200G)
- Both end tapping holes : M6×8
* Without tapping hole also available upon request.

Item No.	Pipe ϕ 25×length (mm)	N.W. (kg)
SMGB10T	100	0.32
SMGB15T	150	0.4
SMGB20T	200	0.52
SMGB25T	250	0.65
SMGB30T	300	0.73
SMGB35T	350	0.85



- Magnet flat frame
- Material : SUS304
- Finish : Pickling



SMGPM

■ GRATE MAGNET FOR RESIN MOLDING MACHINE (Round-shaped)

► Features

- Attached to a round-shaped hopper, the strong magnets displayed in grid catch fine iron powder during the fall of pellet shape or granular raw material.
- Can also be designed and manufactured according to an existing hopper.
- Heat resistant type also available upon request.
- Sizes out of the size table below also available upon request.
- Environment temperature : $\leq 80^{\circ}\text{C}$
- Surface max. magnetic flux density : 0.4T (4,000G)

Item No.	Size (mm)		Number of magnets	Pipe dia. (mm)
	D	T		
SMGPM200	$\phi 200$	50	4	$\phi 22$ SUS304
SMGPM250	$\phi 250$	50	5	
SMGPM300	$\phi 300$	50	6	
SMGPM350	$\phi 350$	50	7	
SMGPM400	$\phi 400$	50	8	

* 0.8T (8,000G), 0.6T (6,000G) also available upon request.

* 1.0T (10,000G), $\phi 25$ diameter design also available upon request.

SMGB-T

■ MAGNET BAR, STANDARD TYPE (Permanent Magnet Ferrite)

► Features

- Single unit that can be set freely, like in grate shape, allowing a large range of application.
- The waterproof structure enabled by special welding allows the use inside liquids.
- Required length, diameter, magnetic force available upon request.
- Can be used efficiently in front of discharge filter.

■ Pipe surface

- Material : SUS304
- Surface finish : Buff #200 finish
- Environment temperature : $\leq 80^{\circ}\text{C}$

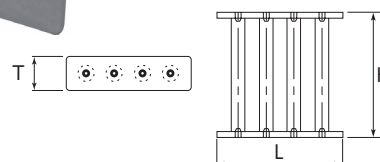
► Applications

- Ideal for iron removal inside powder, granular or liquid raw material.
- Removal of iron powder in food, pharmaceutical, chemical production lines.

Item No.	Pipe ϕ 25×length (mm)	N.W. (kg)
SMGB40T	400	0.97
SMGB45T	450	1.06
SMGB50T	500	1.18
SMGB55T	550	1.3
SMGB60T	600	1.43



- Magnet flat frame
- Material : SUS304
- Finish : Pickling



SMGPK

■ GRATE MAGNET FOR RESIN MOLDING MACHINE (Square-shaped)

► Features

- Attached to a square-shaped hopper, the strong magnets displayed in grid catch fine iron powder during the fall of pellet shape or granular raw material.
- Can also be designed and manufactured according to an existing hopper.
- Heat resistant type also available upon request.
- Sizes out of the size table below also available upon request.
- Environment temperature : $\leq 80^{\circ}\text{C}$
- Surface max. magnetic flux density : 0.4T (4,000G)

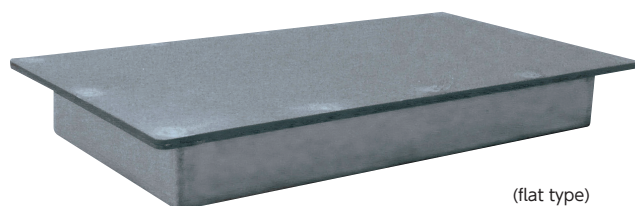
Item No.	Size (mm)			Number of magnets	Pipe dia. (mm)
	L	H	T		
SMGPK150	150	150	50	3	$\phi 22$ SUS304
SMGPK200	200	200	50	4	
SMGPK250	250	250	50	5	
SMGPK300	300	300	50	6	
SMGPK350	350	350	50	7	
SMGPK400	400	400	50	8	

* 0.8T (8,000G), 0.6T (6,000G) also available upon request.

* 1.0T (10,000G), $\phi 25$ diameter design also available upon request.

SMP-F・SMP-J

MAGNET PLATE

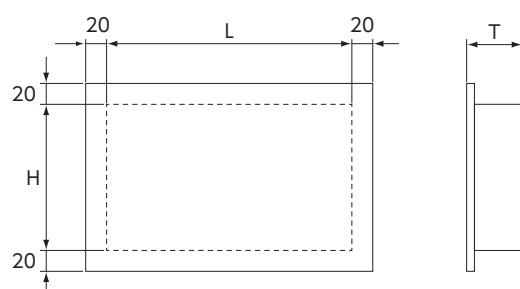


(flat type)

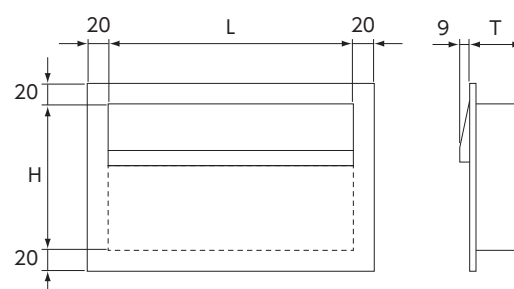
► Features

- Attached to a chute or a hopper, the device catches and separates magnetic foreign matters like iron powder from the raw material in chemical, pharmaceutical or other granular material industries.
- Sizes out of the size table below also available upon request.

Flat type



Magnetic pole board type



► Features

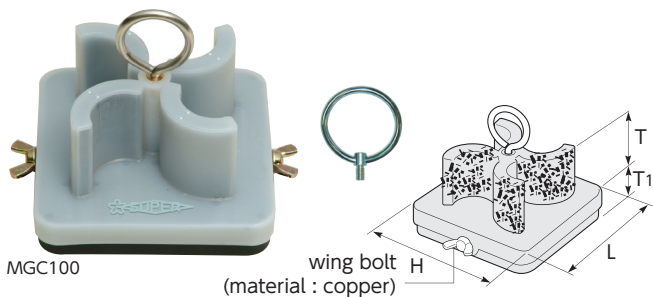
- High attraction force at far distance.
- Holes can be processed at the flange part.
- Material : SUS304
- Surface magnetic flux density : approx. 0.13T (1,300G)

Item No.	Size(mm)		
	L	H	T
SMP1515F	150	150	45
SMP1520F	200		
SMP1525F	250		
SMP1530F	300		
SMP1535F	350		
SMP1540F	400		
SMP1545F	450	200	55
SMP1550F	500		
SMP1560F	600		
SMP2020F	200		
SMP2025F	250		
SMP2030F	300		
SMP2035F	350	200	55
SMP2040F	400		
SMP2045F	450		
SMP2050F	500		
SMP2060F	600		
SMP3030F	300	200	55
SMP3035F	350		
SMP3040F	400		
SMP3045F	450		
SMP3050F	500		
SMP3060F	600		

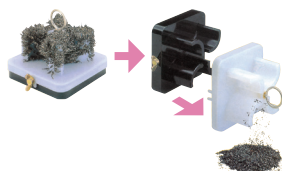
► Features

- Magnetic pole board set at the attraction surface.
- The magnetic pole board enables the retention of the caught iron scrap, preventing them from getting swept away with the raw material.
- Material : SUS304
- Surface magnetic flux density : approx. 0.25T (2,500G)

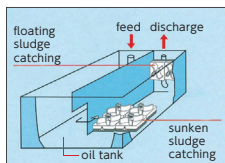
Item No.	Size(mm)		
	L	H	T
SMP1515J	150	150	45
SMP1520J	200		
SMP1525J	250		
SMP1530J	300		
SMP1535J	350		
SMP1540J	400		
SMP1545J	450	200	55
SMP1550J	500		
SMP1560J	600		
SMP2020J	200		
SMP2025J	250		
SMP2030J	300		
SMP2035J	350	200	55
SMP2040J	400		
SMP2045J	450		
SMP2050J	500		
SMP2060J	600		
SMP3030J	300	200	55
SMP3035J	350		
SMP3040J	400		
SMP3045J	450		
SMP3050J	500		
SMP3060J	600		



MGC100

wing bolt
(material : copper)


Set inside oil tank example



Applications

- Purification and cleaning of water or oil tank at hydraulic units or machines (wire cut electric discharge device, machining, etc.)

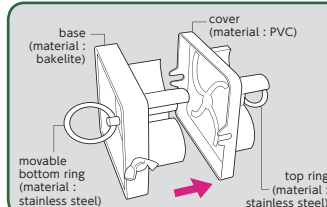
MGC

MAGNETIC SLUDGE STRAINER

Features

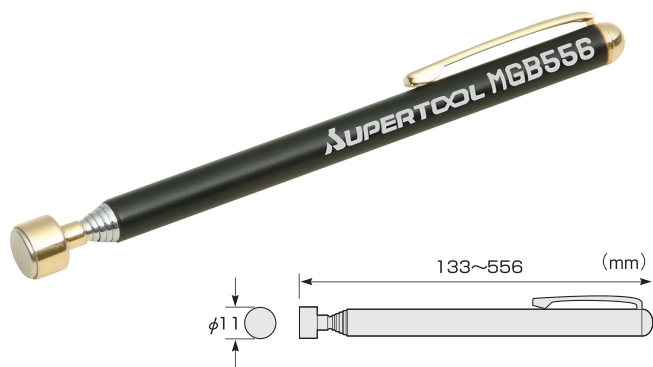
- To set the device, just sink it into the water or oil tank.
- The pinnate-shaped magnets allow to catch more chips or sludge.
- The caught chips or sludge can be easily removed just by taking off the cover.
- Even with the strong magnets, the cover can be easily taken off just by pulling the top and bottom rings.

How to use



- Set the top and bottom rings and the 2 wing bolts.
- Sink the device into the oil tank. It is efficient to set it at the entrance of the filter or in a place where the oil flow quantity is high.
- On a regular basis take out of oil tank, loosen the 2 wing bolts, pull the top and movable down rings and remove the caught sludge.

Item No.	Magnet type	Magnetic flux density	Environment temperature	Size (mm)				N.W. (g)	Base color
				L	H	T	T1		
MGC100	Ferrite	0.12T (1,200G)	≤80℃	110	110	42	20	530	Black
MGC300	Neodymium	0.35T (3,500G)	≤80℃	110	110	42	20	680	Brown



MGB556

MAGNETIC PEN BAR

Features

- Telescopic pencil type.
- The main body in stainless steel is rust-resistant.
- Ultra-light-weight and strong attraction force.
- Plastic case as standard acc.

Applications

- Removal of chips, abrasive powder, fallen matters from narrow spots.
- Ideal in machine assembling and processing factories.

Item No.	Magnet type	Magnetic flux density	Environment temperature	Attraction force(N)	N.W.(g)
MGB556	Neodymium	0.35T (3,500G)	≤80℃	1.5	27

MGB-S

MAGNETIC BAR

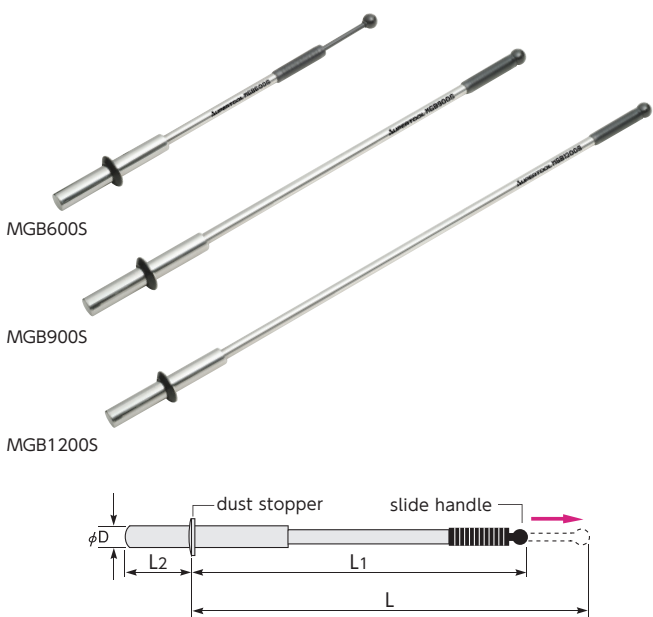
Features

- Strong magnet enabling outstanding attraction force.
- The stick shape is ideal to remove iron scrap or sludge from under a machine or from out of reach narrow spots.
- To dispose of the caught matters, just a single action (pulling the slide handle) is required.

Applications

- Removal of iron scrap or sludge from narrow spots such as machining tool table slots or vise gaps.
- Removal of iron scrap or sludge from water or oil tank.

Example of use



MGB600S

MGB900S

MGB1200S

Item No.	Magnet type	Magnetic flux density	Environment temperature	Attraction force(N)	Main body material	Size (mm)				N.W. (g)
						L	L1	L2	D	
MGB600S	Neodymium	0.35T (3,500G)	≤80℃	170	Stainless steel	650	500	110	32	800
MGB900S						950	800	110	32	1,045
MGB1200S						1,200	1,040	160	32	1,220