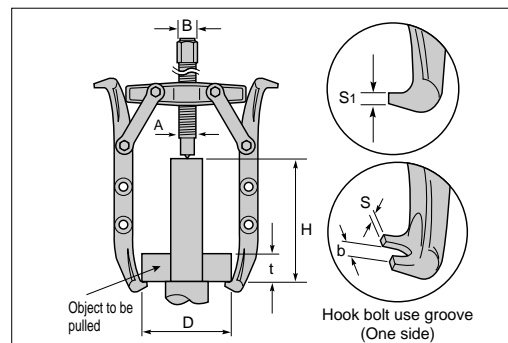
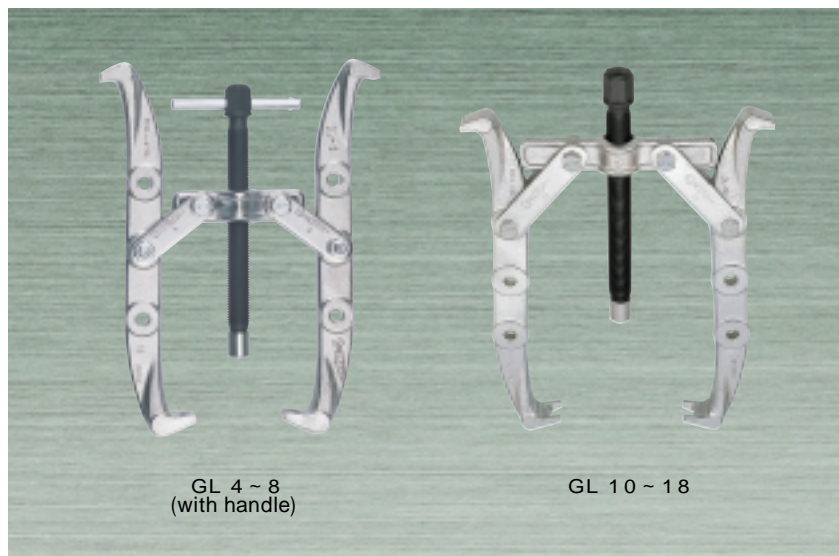


## GEAR PULLER GL TYPE (Professional use heavy duty type)

### GL 4 ~ 18

With the longer claw the reaching range can be expanded more than the G and 3-holes types. The groove width of the claw side is designed for hook bolts.(for BS)



(Unit : mm)

Item No.	D		t	H	b	S <sub>1</sub>	S	B	A	Breaking load (kN)	Weight (kg)	Applicable adaptor	Remarks
	Min.	Max.	When D is Max.										
GL 4	50	100	60	150	10	4.1	5.8	17	14	40	1.0	GA4N	
GL 6	60	150	70	190	12	5.3	6.7	19	18	60	2.3	GA6N	
GL 8	80	200	100	275	16	6.7	7.4	22	22	80	4.4	GA8N	
GL 10	100	250	125	300	18	7.4	8.0	30	28	100	7.0	GA10N	
GL 12	120	300	170	350	20	8.0	8.7	32	32	120	10.0	GA12N	
GL 15	150	375	185	400	24	8.7	9.8	41	38	150	13.0	GA15N	
GL 18	180	450	200	440	27	9.8	10.8	46	44	180	16.0	GA18N	

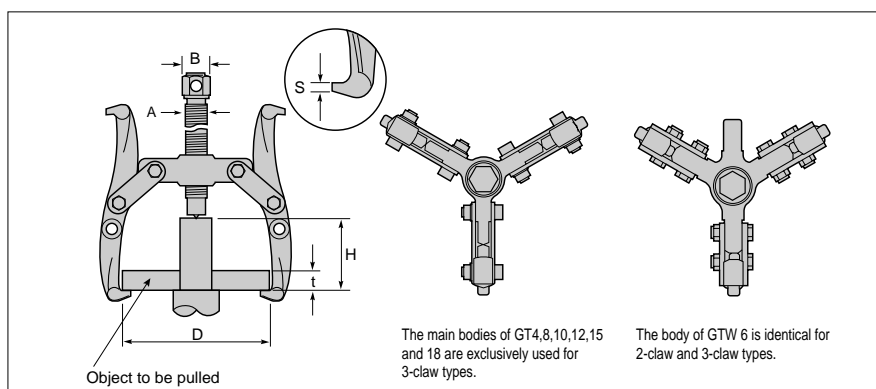
**Accessories** GP Oil (15g) : All sizes • Single-size ratchet wrench with grip: GL10 ~ 28 • Power pusher: G15 ~ 18  
H indicates the dimension when the forcing screw is lifted to the maximum point.

## GEAR PULLER GT TYPE (3-claw puller)

### GT 4 ~ 18

### GTW 6

The setting with the 3-claw type is easier and the loading more stable than 2-claw type.



The main bodies of GT4,8,10,12,15 and 18 are exclusively used for 3-claw types.

The body of GTW 6 is identical for 2-claw and 3-claw types.

(Unit : mm)

Item No.	D		t	H	S	B	A	Hole of the claw	Breaking load (kN)	Weight (kg)	Applicable adaptor	Remarks
	Min.	Max.	When D is Max.									
GT 4	50	100	45	100	4.1	19	18	2	50	1.2	GA4N	
GTW 6	75	175	60	150	5.3	22	22	2	75	3.2	GA6N	
GT 8	80	200	100	240	6.7	30	28	2	100	7.0	GA8N	
GT 10	100	250	120	250	7.4	32	32	2	125	9.5	GA10N	
GT 12	120	300	125	275	8.0	32	32	3	125	14.0	GA12N	
GT 15	150	375	130	320	8.7	41	38	3	150	18.5	GA15N	
GT 18	180	450	140	370	9.8	46	44	3	180	26.0	GA18N	

**Accessories** GP Oil (15g) : All sizes.  
H indicates the dimension when the forcing screw is lifted to the maximum point.