

BEARING SEPARATOR (Professional use heavy duty type)

BS 1~6·BS 1S·2S

Examples of use

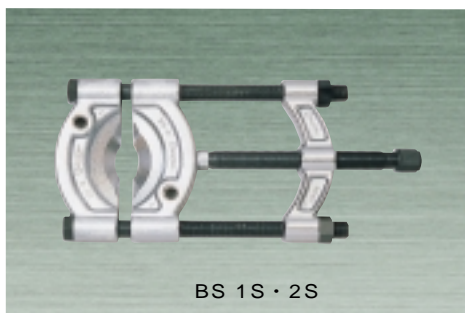


Optimal for removing bearings or gears which do not have any space to insert claws of gear pullers.

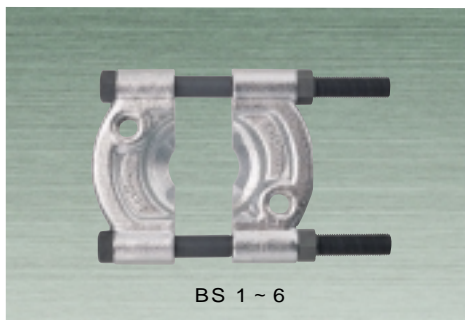
BS 1 ~ 6: For tightening the nuts of both forcing screws alternately.

BS 1S ~ 2S: For tightening only the forcing screw of the speeder.

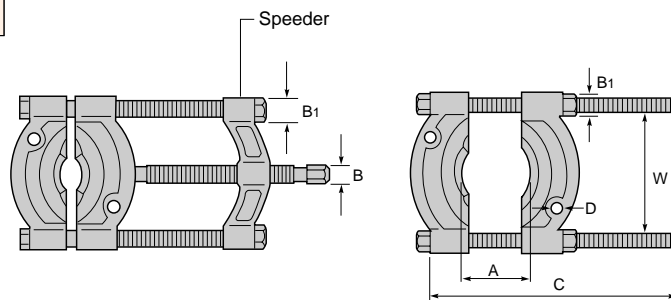
The use of the bearing separator enables easy clamping for large pulley circumferences.



BS 1S · 2S



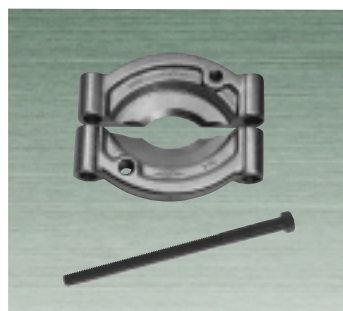
BS 1 ~ 6



(Unit : mm)

Item No.	A		W	C	D	B	B1	Breaking load (K·N)	Weight (kg)	Applicable puller		Applicable adaptor	Remarks
	Minimum	Maximum								Gear puller	Push puller		
BS 1	6	60	60	120	M10	14	14	60	0.5	GL 4	PP 2		
BS 1S	6	60	60	150	M10	17	14	60	0.9	GL 4	PP 2	GA 4N	
BS 2	9	115	110	205	M12	22	22	100	2.3	GL 6	PP 2		
BS 2S	9	115	110	245	M12	19	22	100	3.5	GL 6	PP 2	GA 4N	
BS 4	25	230	155	330	M16		27	200	5.0	GL 8 · 10	PP 4		
BS 5	25	260	185	380	M20		30	250	7.0	GL 12	PP 6		
BS 6	25	310	260	485	M24		41	350	18.0	GL 15	PP 6		

PARTS for Bearing separator



BSB 1~6

BSN 1~6

Body (One piece)

Item No.	Remarks
BSB 1	
BSB 2	
BSB 4	
BSB 5	
BSB 6	

Bolt (One piece)

Item No.	Remarks
BSN 1	
BSN 2	
BSN 4	
BSN 5	
BSN 6	



BHN 1~6

Hook bolt (One piece)

Item No.	Remarks
BHN 1	
BHN 2	
BHN 4	
BHN 5	
BHN 6	

BSR 1·2

BSN 1S·2S

Tip of screw with adaptor reduces friction resistance.

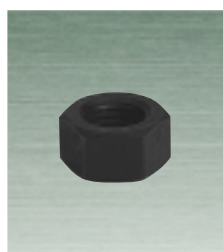
Speeder

Item No.	Remarks
BSR 1	
BSR 2	



Bolt for BS with speeder (One piece)

Item No.	Remarks
BSN 1S	
BSN 2S	



BSU 1~6

Hexagonal nut (One piece)

Item No.	Remarks
BSU 1	
BSU 2	
BSU 4	
BSU 5	
BSU 6	