

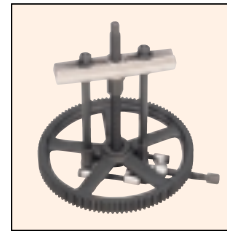
BEARING PUSH PULLER SET (Professional use heavy duty type)



P1000 ~ 6000

Optimal puller set for removing and inserting bearings, gears and pulleys in deep places.
Steel case supplied.

Examples of use



(Unit : mm)

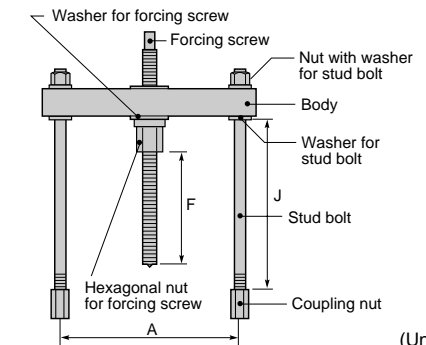
Item No.	Push puller	Adaptor for forcing screw	Bearing separator	Ring adaptor	Coupling nut	Stud bolt	Ratchet wrench with grip	Breaking load (kN)	Weight (kg)	Remarks
P 1000	PP 2(1pce.)	PPN 2(1pce.)	BS 1S(1pce.)	PPA 1(2pcs.)	PCU 2(2pce.)	PSN 2125(2pcs.)	RNG 14 x 17(1pce.)	60	7	
P 2000	PP 2(1pce.)	PPN 2(1pce.)	BS 2S(1pce.)		PCU 2(2pce.)	PSN 2125(2pcs.)	RNG 19 x 22(1pce.)	100	11	
P 4000	PP 4(1pce.)	PPN 4(1pce.)	BS 4(1pce.)		PCU 4(4pce.)	PSN 4115(2pcs.) PSN 4420(2pcs.)	RHG 27 (1pce.)	200	22	
P 5000	PP 6(1pce.)	PPN 6(1pce.)	BS 5(1pce.)	PPA 5(2pcs.)	PCU 6(4pce.)	PSN 6205(2pcs.) PSN 6715(2pcs.)	RHG 30 (1pce.)	250	58	
P 6000	PP 6(1pce.)	PPN 6(1pce.)	BS 6(1pce.)		PCU 6(4pce.)	PSN 6205(2pcs.) PSN 6715(2pcs.)	RHG 41 (1pce.)	350	70	

PUSH PULLER



PP 2 ~ 6

Existing bearing separators equipped with this push puller enhance workability.



(Unit : mm)

Item No.	A		J	F Maximum	Breaking load(kN)	Set weight (kg)	Remarks
	Minimum	Maximum					
PP 2	65	200	150	223	100	2.7	
PP 4	90	330	245	233	200	7.0	
PP 6	125	465	460	287	350	21.0	

PARTS for Push puller



PPB 2 ~ 6

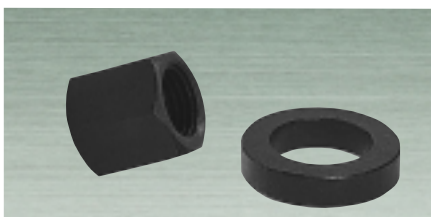
Body

Item No.	Remarks
PPB 2	
PPB 4	
PPB 6	

PPS 2 ~ 6

Forcing screw

Item No.	Remarks
PPS 2	
PPS 4	
PPS 6	



PPU 2 ~ 6

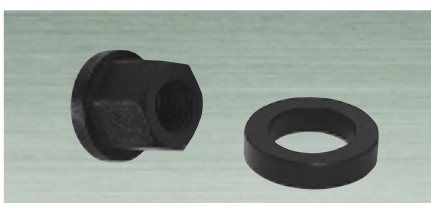
Hexagonal nut for forcing screw

Item No.	Remarks
PPU 2	
PPU 4	
PPU 6	

PPZ 2 ~ 6

Washer for forcing screw

Item No.	Remarks
PPZ 2	
PPZ 4	
PPZ 6	



PSU 2 ~ 6

Nut with washer for stud bolt

Item No.	Remarks
PSU 2	
PSU 4	
PSU 6	

PSZ 2 ~ 6

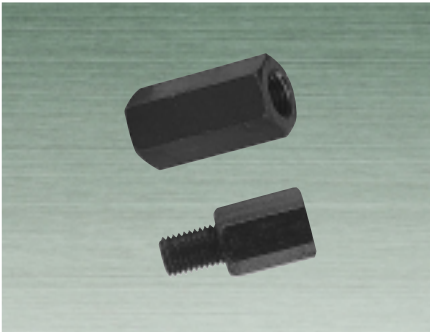
Washer for stud bolt

Item No.	Remarks
PSZ 2	
PSZ 4	
PSZ 6	



PARTS for Push puller

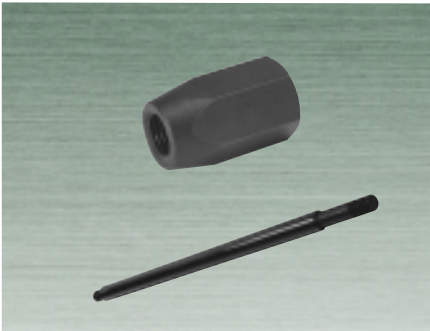
GEAR PULLERS



PCU 2~6
PPA 1·5

Coupling nut	
Item No.	Remarks
PCU 2	
PCU 4	
PCU 6	

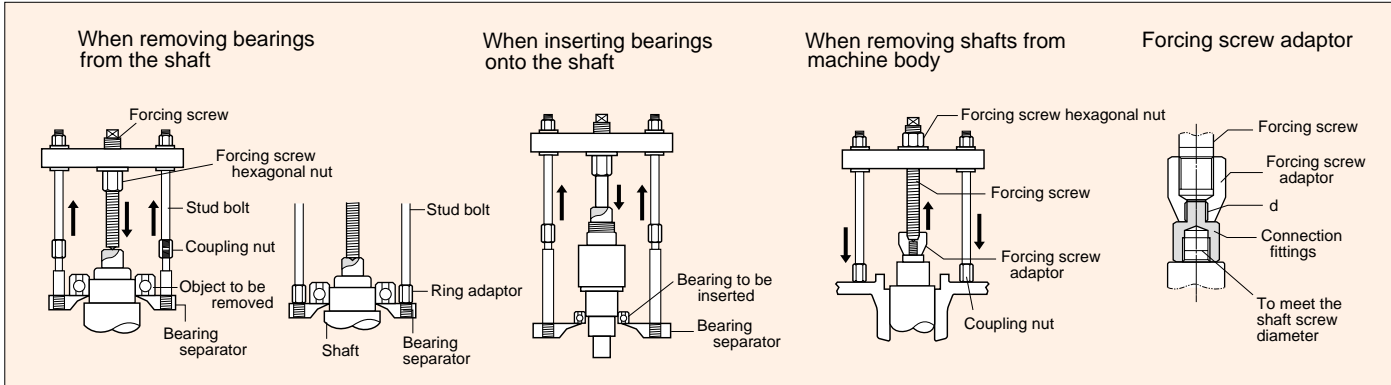
Ring adaptor		
Item No.	Applicable Bearing separator	Remarks
PPA 1	For BS 1·1S	
PPA 5	For BS 5	



PPN 2~6
PSN 2125~6715

Adaptor for forcing screw	
Item No.	Remarks
PPN 2	
PPN 4	
PPN 6	

Stud bolt (One piece) (Unit : mm)		
Item No.	Screw diameter x length	Remarks
PSN 2125	M12 x 125	
PSN 2150	M12 x 150	
PSN 4115	M16 x 115	
PSN 4245	M16 x 245	
PSN 4420	M16 x 420	
PSN 6205	M24 x 205	
PSN 6460	M24 x 460	
PSN 6715	M24 x 715	



As shown in the drawing, set and fix the forcing screw hexagonal nut with a spanner and tighten the square part of the forcing screw. In case the bearing is in a deep place as shown in the drawing, join the stud bolt with a coupling.

For P-1000 and P-5000, the hole diameter of separator screw is different from the external diameter of stud bolt screw.

Before use, screw the ring adaptor into the stud bolt.

Set as shown in the drawing. Follow operation as detailed in .

Set as shown in the drawing, fix the square part of the forcing screw with a spanner and tighten the forcing screw hexagonal nut.

The forcing screw adaptor is processed as shown in the following table. If the diameters of the forcing screw and shaft do not match, make the connection fittings separately.

Adaptor for forcing screw diameter

Item No.	PPN-2	PPN-4	PPN-6
Diameter at the forcing screw side (30° trapezoid screw)	TM20 x 2.5	TM28 x 3.0	TM38 x 3.5
Diameter at the connection side (Metric standard screw)	M16	M20	M24