

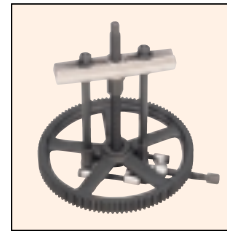
BEARING PUSH PULLER SET (Professional use heavy duty type)



P1000 ~ 6000

Optimal puller set for removing and inserting bearings, gears and pulleys in deep places.
Steel case supplied.

Examples of use



(Unit : mm)

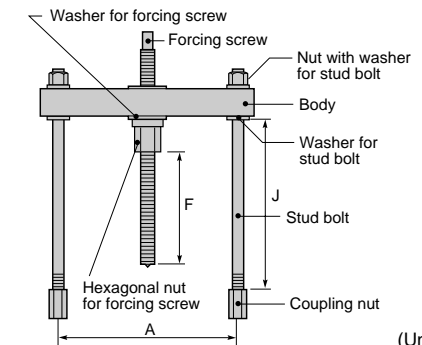
Item No.	Push puller	Adaptor for forcing screw	Bearing separator	Ring adaptor	Coupling nut	Stud bolt	Ratchet wrench with grip	Breaking load (kN)	Weight (kg)	Remarks
P 1000	PP 2(1pce.)	PPN 2(1pce.)	BS 1S(1pce.)	PPA 1(2pcs.)	PCU 2(2pce.)	PSN 2125(2pcs.)	RNG 14 x 17(1pce.)	60	7	
P 2000	PP 2(1pce.)	PPN 2(1pce.)	BS 2S(1pce.)		PCU 2(2pce.)	PSN 2125(2pcs.)	RNG 19 x 22(1pce.)	100	11	
P 4000	PP 4(1pce.)	PPN 4(1pce.)	BS 4(1pce.)		PCU 4(4pce.)	PSN 4115(2pcs.) PSN 4420(2pcs.)	RHG 27 (1pce.)	200	22	
P 5000	PP 6(1pce.)	PPN 6(1pce.)	BS 5(1pce.)	PPA 5(2pcs.)	PCU 6(4pce.)	PSN 6205(2pcs.) PSN 6715(2pcs.)	RHG 30 (1pce.)	250	58	
P 6000	PP 6(1pce.)	PPN 6(1pce.)	BS 6(1pce.)		PCU 6(4pce.)	PSN 6205(2pcs.) PSN 6715(2pcs.)	RHG 41 (1pce.)	350	70	

PUSH PULLER



PP 2 ~ 6

Existing bearing separators equipped with this push puller enhance workability.



(Unit : mm)

Item No.	A		J	F Maximum	Breaking load(kN)	Set weight (kg)	Remarks
	Minimum	Maximum					
PP 2	65	200	150	223	100	2.7	
PP 4	90	330	245	233	200	7.0	
PP 6	125	465	460	287	350	21.0	

PARTS for Push puller



PPB 2 ~ 6

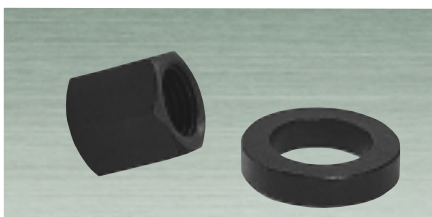
Body

Item No.	Remarks
PPB 2	
PPB 4	
PPB 6	

PPS 2 ~ 6

Forcing screw

Item No.	Remarks
PPS 2	
PPS 4	
PPS 6	



PPU 2 ~ 6

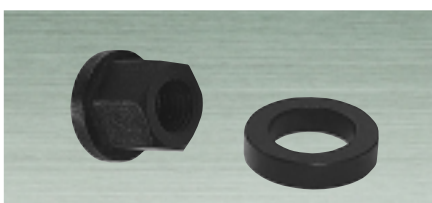
Hexagonal nut for forcing screw

Item No.	Remarks
PPU 2	
PPU 4	
PPU 6	

PPZ 2 ~ 6

Washer for forcing screw

Item No.	Remarks
PPZ 2	
PPZ 4	
PPZ 6	



PSU 2 ~ 6

Nut with washer for stud bolt

Item No.	Remarks
PSU 2	
PSU 4	
PSU 6	

PSZ 2 ~ 6

Washer for stud bolt

Item No.	Remarks
PSZ 2	
PSZ 4	
PSZ 6	