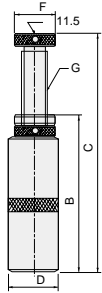




SCREW SUPPORT (with Round nut)



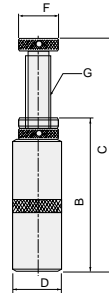
Please use support chip in working for up-down surface and different shaped. In case of using by accumulating support, you must use the joint cap.

A pair

(Unit:mm)

Item No.	Stroke B~C	D	F	G	Allowable load kN	Weight (kg) (A pair)
FS 50S	37~50	40	35	Tr20 x 3	80	0.56
FS 70S	50~70	40	35	Tr20 x 3	80	0.78
FS100S	70~100	45	40	Tr20 x 3	80	1.47
FS150S	100~150	50	45	Tr25 x 4	150	2.65
FS250S	150~250	60	50	Tr32 x 5	200	5.64
FS300S	200~300	60	50	Tr32 x 5	200	7.17

SCREW SUPPORT for Big machine



It is convenient to work for clamping with big and tall work.

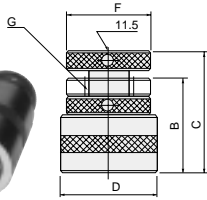
(Unit:mm)

Item No.	Stroke B~C	D	F	G	Allowable load kN	Weight (kg)
FS 400T	300~400	70	60	M36 x 4	300	6.1
FS 500T	400~500	70	60	M36 x 4	300	6.8
FS 600T	500~600	70	60	M36 x 4	300	8.6
FS 700T	600~700	70	60	M36 x 4	300	9.7
FS 800T	700~800	70	60	M36 x 4	300	10.5

MAGNETIC SCREW SUPPORT (with Round nut)



A pair

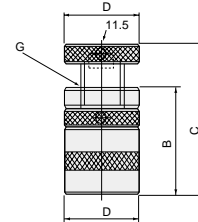


Meet with wide and warp knuring tools. Because magnetic power is stayed at the bottom of the body, powder of cutting never attach on there. Please use support chip for working of up-down surface and different shaped.

(Unit:mm)

Item No.	Stroke B~C	D	F	G	Allowable load kN	Weight (kg) (A pair)
MSS 50	40~50	45	35	Tr18 x 2	80	0.72
MSS 65	50~65	45	35	Tr18 x 2	80	0.95
MSS 85	65~85	45	35	Tr20 x 3	80	1.25
MSS 110	85~110	45	40	Tr25 x 4	150	1.65
MSS 165	110~165	50	45	Tr25 x 4	150	2.73
MSS 265	165~265	60	50	Tr32 x 5	200	6.10

SCREW JACK for Pressing machine



The receiving flat head (D) is made larger for pressing machine. (FS70P is not attached with lock nuts.)

(Unit:mm)

Item No.	Stroke B~C	D	G	Allowable load kN	Weight (kg)
FS 70P	50~70	60	M40 x 4	400	0.97
FS 100P	70~100	60	M40 x 4	400	1.40
FS 150P	100~150	70	M44 x 4	600	2.75
FS 200P	150~200	80	M52 x 4	800	5.20

SCREW SUPPORT CHIP

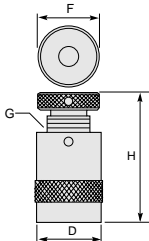


SST 1 SST 10 SST 2 SST 20 SST 3 SST 30 SST 4 SST 40 SST 5 SST 50 SST 6 SST 60 SST 7

(Unit:mm)

Item No.	Applicable support	External diameters	Weight (kg)
SST 1~6	FS50S~FS100S·MSS50~MSS110	25	250
SST 7			
SST 10~60	FS150S~FS300S·MSS165~MSS265	30	460

SCREW SUPPORT Plain type

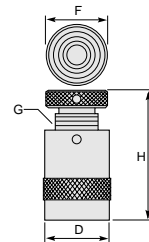


The low friction contact face obtained by setting the steel ball on the deck allows for low force smooth adjustment.

(Unit:mm)

Item No.	H Stroke	D	F	G	Allowable load kN	Weight (kg)
FS 30	30~40	40	40	TM25 x 3	40	0.25
FS 40	40~50	49	49	TM32 x 3	60	0.47
FS 50	50~62				80	0.65
FS 60	60~78				100	0.73
FS 80	80~105	63	63	TM40 x 4	160	1.60
FS 90	90~125				180	1.80
FS100	100~145				190	1.90
FS130	130~200				260	2.60
FS160	160~260				320	3.20

SCREW SUPPORT Hatched type



The surface of the deck is finished with deep-grooved spirals

(Unit:mm)

Item No.	H Stroke	D	F	G	Allowable load kN	Weight (kg)
FK 30	30~40	40	40	TM25 x 3	40	0.25
FK 40	40~50	49	49	TM32 x 3	60	0.47
FK 50	50~62				80	0.65
FK 60	60~78				100	0.73
FK 80	80~105	63	63	TM40 x 4	160	1.60
FK100	100~145				190	1.90
FK130	130~200				268	2.68
FK160	160~260				328	3.28