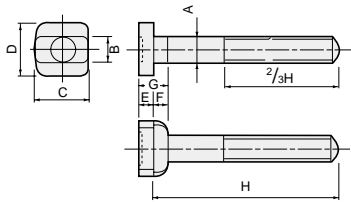


T-SLOTTED BOLT



(Unit:mm)

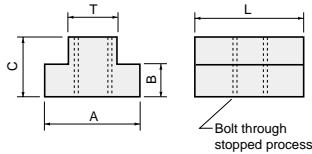
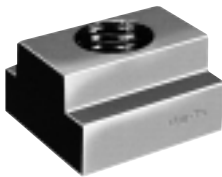
Item No.	T-Slotted	Screw diameter	A	B	C	D	E	F	G	H	Weight (g)	Remarks
TBM 1250	12	M 12 P=1.75	12	12	26	22	7	6	13	50	72	
1275	12		12	12	26	22	7	6	13	75	90	
12100	12		12	12	26	22	7	6	13	100	100	
12125	12		12	12	26	22	7	6	13	125	126	
12150	12		12	12	26	22	7	6	13	150	142	
12175	12		12	12	26	22	7	6	13	175	160	
12200	12		12	12	26	22	7	6	13	200	180	
TBM 1650	16	M 16 P=2.0	16	16	32	27	8	8	16	50	128	
1675	16		16	16	32	27	8	8	16	75	160	
16100	16		16	16	32	27	8	8	16	100	192	
16125	16		16	16	32	27	8	8	16	125	226	
16150	16		16	16	32	27	8	8	16	150	260	
16175	16		16	16	32	27	8	8	16	175	294	
16200	16		16	16	32	27	8	8	16	200	328	

It is special bolt made by forging precisely with the best selected carbon material.

(Unit:mm)

Item No.	T-Slotted	Screw diameter	A	B	C	D	E	F	G	H	Weight (g)	Remarks	
TBM 1875	18	M 18 P=2.5	18	18	40	30	11	11	22	75	248		
18100	18		18	18	40	30	11	11	22	100	294		
18125	18		18	18	40	30	11	11	22	125	332		
18150	18		18	18	40	30	11	11	22	150	374		
18175	18		18	18	40	30	11	11	22	175	412		
18200	18		18	18	40	30	11	11	22	200	458		
TBM 2075	20		M 20 P=2.5	20	20	40	34	11	11	22	75	278	
20100	20	20		20	40	34	11	11	22	100	342		
20125	20	20		20	40	34	11	11	22	125	388		
20150	20	20		20	40	34	11	11	22	150	442		
20175	20	20		20	40	34	11	11	22	175	490		
20200	20	20		20	40	34	11	11	22	200	542		
TBM 22100	22	M 22 P=2.5		22	22	40	38	14	13	27	100	444	
22125	22		22	22	40	38	14	13	27	125	506		
22150	22		22	22	40	38	14	13	27	150	576		
22175	22		22	22	40	38	14	13	27	175	642		
22200	22		22	22	40	38	14	13	27	200	698		
TBM 24100	24		M 24 P=3.0	24	24	50	44	16	15	31	100	616	
24125	24			24	24	50	44	16	15	31	125	688	
24150	24	24		24	50	44	16	15	31	150	766		
24175	24	24		24	50	44	16	15	31	175	844		
24200	24	24		24	50	44	16	15	31	200	922		

T-SLOTTED NUT



(Unit:mm)

Item No.	T-Slotted	Screw diameter	A	B	C	T	L	Weight (g)	Remarks
1008TN	10	M 8	16.0	6.0	12.0	9.8	23	22	
1210TN	12	M 10	18.0	7.0	14.0	11.7	23	29	
1410TN	14	M 10	22.3	8.8	15.9	13.8	28	54	
1412TN		M 12	22.3	8.8	15.9	13.8	28	50	
1612TN	16	M 12	25.5	8.8	15.9	15.9	28	61	
1614TN		M 14	25.5	8.8	15.9	15.9	28	57	
1814TN	18	M 14	28.6	11.1	19.1	17.6	30	85	
1816TN		M 16	28.6	11.1	19.1	17.6	30	79	
2016TN	20	M 16	31.8	11.8	19.1	19.1	30	92	
2018TN		M 18	31.8	14.1	25.5	19.8	38	155	

(Unit:mm)

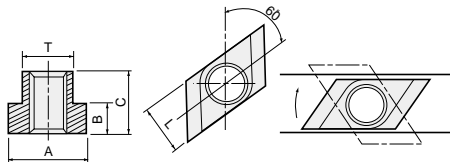
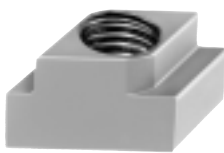
Item No.	T-Slotted	Screw diameter	A	B	C	T	L	Weight (g)	Remarks
2216TN	22	M 16	36.1	14.1	25.5	21.8	38	187	
2218TN		M 18	36.1	14.1	25.5	21.8	38	179	
2220TN		M 20	36.1	14.1	25.5	21.8	38	167	
2418TN	24	M 18	38.3	14.1	25.1	23.6	38	192	
2420TN		M 20	38.3	14.1	25.1	23.6	38	181	
2620TN	26	M 20	41.3	16.1	25.5	24.8	44	250	
2622TN		M 22	41.3	16.1	25.5	24.8	44	237	
2822TN	28	M 22	41.3	17.4	28.5	26.8	50	318	
2824TN		M 24	41.3	17.4	28.6	26.8	50	305	
3630TN	36	M 30	50	22.2	44	35.6	60	688	

Inch size

(Unit:mm)

Item No.	T-Slotted	Screw diameter	A	B	C	T	L	Weight (g)	Remarks
562TN	9/16	W 1/2	22.3	8.8	15.9	13.8	28	60	
687TN	11/16	W 5/8	28.6	11.1	19.1	17.6	30	86	
875TN	7/8	W 3/4	36.1	14.1	25.5	21.8	38	178	

ROTARY T-SLOTTED NUT

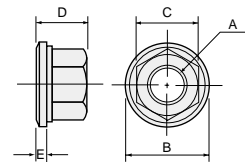


This nut can be set from the top of T-groove without disturbing the setting of the stud bolt.

(Unit:mm)

Item No.	T-Slotted	Screw diameter	A	B	C	T	L	Weight (g)	Remarks
1208RTN	12	M 8	17.5	5.5	12.7	10.8	11.5	14	
1410RTN	14	M10	22.2	8.7	15.8	13.8	13.5	25	
1612RTN	16	M12	25.4	8.7	15.8	15.8	15.5	33	
1614RTN		M14	25.4	8.7	15.8	15.8	15.5	28	
1814RTN	18	M14	28.5	11.1	19.0	17.5	17.5	50	
1816RTN		M16	28.5	11.1	19.0	17.5	17.5	43	
2016RTN	20	M16	31.7	11.9	19.0	19.0	19.5	62	
2218RTN	22	M18	36	13.8	25.4	21.7	21.5	97	
2220RTN		M20	36	13.8	25.4	21.7	21.5	87	
2418RTN	24	M18	38.2	14.0	25.4	23.5	23.5	123	
2420RTN		M20	38.2	14.0	25.4	23.5	23.5	113	
2622RTN	26	M22	41.3	15.8	25.4	24.7	25.5	134	
2824RTN	28	M24	41.3	17.5	28.5	26.9	27.5	163	

FLANGED NUT



(Unit:mm)

Item No.	A	B	C	D	E	Weight (g)	Remarks
8MFN	M8	19	13	12	3	10	
10MFN	M10	22	17	13	3	21	
12MFN	M12	28	19	17	4	35	
14MFN	M14	28	22	17	4	41	
16MFN	M16	33	24	20	5	60	
18MFN	M18	35	27	20	5	71	
20MFN	M20	40	30	25	6	112	
22MFN	M22	45	32	28	6	147	
24MFN	M24	47	36	28	6	176	
30MFN	M30	56	46	30	6	307	
Inch size							
12FN	W 1/2	28.6	22	17.5	4.0	49	
58FN	W 5/8	32.9	27	20.6	4.8	81	
34FN	W 3/4	41.3	32	25.4	6.4	144	