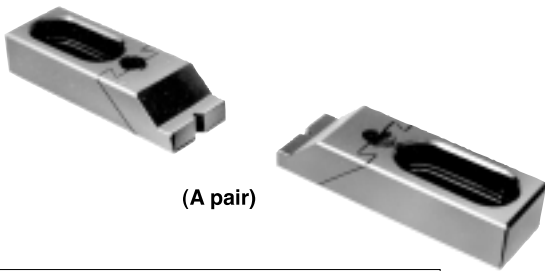


SLIDE CLAMP (A-type)



(A pair)

Difference :
Drive and screw in squeezing steers stay inside the jaw of the edge.

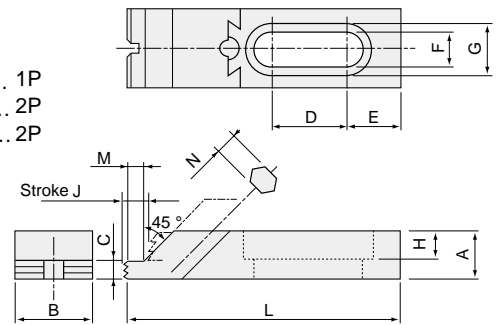


The clamp body included is finished by heat, so very durable.
The edge of jaw is cut, and you push down work to clamp.

Steering way is to push into wrench and screw up, then clamp head is slid by 45 degree to clamp work.

Accessories

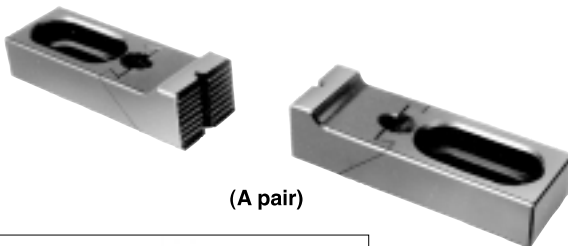
- Hexagonal key wrench..... 1P
- Cap screw 2P
- T-slotted nut..... 2P



(Unit : mm)

Item No.	Squeeze capacity	Applicable bolt	A	B	C	D	E	F	G	H	J	L	M	N	Weight (kg) (A pair)	Remarks
TC 1A	7	M12	22	36	9	28	16	14.5	22	12	11	103	8	6	1.00	
TC 2A	8	M16	22	36	9	47	28.5	16.5	25	12	11	143	9	6	1.54	
TC 3A	10	M20	24	46	12	60	35.5	20.5	31	14	12	180	10	8	2.88	

SLIDE CLAMP (B-type)



(A pair)

Never broken due to very strong.
Capability enough.

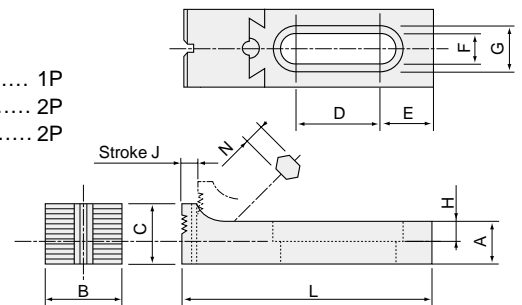


Please use in case that the height of work is too low in slide type A and too high in free vise(FV)

Structure and ability are meeting with slide clamp.(A-Type)

Accessories

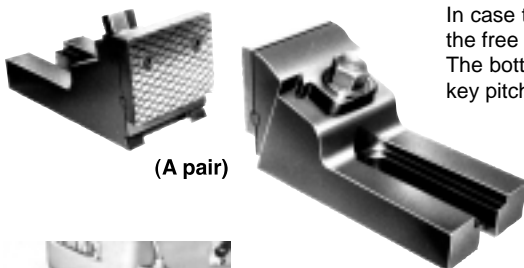
- Hexagonal key wrench..... 1P
- Cap screw 2P
- T-slotted nut..... 2P



(Unit : mm)

Item No.	Squeeze capacity kN	Applicable bolt	A	B	C	D	E	F	G	H	J	L	N	Weight (kg) (A pair)	Remarks
TC 1B	7	M12	22	36	27	28	16	14.5	22	12	11	103	6	1.18	
TC 2B	8	M16	22	36	30	47	28.5	16.5	25	12	11	143	6	1.67	
TC 3B	10	M20	24	46	36	60	35.5	20.5	31	14	12	180	8	3.14	

FREE VISE



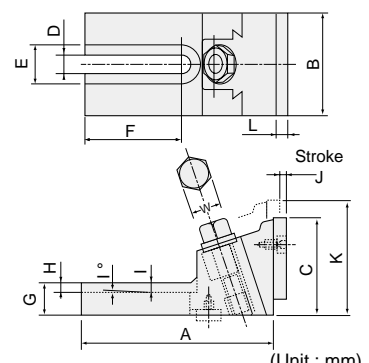
(A pair)

In case that work is too big to fix due to vise, please use the free vise.

The bottom of body can be used by step key to finish by key pitch.

Accessories

- Round space mouth piece (FVJ)..... A pair
- Frenge nut (SFN) 4P
- T-slotted bolt (TBM)..... 4P
- Stepped key (FKY)..... 2P
- Cap screw 2P



(Unit : mm)

Item No.	Squeeze capacity kN	Applicable bolt	Applicable key	A	B	C	D	E	F	G	H	I	J	K	L	W	Weight (kg) (A pair)	Remarks
FV350	23	M12	FKY16	126	70	70	14.5	29	55	25	6	4.5	5	82	10	19	6.8	
FV450	28	M16	FKY18	180	85	85	17	36	92	30	8	6	5	98	12	24	13.0	
FV550	38	M20	FKY20	190	110	105	21	42	89.5	36	10	8	7	125	13	30	21.0	