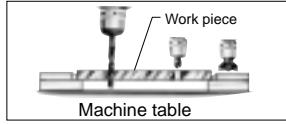


## PARALLEL TOE CLAMP

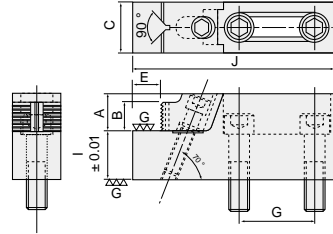
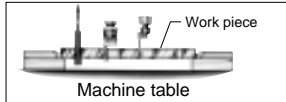


Hook-type clamp with parallel base.  
You can clamp while keeping the height of work.  
You can do the both way of a head process and a tail process.

Head process



Tail process



2 pcs of setting bolts are not included

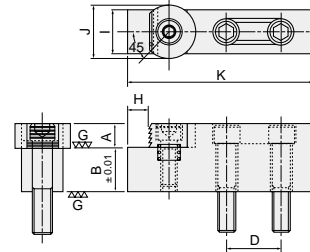
(Unit : mm)

Item No.	Squeeze capacity kN	Stroke	Cap screw	A	B	C	E	G	I	J	Weight (kg)
TC 30	10	4	M12 x 55	22.5	15	30	15	50	30	135	1.10
TC 40	12	6	M16 x 65	31.5	24	40	25	63	40	170	2.52
TC 50	14	8	M16 x 70	34.5	27	46	25	63	50	175	3.80

## PARALLEL WORK STOPPER



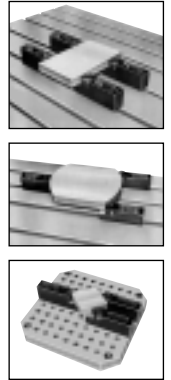
The head is rotating freely to clamp work in any type.  
You can use parallel to clamp at the same time.



2 pcs of setting bolts are not included

(Unit : mm)

Item No.	Cap screw	A	B	D	H	I	J	K	Weight (kg)
TC 30S	M12 x 55	15	30	50	15	30	36	135	1.04
TC 40S	M16 x 65	24	40	63	25	40	48	170	2.45
TC 50S	M16 x 70	27	50	63	25	46	54	180	3.79

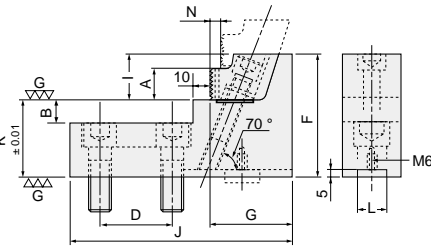
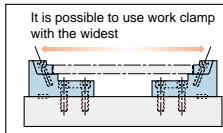


## REVERSE CLAMP



Hook-type clamp with parallel base.  
The most work clamp inside the table is possible.  
You can clamp to keep the height of work.  
You can make the both process.

Example of use



2 pcs of setting bolts are not included

(Unit : mm)

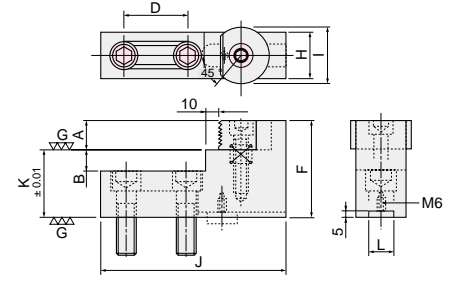
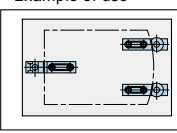
Item No.	Squeeze capacity kN	Stroke N	Cap screw	A	B	D	F	G	H	I	J	K <sup>±0.01</sup>	L <sup>HB</sup>	Weight (kg)
RTC 45	10	4	M12	15	16	50	67.5	49	30	22.5	135	45	18	1.05
RTC 55	12	6	M16	24	17	50	86.5	60	40	31.5	155	55	20	2.26
RTC 65	14	8	M16	27	20	50	99.5	65	46	34.5	165	65	20	3.16

## REVERSE WORK STOPPER



The head is rotating freely, so to be able to clamp any shaped of work.  
With reverse clamp, the most work clamp inside the table is possible.

Example of use



2 pcs of setting bolts are not included

(Unit : mm)

Item No.	Cap screw	A	B	D	F	H	I	J	K	L <sup>HB</sup>	Weight (kg)
RTC 45S	M12	15	16	50	60	30	36	125	45	18	0.95
RTC 55S	M16	24	17	50	79	40	48	150	55	20	2.09
RTC 65S	M16	27	20	50	92	46	54	160	65	20	2.97

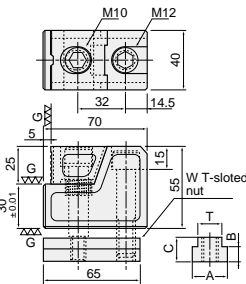
## MECHALOCK CLAMP

### Standard Type



We can use efficiently the space of jig block and machine table by the compact design.

We can clamp while keeping work.



(Unit : mm)

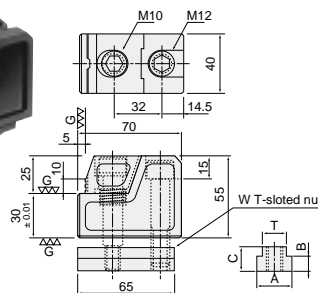
Item No.	T-Slotted	Stroke	A	B	C	T	Weight (kg)
MLC100AN	14	2.8	22.2	8.7	15.8	13.8	0.98
MLC100BN	16		25.4	8.7	15.8	15.8	1.03
MLC100CN	18		28.5	11.1	19	17.5	1.08

Squeeze capacity 7kN

### Low Type



Very useful for thinner work.



(Unit : mm)

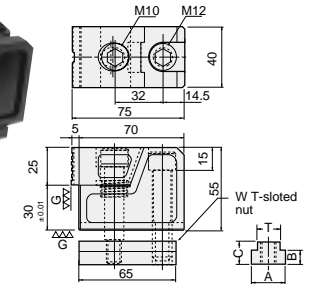
Item No.	T-Slotted	Stroke	A	B	C	T	Weight (kg)
MLC200AN	14	2.8	22.2	8.7	15.8	13.8	0.97
MLC200BN	16		25.4	8.7	15.8	15.8	1.02
MLC200CN	18		28.5	11.1	19	17.5	1.07

Squeeze capacity 7kN

### Long Type



We can use differently the space of jig block and machine table by the compact design



(Unit : mm)

Item No.	T-Slotted	Stroke	A	B	C	T	Weight (kg)
MLC300AN	14	2.8	22.2	8.7	15.8	13.8	1.05
MLC300BN	16		25.4	8.7	15.8	15.8	1.10
MLC300CN	18		28.5	11.1	19	17.5	1.05

Squeeze capacity 7kN