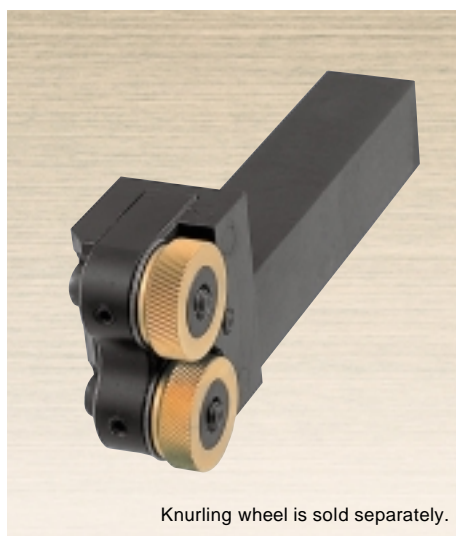


ROLL KNURLING HOLDER E-MODEL

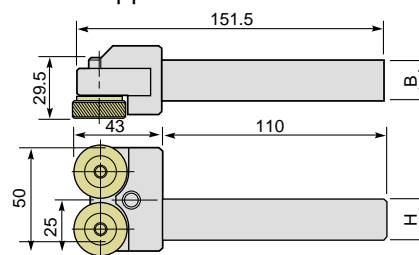
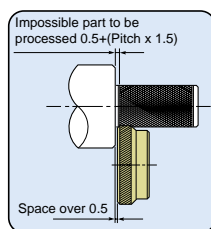


Knurling wheel is sold separately.

KH 2E20·25

For processing end : cross cut

Possible to be processed up to the end of stepped work.



(Unit:mm)

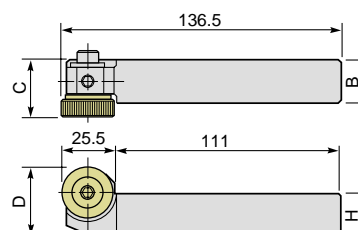
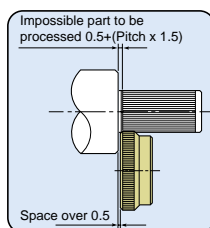
Item No.	H	B	Knurling range	Weight (g)	Applicable knurling wheel	Remarks
KH 2E20	20	20	10 ~ 250	720	KNE 15RL ~ 06RL	
KH 2E25	25	25		910		



Knurling wheel is sold separately.

KH 1E20·25

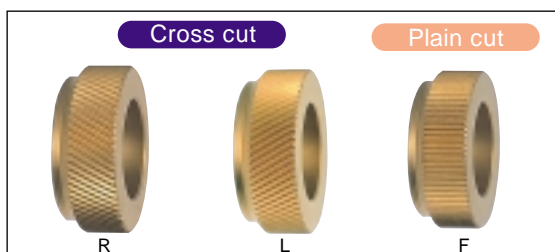
For processing end : plain cut



(Unit:mm)

Item No.	C	D	H	B	Knurling range	Weight (g)	Applicable knurling wheel
KH 1E20	27.5	32.5	20	20	10 ~ 250	430	KNE 15F ~ 06F
KH 1E25	30	37.5	25	25		630	

ROLL KNURLING WHEEL

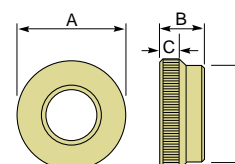


KNE

End processing wheel

TiN(titanium nitride) enables a longer life to be economical .

(material SKH-51)



(Unit:mm)

Item No.		Knurls	No. of knurl per inch	Pitch	Module	A	B	C	D	Remarks
Cross cut (a pair)	Plain cut									
KNE 15RL	KNE 15F	Coarse	17	1.5	0.48	25.4	10	6	22	
KNE 12RL	KNE 12F									
KNE 10RL	KNE 10F	Medium	26	1.0	0.32					
KNE 08RL	KNE 08F									
KNE 06RL	KNE 06F	Fine	42	0.6	0.19					