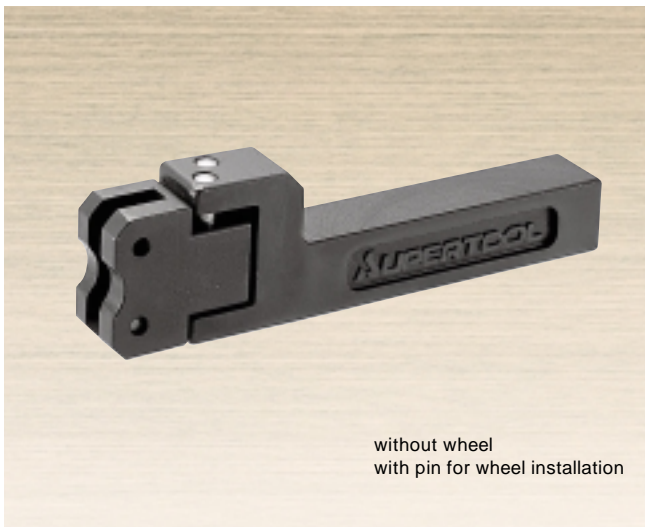




## ROLL AUTO-SLIDING KNURLING HOLDER



without wheel  
with pin for wheel installation

### KHS

For domestic standard knurling wheel : cross cut

#### FEATURES

Easy installation

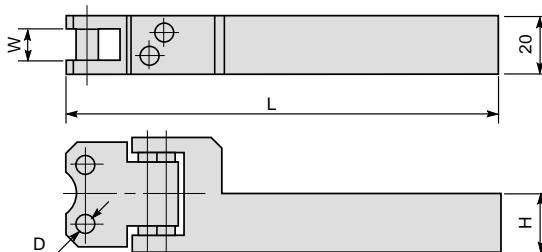
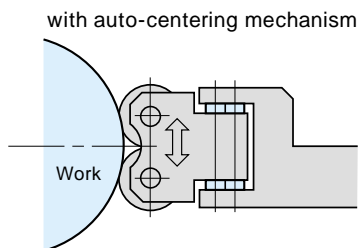
Original positioning mechanism is provided in the supporting part of the knurling wheel. The clear original position enables a easy installation to Auto and NC lathe.

No-need for accurate positioning

The tolerance of center is adjustable with the auto-sliding mechanism. The centering range is within +/- 2.5mm to the center position.

Fine finish

Up and down movement of the knurling wheel supporting part for auto-sliding knurling holder reduces the difference of rolling power between knurling wheels and enables an even knurling processed depth.

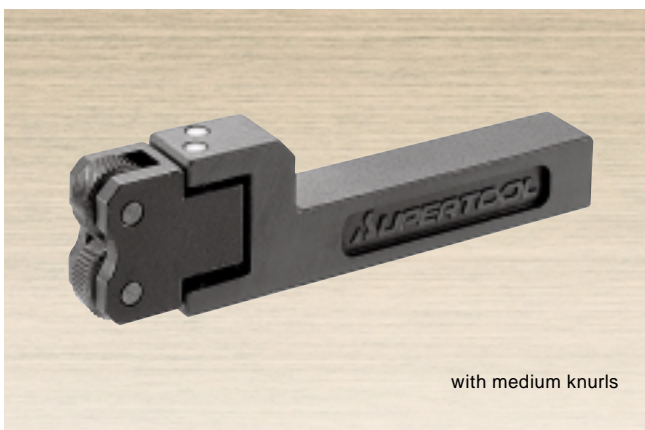


(Unit:mm)

Item No.	W	D	H	L	Knurling range	Weight (g)	Applicable knurling wheel	Remarks
KHS	6.5	4.7	20	147	10 ~ 250	550	KNS RL14 ~ 50	

KNURLING HOLDER

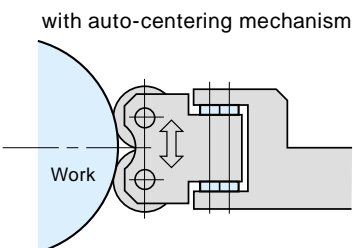
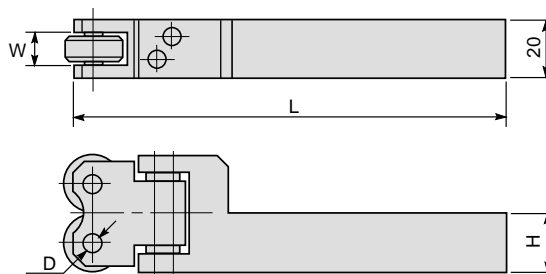
## ROLL AUTO-SLIDING KNURLING HOLDER



with medium knurls

### KH 1·2

For Super tool standard knurling wheel : cross cut



(Unit:mm)

Item No.	W	D	H	L	Knurling range	Weight (g)	Applicable knurling wheel	Remarks
KH 1	8.0	5.5	16	130	10 ~ 250	410	KN12 CRL ~ FRL	
KH 2	9.6	6.3	20	147		580	KN30 CRL ~ FRL	