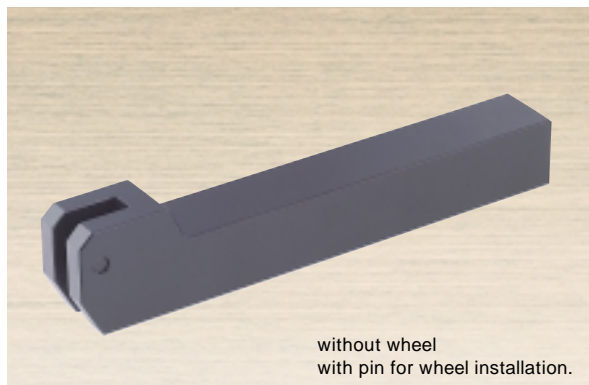


ROLL KNURLING HOLDER S1-MODEL



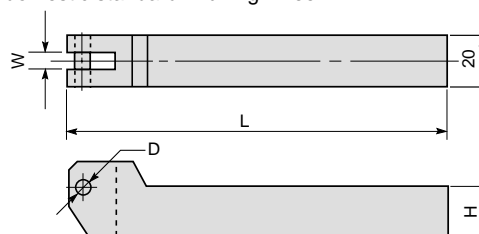
without wheel
with pin for wheel installation.

KHS1

For domestic standard knurling wheel : plain cut

FEATURES

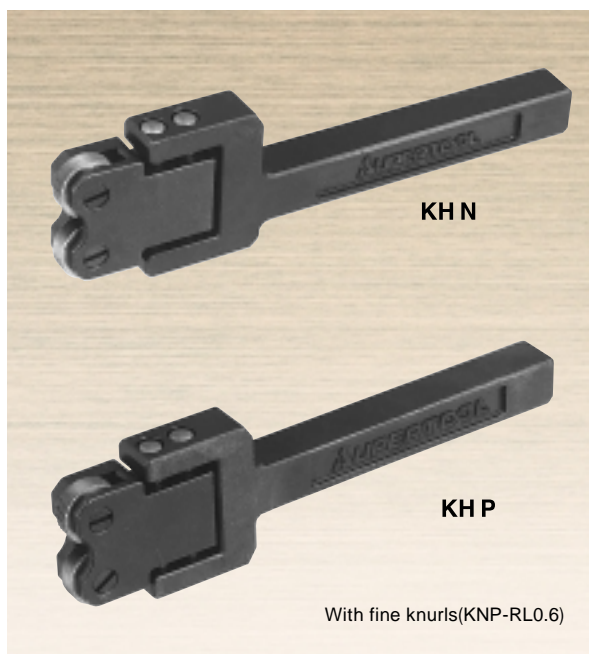
Workable for domestic standard knurling wheel



(Unit:mm)

Item No.	W	D	H	L	Knurling range	Weight (g)	Applicable knurling wheel	Remarks
KHS1	6.5	4.7	20	147	10 ~ 250	420	KNSF14 ~ F50	

ROLL AUTO-SLIDING KNURLING HOLDER (for Processing small material)



KHN

KHP

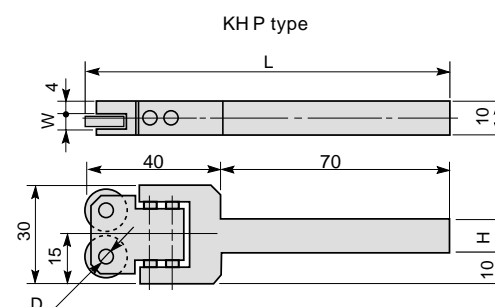
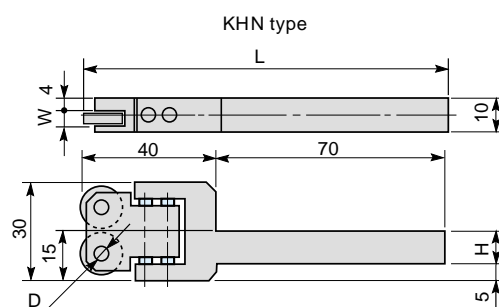
With fine knurls(KNP-RL0.6)

KHN·P

For processing small material : cross cut

FEATURES

- This is a small diameter size model of auto-sliding knurling holder, KH type with up-down sliding type auto-centering mechanism.
Easy installation No-need for accurate positioning Fine finish
- Knurling wheel of 12mm in external diameter is employed.
Applicable to even small-sized material--- Optimal contact with material is realized, rolling force is reduced and stabilized.
Deformation of material at knurling processing is reduced and stabilized processing of fine knurling surface finish is realized.
- 2 types of holder with different shank positions (for knurling wheel) are prepared.
KHN type---The upper side of the shank corresponds with the center line between the 2 knurling wheels.
KHP type---The center of the shank corresponds with the center line between the 2 knurling wheels.
- One side positioning of knurling wheels enables a processing further to the stepped part.



(Unit:mm)

Item No.	W	D	H	L	Knurling range	Weight (g)	Applicable knurling wheel	Remarks
KHN	4	5	10	110	3 ~ 30	110	KNP RL1.0 ~ 0.5	
KHP								