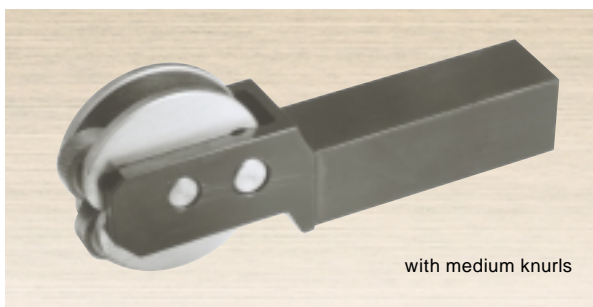




## ROLL KNURLING HOLDER A-MODEL

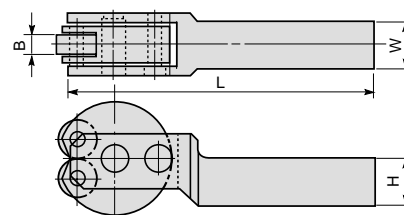


### NA 1 ~ 3

For Super tool standard knurling wheel : cross cut

#### FEATURES

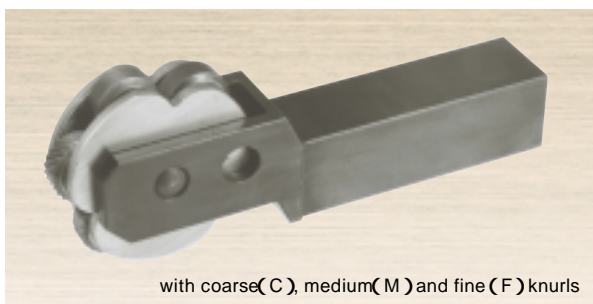
The functioning of the holder with one pair of knurling wheels as auto-centering bearing enhances work efficiency.



(Unit:mm)

Item No.	W	H	L	B	Knurling range	Weight (g)	Applicable knurling wheel	Remarks
NA 1	20	20	130	8.0	10 ~ 250	500	KN12 CRL ~ FRL	
NA 2	25	25	147	9.6		750	KN30 CRL ~ FRL	
NA 3	25	32	164			800		

## ROLL KNURLING HOLDER B-MODEL

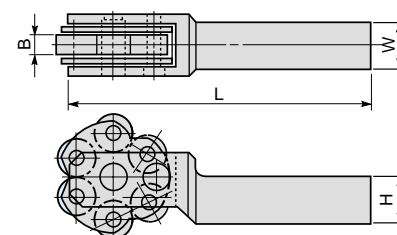


### NB 1 ~ 3

For Super tool standard knurling wheel : cross cut

#### FEATURES

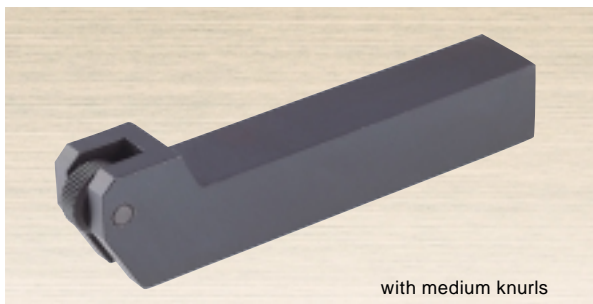
The holder with three pairs of fine, medium and coarse knurling wheels set around the axis part does not require a changing of wheels according to its purposes, thus saving time.



(Unit:mm)

Item No.	W	H	L	B	Knurling range	Weight (g)	Applicable knurling wheel	Remarks
NB 1	20	20	130	8.0	10 ~ 250	530	KN12 CRL ~ FRL	
NB 2	25	25	147	9.6		820	KN30 CRL ~ FRL	
NB 3	25	32	164			900		

## ROLL KNURLING HOLDER S-MODEL

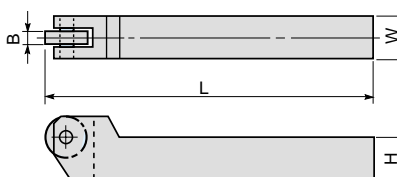


### NS 1 ~ 3

For Super tool standard knurling wheel : plain cut

#### FEATURES

The holder with one medium knurling wheel for plain cut set and the center of the wheel corresponding with the high part of the shank is very easy to use.



(Unit:mm)

Item No.	W	H	L	B	Knurling range	Weight (g)	Applicable knurling wheel	Remarks
NS 1	20	20	130	8.0	10 ~ 250	420	KN12 CF ~ FF	
NS 2	25	25	150	9.6		720	KN30 CF ~ FF	
NS 3	25	32	175			1060		