

# JIB CRANE (Pillar - fixed/-Column type)

JBC 1520HC ~ 2540HC

## Universal-joint type

Jib crane to be fixed on the column with fastening metal fittings. As this type does not damage the column, it is optimal for steel-frame buildings.

### Feature

Even in the building where the ceiling is comparatively low, the space can be effectively used, since there is no pulling from above.

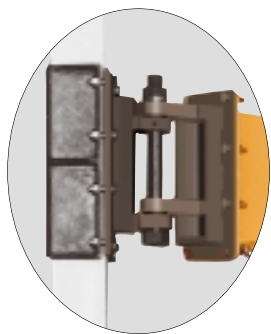
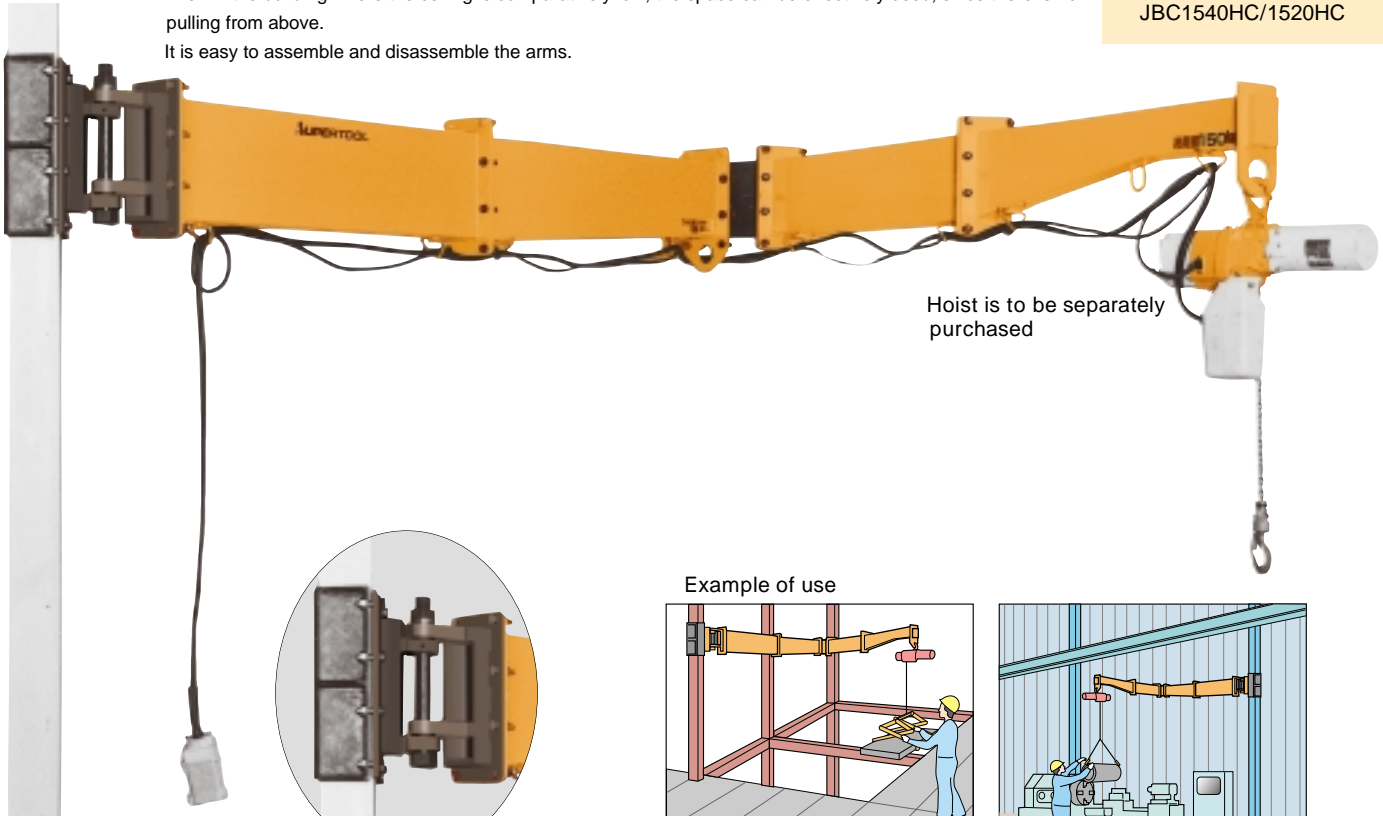
It is easy to assemble and disassemble the arms.

Square column

Dedicated for 150  
JBC2540HC/2520HC

Square column

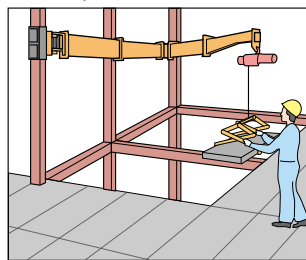
Dedicated for 100  
JBC1540HC/1520HC



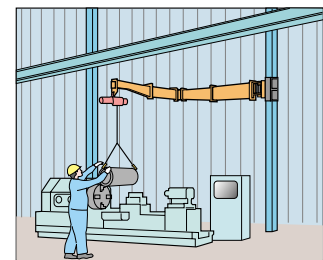
Column fastening fixture

If the column is stronger than specified, you will be able to freely set the height of installation.  
(Installation is to be made by the user.)

### Example of use



Installation of the crane on one of the columns at the building site.  
For construction of floor and external wall panels of housing (ALC and others)  
For the lifting, movement, and carrying in of housing building material from outside.  
As the crane can be disassembled, the parts of the crane can be easily carried to the housing building site in a light van.



Use of the crane by installing it on the column of the workshop.  
As it is easy to attach and detach the crane to and from the column, you will be able to use the single Jib Crane effectively by mounting and dismounting it.

### Dimensions of the column fastening fixture

Item No.	W	Y <sub>1</sub>	P <sub>1</sub>	P <sub>2</sub>	P <sub>3</sub>	d
JBC 1520HC	210	480	150	150	180	14
JBC 1530HC						
JBC 1540HC						
JBC 2520HC	230	550	180	170	200	14
JBC 2530HC						
JBC 2540HC						

(Unit:mm)

### Dimensions of the hook for attaching a hoist

	A	T	h
150kg	60	10	15
250kg	60	14	15

(Unit:mm)

Apart from the indicated specifications, we will provide custom-ordered hooks according to the user's needs.

### SPECIFICATIONS • DIMENSIONS TABLE

(Unit:mm)

Item No.	Rated capacity (kg)	Arm length S	Weight (kg)	Remarks
JBC 1520HC	150	2,043	80	
JBC 1530HC		3,043	90	
JBC 1540HC		4,043	114	
JBC 2520HC	250	2,036	126	
JBC 2530HC		3,036	153	
JBC 2540HC		4,036	180	

### Equipment with a load sensor

Model	Item No.	
Column Type	JBC 1520HCS	New series
	JBC 1530HCS	
	JBC 1540HCS	
	JBC 2520HCS	
	JBC 2530HCS	
	JBC 2540HCS	

You will be separately charged for freight and installation.