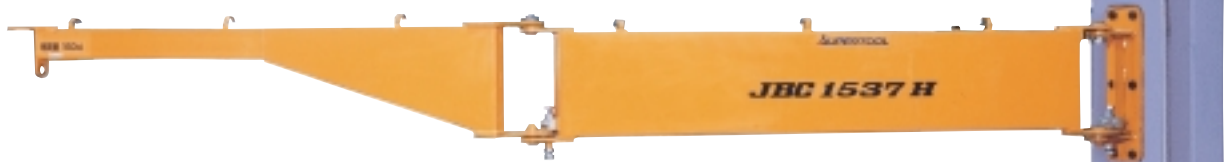


JIB CRANE (Pillar fixed-/Simple type)

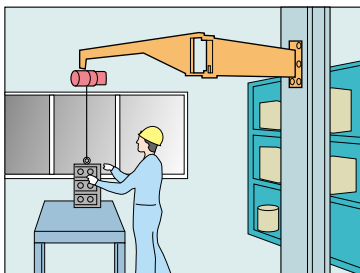
JBC 1037H ~ 1537H

Universal-joint type

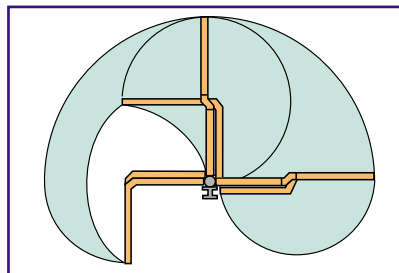
The crane is to be welded or fixed with bolts to the H-shaped steel post for assembly.
Assembly and attachment is very easy, realizing a low price.



Example of use

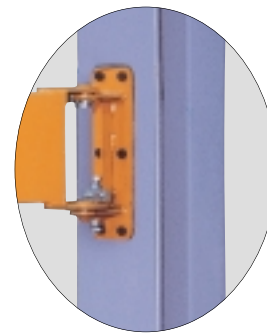


You can effectively operate the crane even at a small place by using the flexibility of the arm joints.



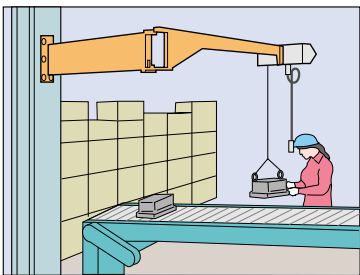
Working area

As the central joint of the arm can be turned as in the above figure, you can secure and effective use of a wide range of working area. (on the assumption that there is no obstacle around)

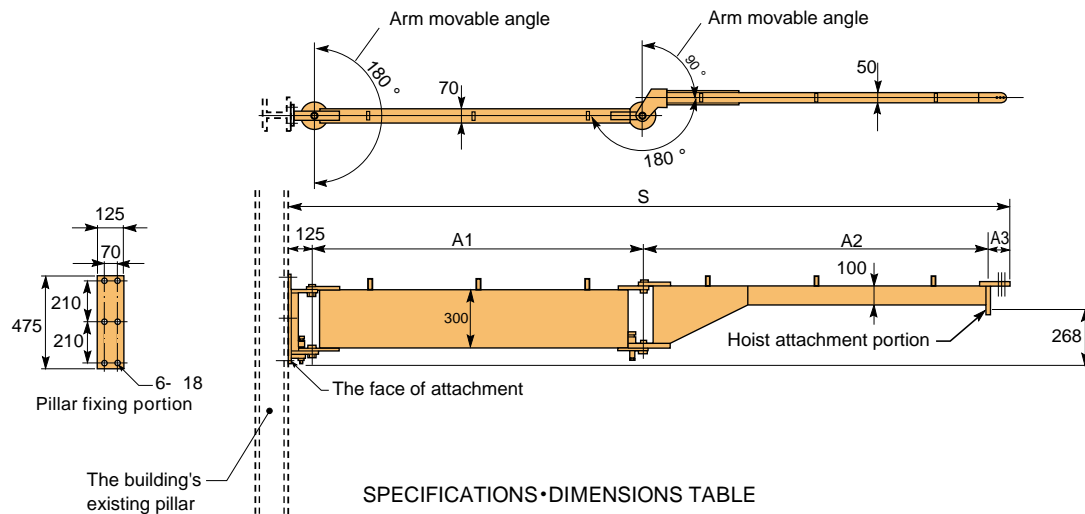


Pillar-fixed portion

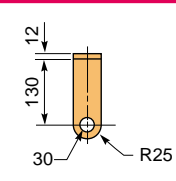
(to be welded or fixed with bolts)
If the pillar is stronger than specified, you will be able to freely set the height of installation.
(Installation is to be made by the user.)



You can prepare for the work and jig by attaching an air balancer. Women can do it with ease..



Dimensions of the hook for attaching a hoist



SPECIFICATIONS•DIMENSIONS TABLE

(Unit:mm)

Item No.	Rated capacity (kg)	S	A ₁	A ₂	A ₃	Weight(kg)	Remarks
JBC 1037H	100	3,750	1,714	1,805	106	60	
JBC 1521H	150	2,000	875	858	142	40	
JBC 1537H		3,750	1,714	1,769	142	80	

Apart from the indicated specifications, we will provide custom-ordered products according to the user's needs. You will be separately charged for freight and installation.