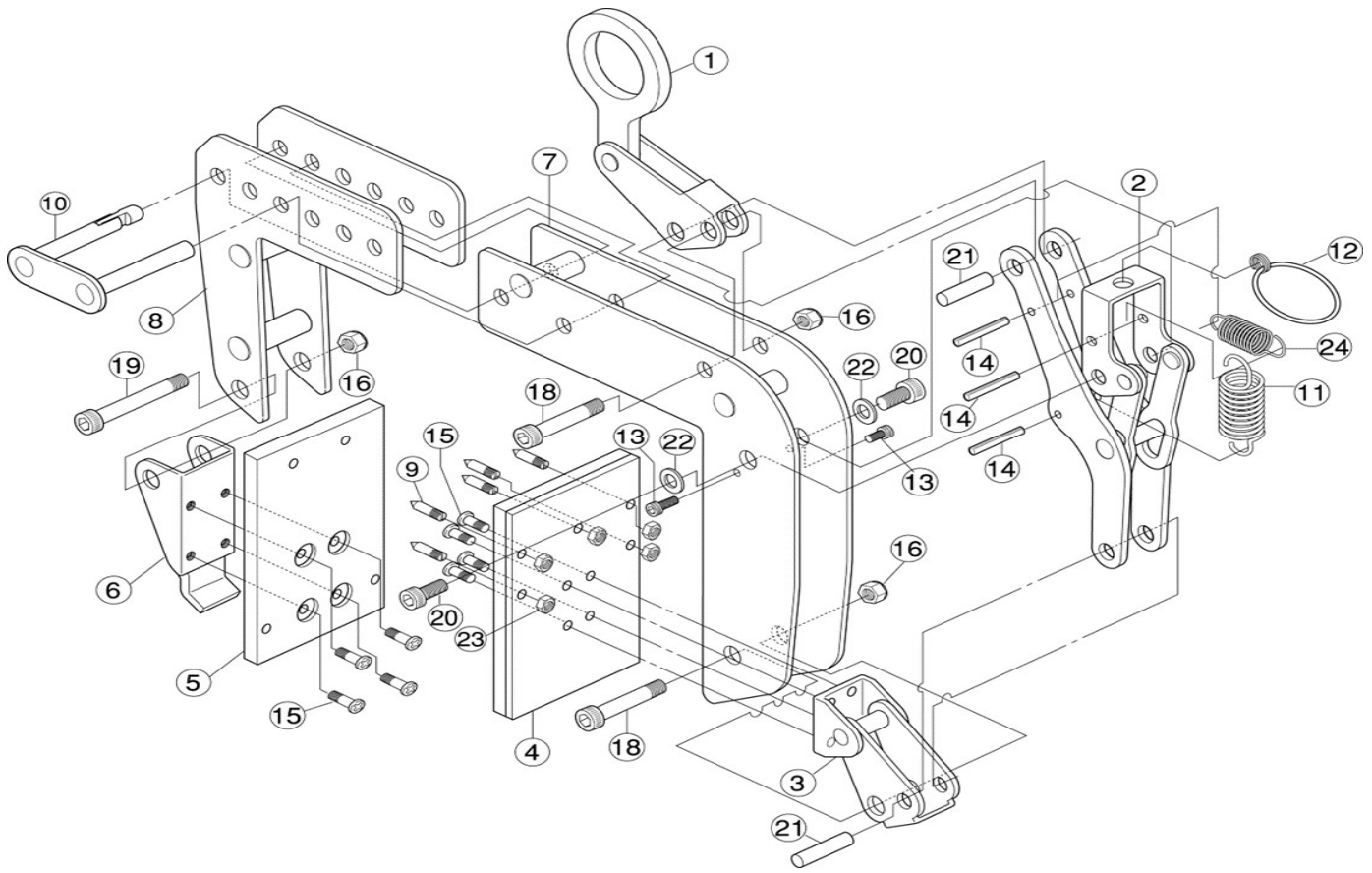


LIFTING CLAMP FOR PANEL/BEAM PTC150・200



Part No.	Part Name	Item No.	Q'ty (pc)	
Shackle Assembly		PTH	1 set	
1	Shackle	PTCH	1	
18	Hex. Hole Head Bolt	PTCN	1	
16	U-nut		1	
Lock Lever Link Assembly		PTF	1 set	
2	Lock Lever Link	PTCF	1	
11・24	Spring (large/small)		1	
12	Handgrip Link (with key ring)		1	
14	Spring Pin		3	
13	Hex. Hole Head Bolt	PTCA	2	
20	Hex. Hole Head Bolt	PTCD	2	
21	Pin	PTCP	1	
22	Collar	PTCY	2	
Cam Assembly		PTT	1 set	
3	Cam	PTCT	1	
18	Bolt	PTCN	1	
16	U-nut		1	
21	Pin	PTCP	1	
Movable Pad Assembly		PTE	1 set	
4	Movable Pad	PTCE	1	
9・23	Spike, Hex. Hole Head Bolt	PTCG	5	
15	Small Round Head Bolt	PTCM	4	

Part No.	Part Name	Item No.	Q'ty (pc)	
Fixed Pad Assembly		PTR	1 set	
5	Fixed Pad	PTCR	1	
6	Fixed Pad Mounting Bracket	PTCQ	1	
15	Small Round Head Bolt	PTCM	4	
19	Hex. Hole Head Bolt	PTCV	1	
16	U-nut		1	

-	Rope	PTCU	1	
8	Arm	PTCJ	1	
10	Adjustment Plate Pin	PTCK	1	

Part No.	Part Name	Item No.	Q'ty (pc)	
11・24	Spring (large/small)	PTCS	1	
12	Handgrip Link (with key ring)	PTCL	1	

⑦ is the main body and not for sale.
 When ordering, add 150 or 200 after Item No.
 (Example: Shackle Assembly is PTH150 or PTH200.)



2024.5.21.