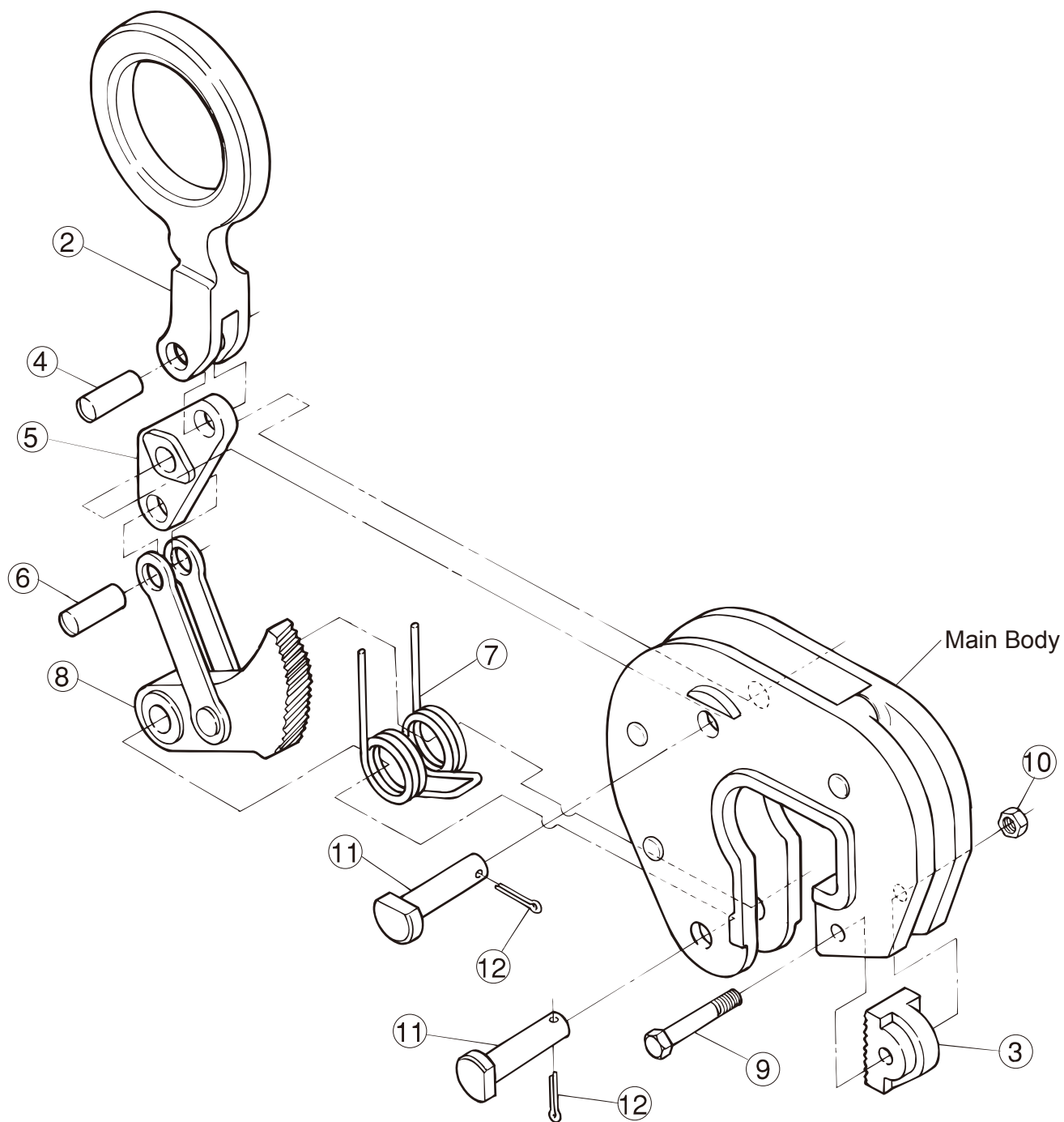


## ■ REPLACEMENT PARTS AND ASSEMBLIES



| Part No.         | Part Name               | Item No. | Set Q'ty |
|------------------|-------------------------|----------|----------|
| Shackle Assembly |                         | DLH      |          |
| 2                | Shackle                 | DLCH     | 1        |
| 4                | Support pin for Shackle | DLCY     | 1        |
| Pad Assembly     |                         | DLP      |          |
| 3                | Pad                     | DLCP     | 1        |
| 9                | Bolt for Pad            | DLCN     | 1        |
| 10               | Nut for Pad             |          | 1        |
| 8                | Cam/Rod                 | DLT      | 1        |

| Part No.      | Part Name          | Item No. | Set Q'ty |
|---------------|--------------------|----------|----------|
| Link Assembly |                    | DLL      |          |
| 5             | L shaped Link      | DLCL     | 1        |
| 6             | Connecting pin     | DLCY     | 1        |
| 11            | Pivot Pin for Cam  | DLCA     | 1        |
| 12            | Cotter Pin         |          | 1        |
| 11            | Pivot Pin for Link | DLB      | 1        |
| 12            | Cotter Pin         |          | 1        |
| 7             | Spring             | DLS      | 1        |

※Periodic lubrication is required at pin and working portion.