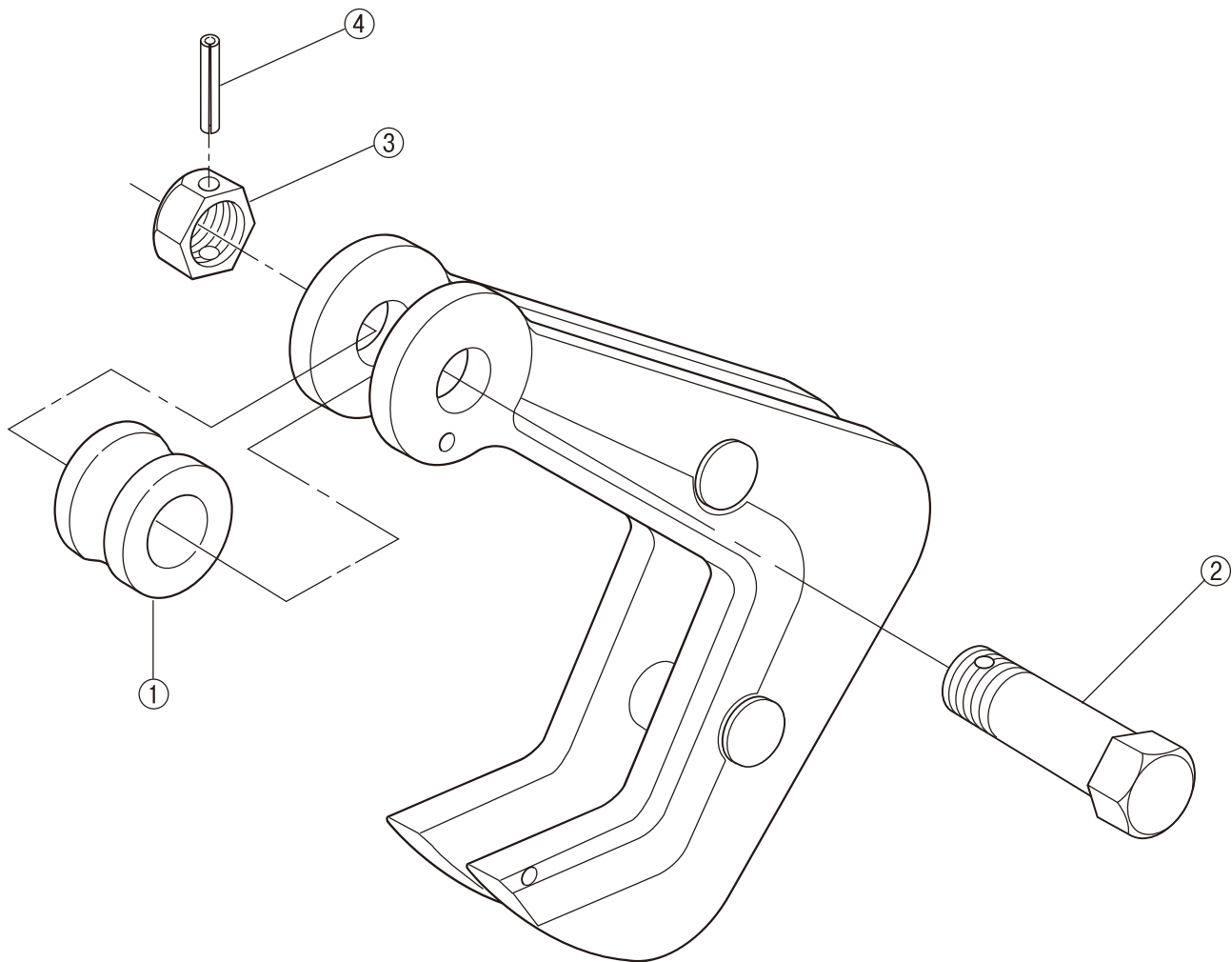


■ REPLACEMENT PARTS AND ASSEMBLIES



| Part No. | Part Name | Item No. | Set Q'ty |
|----------|------------|----------|----------|
| | Roller | HHR | |
| 1 | Roller | HHCR | 1 |
| 2 | Bolt | HHCK | 1 |
| 3 | Nut | | 1 |
| 4 | Spring Pin | HHCP | 1 |

- 1) When ordering, specify the rated capacity (ton) after item No.
(Example: Roller for HHC3 is HHCR3.)
- 2) Periodic lubrication is required at the bolt and working portion.