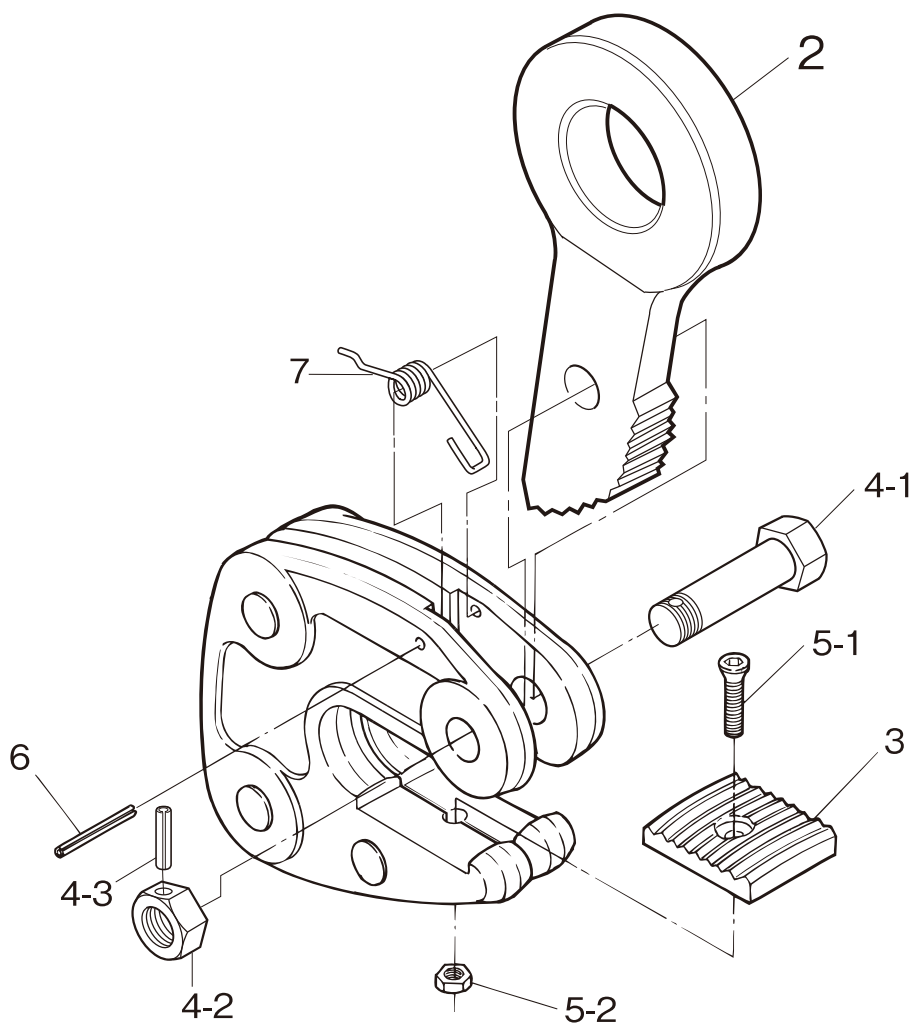


■ REPLACEMENT PARTS AND ASSEMBLIES



| Part No. | Part Name | Item No. | Set Q'ty |
|----------|------------------------------|----------|----------|
| 2 | Cam Assembly | HLCT | 1 |
| | Support Bolt/Nut(for Cam) | HLK | |
| 4-1 | Support Bolt(for Cam) | HLCK | 1 |
| 4-2 | Nut(for Cam) | | 1 |
| 4-3 | Spring Pin(for Support Bolt) | HLCC | 1 |

※2 pcs only for HLC0.5S

Attention:

- 1) When ordering, specify the rated capacity (ton) of Item No. and S or W.
(For instance, the cam assembly for HLC2S is HLCT2S. The pad for HLC1W is HLCA1W.)
- 2) Periodic lubrication is required at the pin and the sliding section.
(Please remove oil from the pad and cam teeth.)

| Part No. | Part Name | Item No. | Set Q'ty |
|----------|------------------------|----------|----------|
| | Pad Assembly | HLA | |
| 3 | Pad | HLCA | 1 |
| 5-1 | Bolt(for Pad) | HLCN | 1 |
| 5-2 | Nylon Nut(for Pad) | | 1 |
| | Spring | HLS | |
| 7 | Spring | HLCS | 1 |
| 6 | Spring Pin(for Spring) | HLCQ | ※1 (2) |