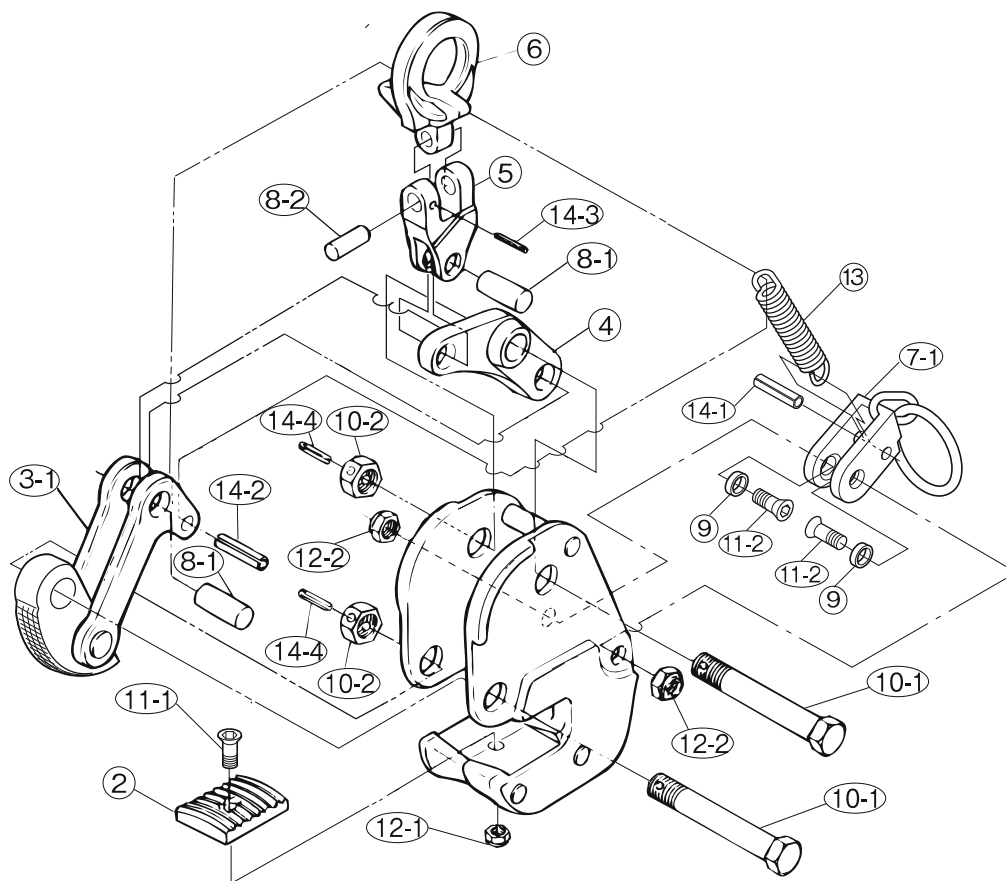


REPLACEMENT PARTS AND ASSEMBLIES



Part No.	Part Name	Item No.	Set Q'ty
SHACKLE ASSEMBLY		GVH	
6	Shackle	GVCH	1
8-2	Connecting pin (Short) (for Shackle/Connector)	GVCX	1
14-3	Spring pin (for Connector)		1
5	Connector	GVCL	1
L-SHAPED LINK		GVM	
4	L-shaped link	GVCM	1
8-1	Connecting pin (Long) (for Connector/L-shaped link)	GVCY	1
CAM SUPPORT BOLT/NUT (for Link)		GVK	
10-1	Support bolt (for Link)		1
10-2	Nut (for Link)		1
14-4	Spring pin (for Support bolt)		1
CAM ASSEMBLY		GVT	
3-1	Cam/Link		1
8-1	Connecting pin (Long) (for L-link/Link)		1
14-2	Spring pin (for Link)		1

Part No.	Part Name	Item No.	Set Q'ty
SUPPORT BOLT/NUT (for Cam)		GVK	
10-1	Support bolt (for Cam)		1
10-2	Nut (for Cam)		1
14-4	Spring pin (for Support bolt)		1
PAD ASSEMBLY		GVP	
2	Pad	GVCP	1
11-1	Bolt (for Pad)	GVCV	1
12-1	Nylon nut (for Pad)		1
LOCK HANDLE ASSEMBLY		GVG	
7-1	Lock handle	GVCG	1
11-2	Hex. hole disc bolt (for Lock handle)	GVCF	2
12-2	U-nut (for Lock handle)		2
9	Collar (for Lock handle)		2
14-1	Spring pin (for Lock handle)		1
13	Spring	GVCS	1

1) When ordering, specify the rated capacity (ton) of item No. and E or EN.

(Example: Shackle assembly for GVC1E is GVH1E.)

(Example: Pad assembly for GVC0.5EN is GVP0.5EN.)

2) Periodic lubrication is required at pin and working portion.

(Remove oil of pad and cam teeth.)