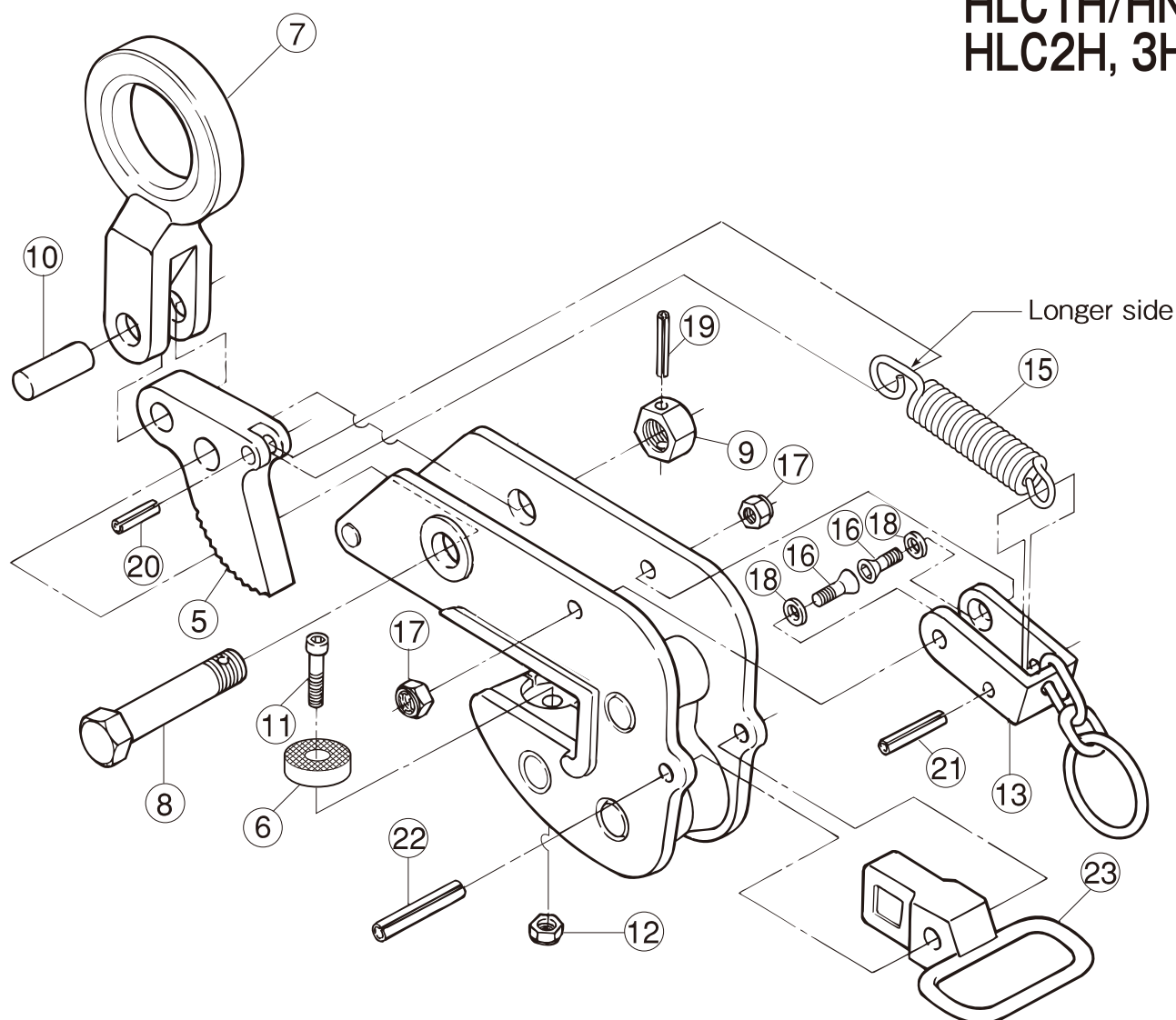


REPLACEMENT PARTS AND ASSEMBLIES HLC0.5H/HN, HLC1H/HN, HLC2H, 3H



Part No.	Part Name	Item No.	Set Q'ty	Part No.	Part Name	Item No.	Set Q'ty
SHACKLE ASSEMBLY				HANDLE ASSEMBLY			
7	Shackle	HLCH	1	13	Lock handle	HLCU	1
10	Shackle support pin	HLCY	1	16	Hex. hole disc bolt (for Lock handle)	HLCK	2
CAM ASSEMBLY				17	U shaped nut (for Lock handle)		2
5	Cam	HLCT	1	18	Collar (for Lock handle)	HLCC	2
20	Spring pin (for Spring)	HLCR	1	21	Spring pin (for Lock handle)	HLCQ	1
8	Support bolt (for Cam)	HLCN	1				
9	Nut (for Cam)		1	15	Spring	HLCS	1
19	Spring pin (for Support bolt)	HLCO	1				
PAD ASSEMBLY				GRIP ASSEMBLY			
6	Pad	HLCP	1	23	Grip	HLCG	1
11	Bolt (for Pad)	HLCV	1	22	Spring pin (for Grip)	HLCJ	1
12	Nylon nut (for Pad)		1				

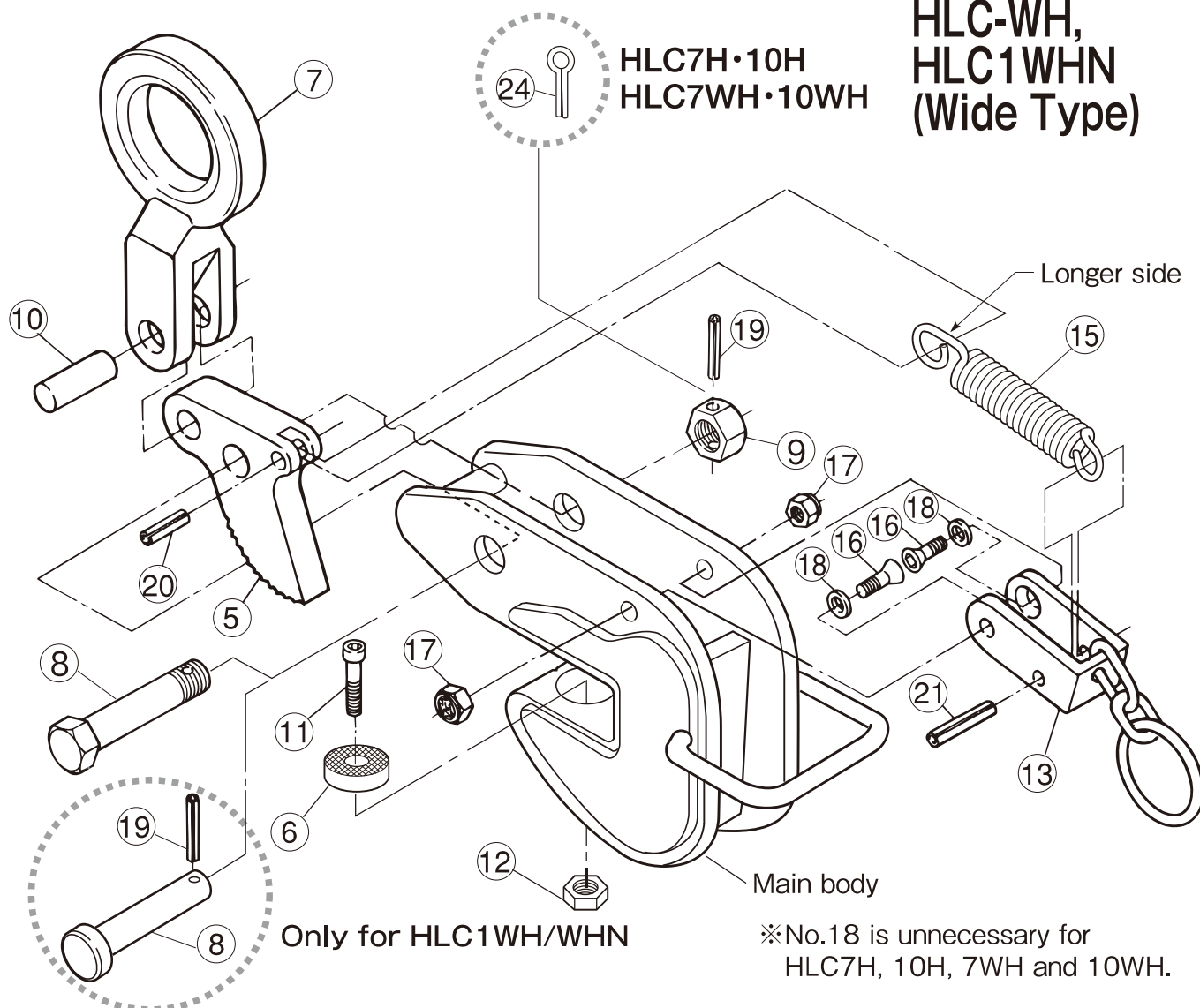
1) When ordering, specify the rated capacity (ton) of item No. and H or HN.

(Example: Cam for HLC2H is HLCT2H.)

2) Periodic lubrication is required at pin and working portion.

REPLACEMENT PARTS AND ASSEMBLIES

**HLC5H-10H
HLC-WH,
HLC1WHN
(Wide Type)**



Part No.	Part Name	Item No.	Set Q'ty
SHACKLE ASSEMBLY		HLH	
7	Shackle	HLCH	1
10	Shackle support pin	HLCY	1
CAM ASSEMBLY		HLT	
5	Cam	HLCT	1
20	Spring pin (for Spring)	HLCR	1
8	Support bolt (for Cam)	HLCN	1
9	Nut (for Cam)		1
19	Spring pin (for Support bolt)	HLCO	1
※8	Support pin (for Cam)	HLCN	1
※19	Spring pin (for Support bolt)	HLCO	1
※24	Sprit pin	HLCW	1

Part No.	Part Name	Item No.	Set Q'ty
PAD ASSEMBLY		HLP	
6	Pad	HLCP	1
11	Bolt (for Pad)	HLCV	1
12	Nylon nut (for Pad)		1
HANDLE ASSEMBLY		HLU	
13	Lock handle	HLCU	1
16	Hex. hole disc bolt (for Lock handle)	HLCK	2
17	U shaped nut (for Lock handle)		2
18	Collar (for Lock handle)	HLCC	2
21	Spring pin (for Lock handle)	HLCQ	1
15	Spring	HLCS	1

Parts marked with※ apply to HLC1WH/WHN only.

1) When ordering, specify the rated capacity (ton) of item No. and H, WH or WHN.

(Example: Cam for HLC1WH is HLCT1WH.)

2) Periodic lubrication is required at pin and working portion.