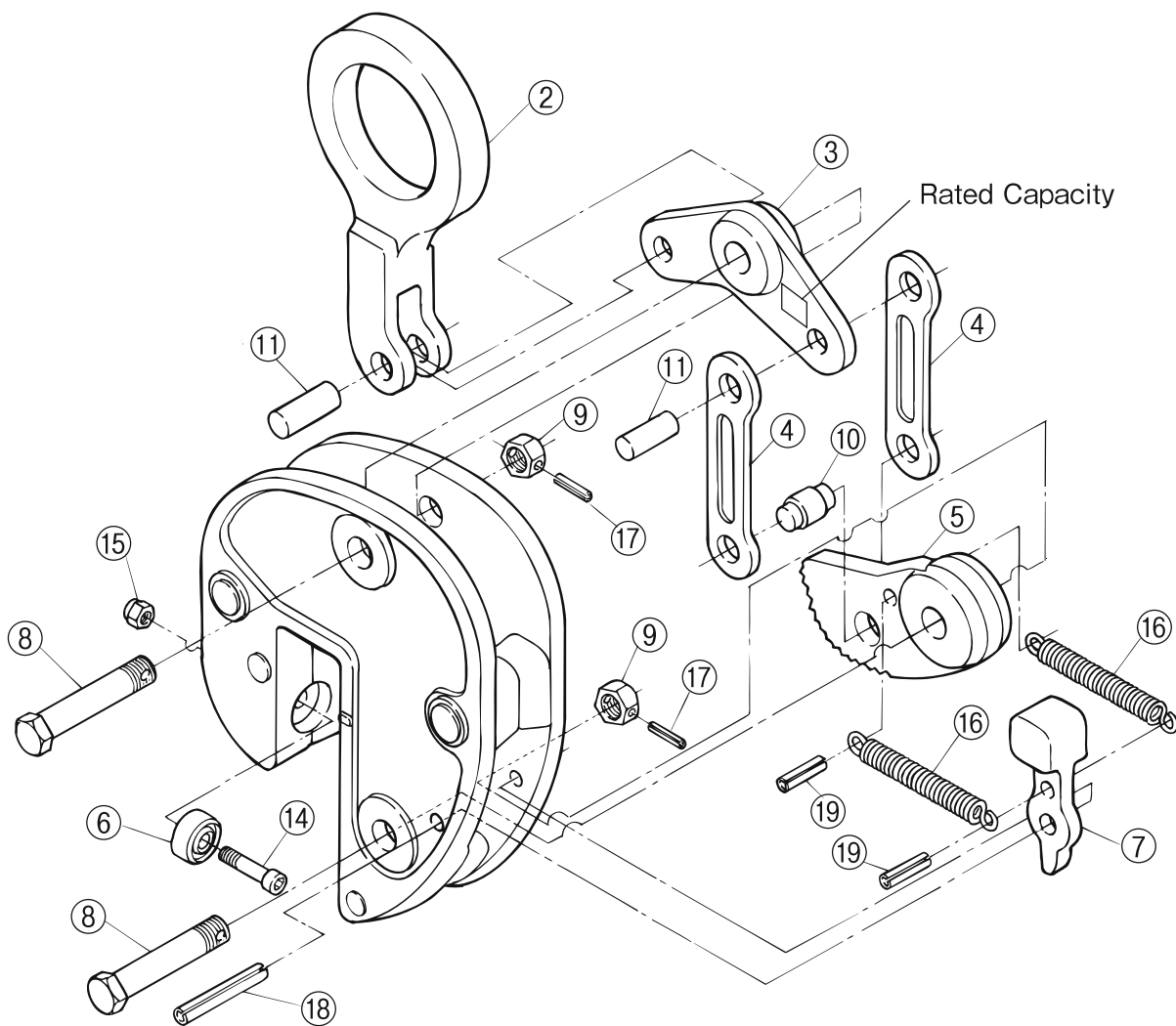


# REPLACEMENT PARTS AND ASSEMBLIES



Part No.	Part Name	Item No.	Set Q'ty
<b>Shackle Assembly</b>		<b>SVH</b>	
2	Shackle	SVCH	1
11	Support pin for Shackle	SVCY	1
<b>Link Assembly</b>		<b>SVL</b>	
3	L-shaped Link	SVCL	1
4	I-shaped Link	SVCI	2
11	Connecting Pin (for Link)	SVCY	1
8	Support Bolt (for Link)	SVCX	1
9	Support Nut (for Link)		1
17	Spring Pin (for Support bolt)	SVCD	1
<b>Cam Assembly</b>		<b>SVT</b>	
5	Cam	SVCT	1
19	Spring Pin (for Spring)	SVCQ	1
8	Support Bolt (for Cam)	SVCX	1
9	Support Nut (for Cam)		1
17	Spring Pin (for Support Bolt)	SVCD	1
10	Connecting Pin (for Cam)	SVCK	1

Part No.	Part Name	Item No.	Set Q'ty
<b>Pad Assembly</b>		<b>SVP</b>	
6	Pad	SVCP	1
14	Support Bolt (for Pad)	SVCV	1
15	Nylon Nut (for Pad)		1
<b>Stopper Assembly</b>		<b>SVR</b>	
7	Stopper	SVCR	1
19	Spring Pin (for Spring)	SVCQ	1
18	Spring Pin (for Stopper)	SVCU	1
16	Spring	SVCS	2

- 1) When ordering, specify the rated capacity (ton) of item No.  
(Example: Cam for SVC3 is SVT3)
- 2) Periodic lubrication is required at pin and working portion.