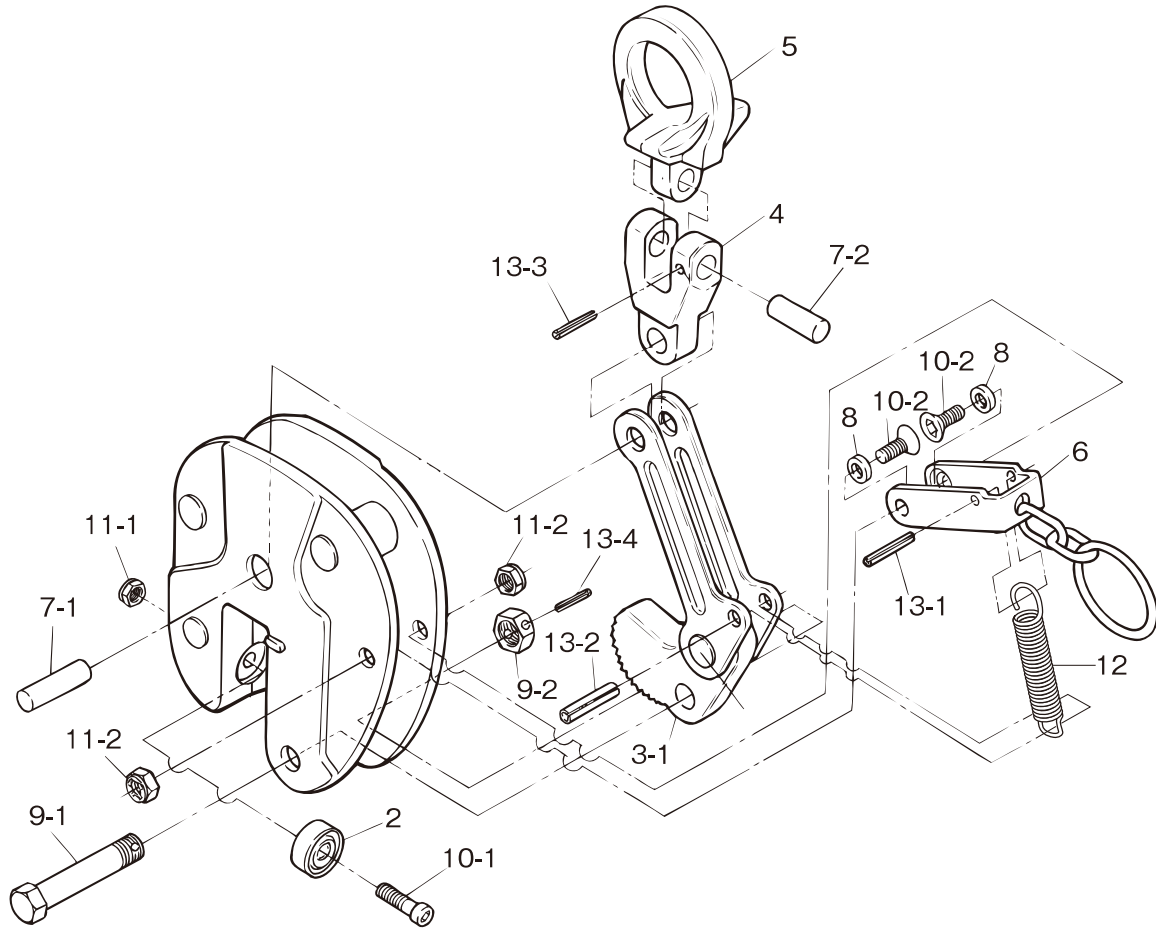


■ REPLACEMENT PARTS AND ASSEMBLIES



Part No.	Part Name	Item No.	Q'ty(pc)
Shackle Assembly		SVH	
5	Shackle	SVCH	1
7-2	Connecting Pin (Short)(for Shackle/Connector)	SVCX	1
13-3	Spring Pin (for Connector)	SVCR	1
4	Connector	SVCJ	1
7-1	Connecting Pin (long) (for Connector/Link)	SVCY	1
Cam Assembly		SVT	
3-1	Cam/Link	SVCT	1
13-2	Spring Pin (for Link)	SVCU	1
Cam Support Pin Assembly		SVK	
9-1	Support Bolt (for Cam)	SVCK	1
9-2	Support Nut (for Cam)		1
13-4	Spring Pin (for Support Bolt)	SVCO	1

Part No.	Part Name	Item No.	Q'ty(pc)
Pad Assembly		SVP	
2	Pad	SVCP	1
10-1	Bolt (for Pad)	SVCV	1
11-1	Nylon Nut (for Pad)		1
Lock Handle		SVG	
6	Lock Handle	SVCG	1
10-2	Hex. Head Disc Bolt (for Lock Handle)	SVCF	2
11-2	U-nut (for Lock Handle)		2
8	Collar (for Lock Handle)	SVCZ	2
13-1	Spring Pin (for Lock Handle)	SVCQ	1
12	Spring	SVCS	1

1)When ordering, specify the rated capacity (ton) of Item No. and E or EN.
(Example: Cam Assembly for SVC1E is SVT1E.)

2)Periodic lubrication is required at pin and working portion.
(Remove oil from Pad and Cam teeth.)