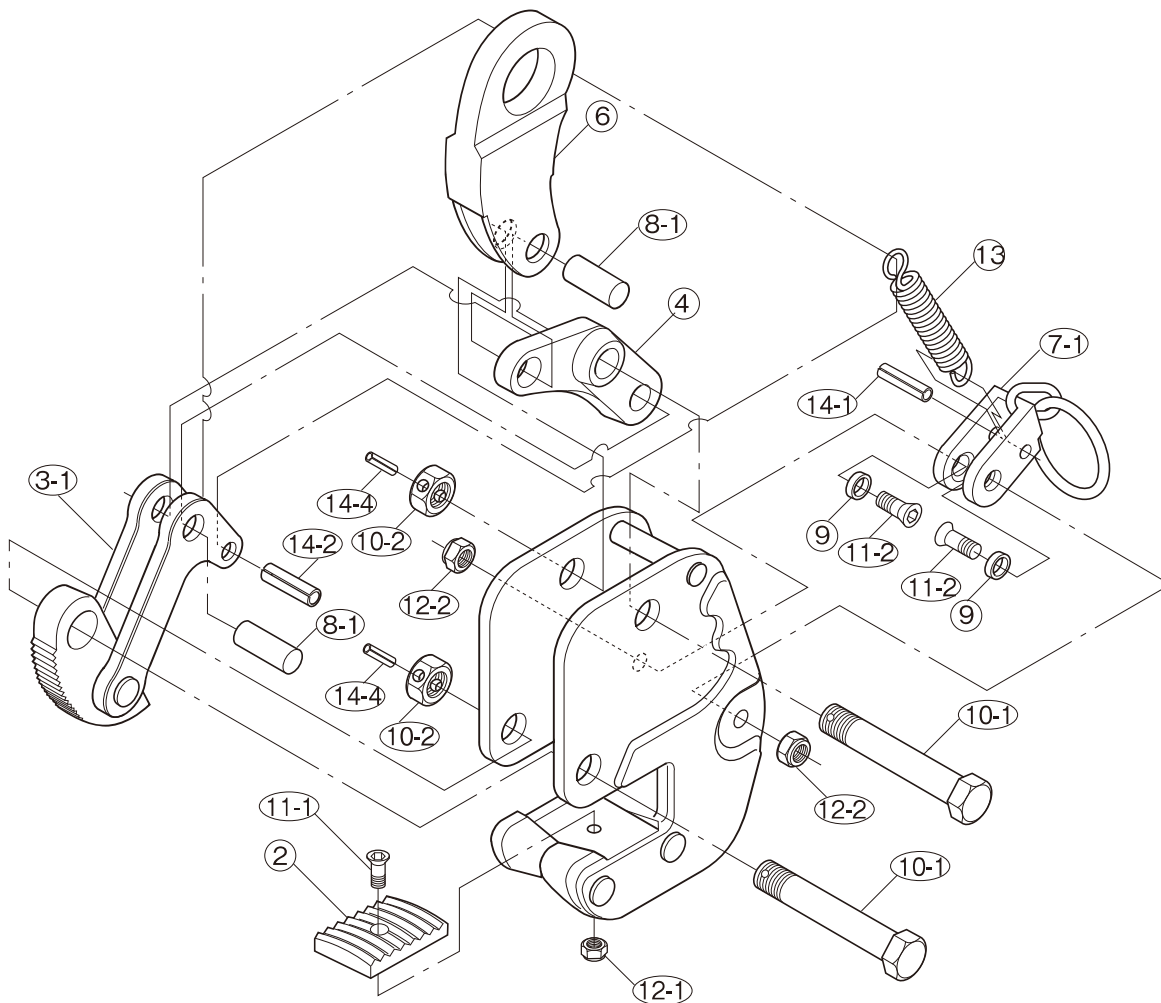


# REPLACEMENT PARTS AND ASSEMBLIES



Part No.	Part Name	Item No.	Set Q'ty	Part No.	Part Name	Item No.	Set Q'ty
6	SHACKLE ASSEMBLY	GVH	1		SUPPORT BOLT/NUT (for Cam)	GVK	
	L-SHAPED LINK	GVM		10-1	Support bolt (for Cam)		1
4	L-shaped link	GVCN	1	10-2	Nut (for Cam)		1
8-1	Connecting pin (for Link)	GVCY	1	14-4	Spring pin (for Cam)		1
	SUPPORT BOLT/NUT (for Link)	GVK			PAD ASSEMBLY	GVP	
10-1	Support bolt (for Link)		1	2	Pad	GVCP	1
10-2	Nut (for Link)		1	11-1	Bolt (for Pad)	GVCV	1
14-4	Spring pin (for Support bolt)		1	12-1	Nylon nut (for Pad)		1
	CAM ASSEMBLY	GVT			LOCK HANDLE ASSEMBLY	GVG	
3-1	Cam/Link		1	7-1	Lock handle	GVCG	1
8-1	Connecting pin (Long) (for L-link/Link)		1	11-2	Hex. hole disc bolt (for Lock handle)	GVCF	2
14-2	Spring pin (for Link)		1	12-2	U-nut (for Lock handle)		2
				9	Collar (for Lock handle)		2
				14-1	Spring pin (for Lock handle)		1
				13	Spring	GVCS	1

1) When ordering, specify the rated capacity (ton) of item No. and R.

(Example: Shackle assembly for GVC1R is GVH1R)

2) Periodic lubrication is required at pin and working portion.

(Remove oil of pad and cam teeth.)