

BALANCE (Adjustable span type with ring and upper wire rope)

Model : LSB-2H

OPERATING METHOD

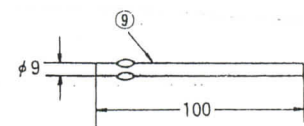
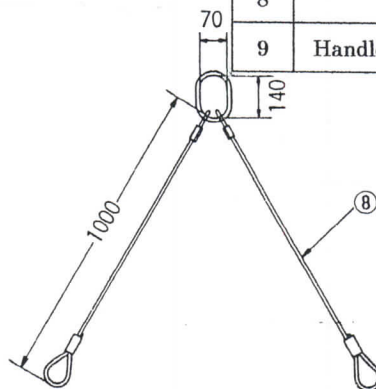
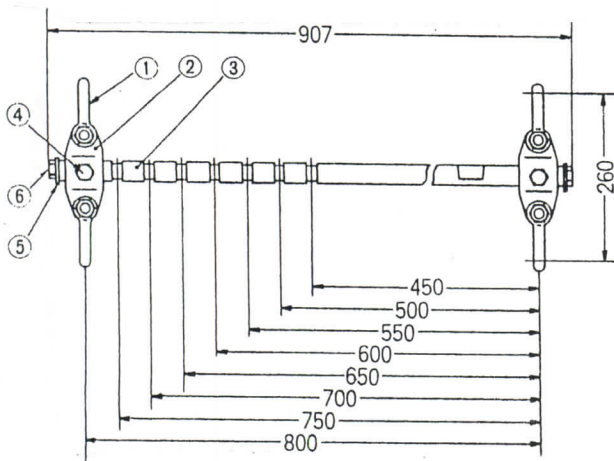
● SPECIFICATIONS AND MAJOR DIMENSIONS

1. SPECIFICATIONS

| Item No. | Rated capacity | Span setting | Net weight |
|----------|----------------|--|------------------------------|
| LSB-2H | 2ton | 450,500,550,600,650, 700,750, 800mm | 20kg (15kg only for body) |

2. PARTS NAME

| No. | Parts Name | Qty |
|-----|---------------------------------|-----|
| 1 | Shackle | 4 |
| 2 | Connecting link | 2 |
| 3 | Bar | 1 |
| 4 | Lock bolt | 4 |
| 5 | Washer | 2 |
| 6 | Stop bolt | 2 |
| 8 | Upper wire rope | 1 |
| 9 | Handle for installing lock bolt | 1 |



When lifting a long work piece, use this balance for stable lifting and handling.

● FEATURES

1. This balance enhances the efficiency of laying operation and maximizes the capacity of lifting clamps.
2. The design of this balance enables for safety operation without incorrect and excessive uses.

● Reference figure of operating method 1

● OPERATING METHOD

1. Connect the wire rope to the balance.
2. Connect the crane hook to the ring of wire rope and lifting clamps to the lower part of shackle of the balance.
3. Loosen the lock bolt and move the connecting link up to the correct groove position according to the length of the lifting work piece. Adjust the length and tighten the lock bolt again with the handle for installing lock bolt.

