

Balance with hook for fork lift

FLH1 FLH2

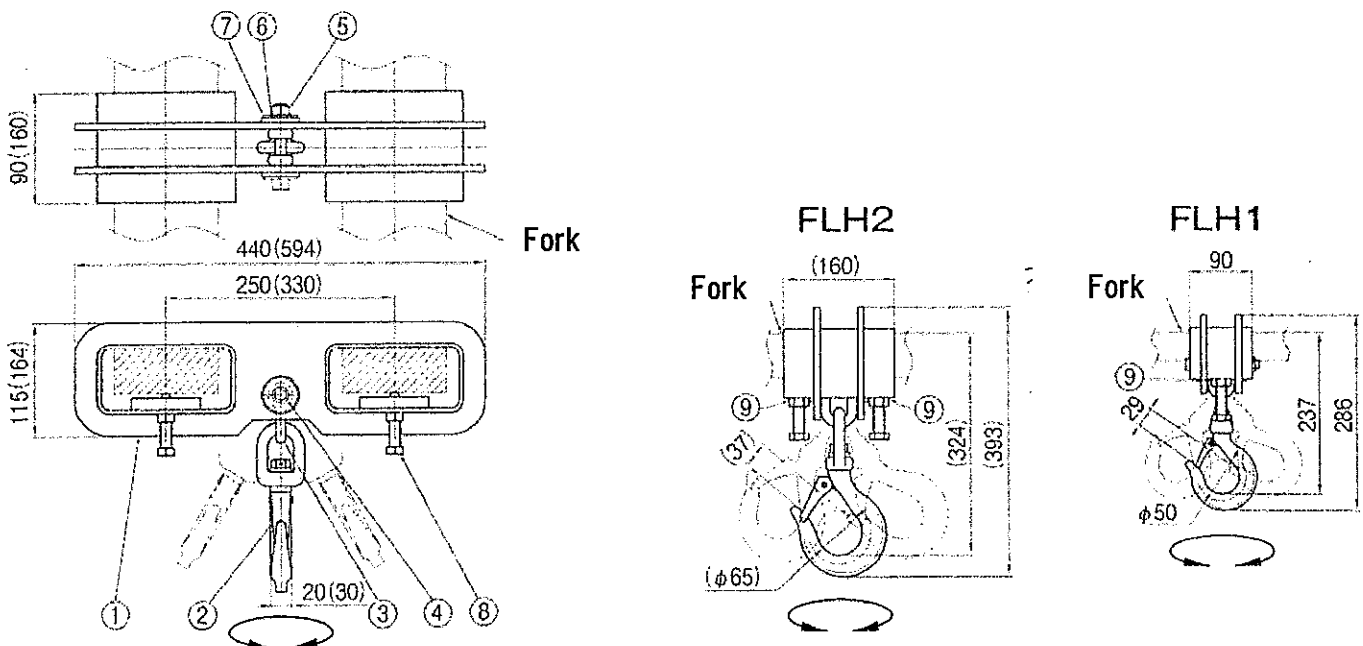
FEATURES

1. Attaching of the balance will change a fork lift to a mobile crane.
2. Only tighten the securing bolts to fix the balance.
3. The latch is attached to the swivel hook for omnidirectional-operation and is vibration-proof.

SPECIFICATIONS

Item No.	Rated capacity (ton)	Applicable fork (mm)		Net weight (Kg)
		Width	Thickness	
FLH1	1	70~120	15~40	12
FLH2	2	120~150	38~65	24

MAJOR DIMENSIONS AND PARTS NAMES



No.	Parts Name	Q'ty	No.	Parts Name	Q'ty
①	Body	1	⑥	Collar	2
②	Swivel hook	1	⑦	Washer	2
③	Shackle	1	⑧	Securing bolt	2 (4)
④	Bolt for attaching a hook	1	⑨	Lock nut	2 (4)
⑤	Nut for attaching a hook	1			

Q'ty and dimensions inside () are for FLH2