

## REPLACEMENT PARTS AND FITTINGS

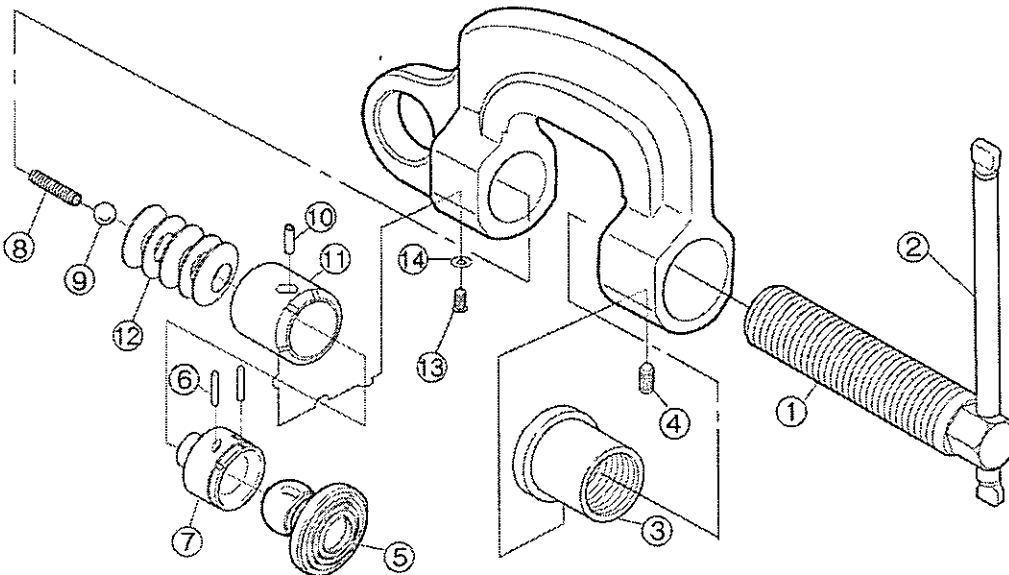
PARTS NO.	PARTS NAME			QTY.
	SET	DETAIL	ITEM No.	
1	SCREW	SCREW	SJCR	1
2		HANDLE		1
3	SLEEVE	SLEEVE	SJCB	1
4		HEX. HOLE HEAD SCREW		1
5	CAM	CIRCULAR CAM	SJT	1
6		STOPPER PIN		2
7		CAM HOLDER		1
8		SPRING		1
9		STEEL BALL		1
10		GUIDE PIN		1
11		COLLAR		1
12		DISC SPRING		5
13		HEX. HOLE HEAD BOLT		1
14		SPRING WASHER		1

Attention :

1) When ordering, specify the capacity (TON) of ITEM No. with "S".

(For instance, the screw for SJCR1S is SJCR1S.)

2) Periodic lubrication is required at cam holder and screw.



## ■ How to use

### 1. OPERATION METHOD

- 1) The forcing screw tightens when turned clockwise, and loosens when turned counterclockwise (Right screw).
- 2) When installing clamps, insert a lifting load completely until it comes in contact with the deepest of the mouth of main body and set in a manner that the entire inner circumferential teeth of the cam touches the surface of the load.
- 3) The circular cam retreats about 3mm when the forcing screw is tightened.  
Continue to tighten the forcing screw until it stops where MATCHING-LINES meet in one line. After confirming matching of the lines, tighten further until the force exceeds 25N.m (about 250Kgf. cm).
- 4) When lifting or during other operations, special attention must be given to prevent the handle from loosening by its unintended contract with wire rope or any other objects.

