

Compact Type with Swing Shackle

SVC-E • SVC-EN

VERTICAL LIFTING CLAMP (Lock Handle Type)

CHECK!

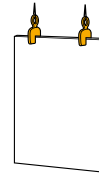


Operation manual & parts drawing

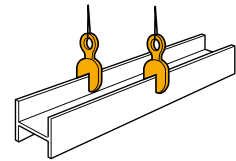
Example of use

Always lift a load at 2 or more points for safety.

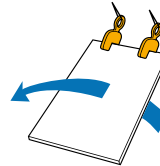
Steel plate vertical lifting



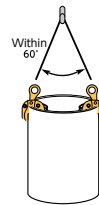
Steel beam lifting



Steel plate turning-over



Pipe lifting

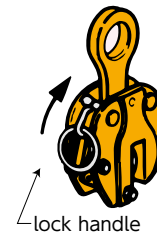
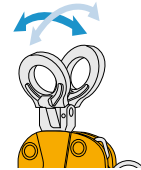


When lifting a pipe, position the clamps so that they face each other as shown on the drawing. (the lifting angle of the sling rope must be kept within 60°.)

Features

- For vertical lifting of steel plates and other steel structures, with more lifting directions possible and light-weight type.
- The spring-type tightening lock mechanism assures a positive initial clamp force.
- Swing shackle type.
- (SVC-EN) The Cam & Pad is designed for less biting marks on the load with the fine pitch cross pattern.

The Swing shackle allows the cam to generate a clamping force on the load at any direction it is pulled.



Tightening lock mechanism

When you pull upward the lock handle, the lock gets set and the clamp grips firmly the load. This lock is very safe and even if the sling rope loosens, or if a shock occurs, the clamp will not come off.

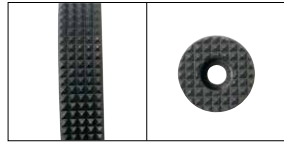


Releasing lock mechanism

When you pull downward the lock handle, the lock gets released. Never attempt a lifting operation in this state. It would be dangerous as the tightening would be insufficient.

SVC-E

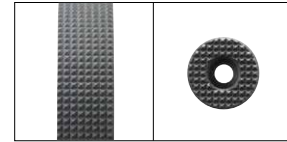
Cam, pad cross type, normal pitch



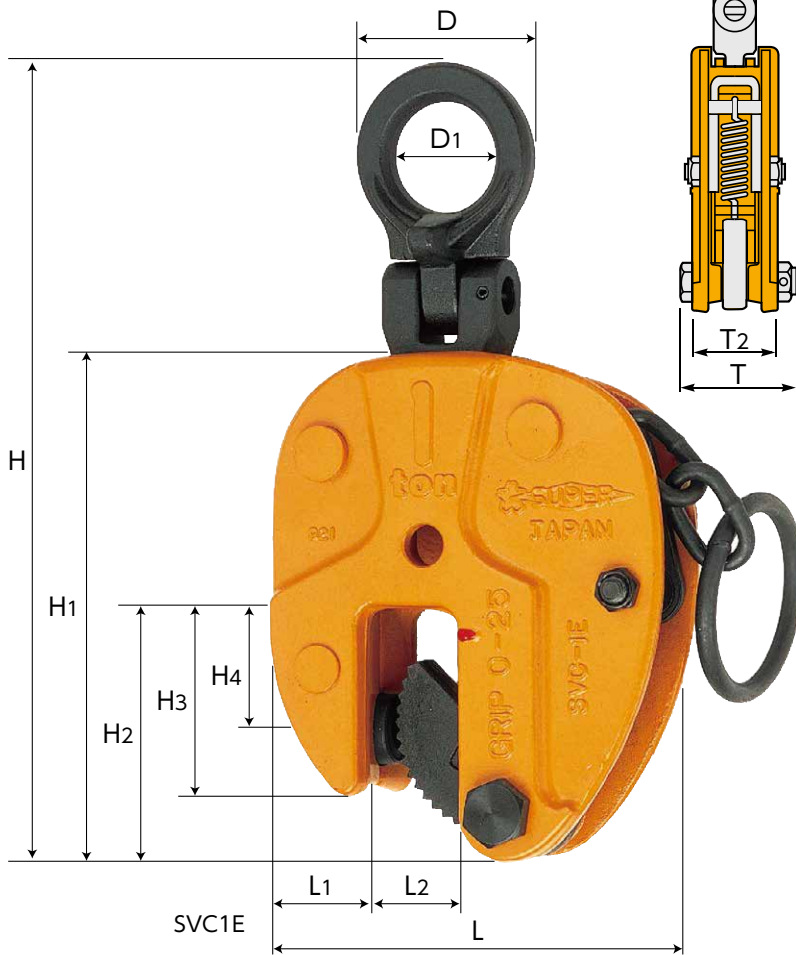
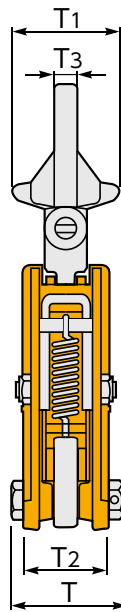
(P=3.0)

SVC-EN

Cam, pad cross type, fine pitch



(P=2.0)



Item No.	Rated capacity (ton)	Clamp range (mm)	Size (mm)														N.W. (kg)
			L	L1	L2	H(MAX)	H1	H2	H3	H4	D	D1	T	T1	T2	T3	
SVC0.3E	0.3	0~16	100	25	19	176	110	57	48	30	45	26	50	39	36	8	1.6
SVC0.5E	0.5	0~19	110	28	22	204	125	67	53	34	52	30	55.5	45	40	10	2.1
SVC1E	1	0~25	130	35	29	257	160	80	60	38	60	35	67.5	53	48	12	3.7
SVC1.5E	1.5	0~28	150	39	33	290	174	88	67	42	76	45	76.5	67	55	14	5.5
SVC2E	2	0~32	162	43	37	335	194	97	73	45	94	55	82	83	58	16	7
SVC0.3EN	0.3	0~16	100	25	19	176	110	57	48	30	45	26	50	39	36	8	1.6
SVC0.5EN	0.5	0~19	110	28	22	204	125	67	53	34	52	30	55.5	45	40	10	2.1
SVC1EN	1	0~25	130	35	29	257	160	80	60	38	60	35	67.5	53	48	12	3.7

* Parts drawings and operation manuals can be downloaded from our website.
 ● For all the appendix, please refer to P.54 ~56