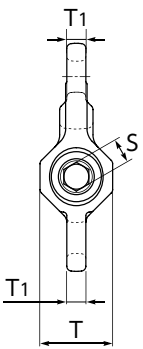
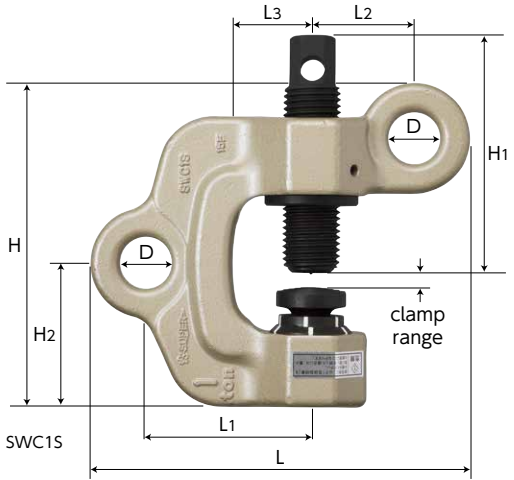


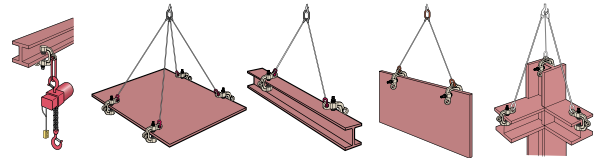
Original Twist Cam System

SWC-S

SCREW CAM CLAMP (Double Eye Type)
Twist Cam Type PAT.



Example of use ⚠ Always lift a load at 2 or more points for safety.
In case of lifting down, cannot be set to slanted-shape part such as steel I beams.



*Common to all the screw cam clamps (SCC, SCC-W, SDC-S, SJC-S, SDC-N, SDC-WN, SJC, SUC, SWC-N, SSC-N, SWC-S).

● The clamp cannot be used for the load shapes described below.

DO NOT USE

- Wedge shape over 8°
- Wedge shape under 8°: Even with wedge shape under 8°, the clamp cannot be used if the clamp part has a taper in the lifting direction.
- Round bars
- Curved shape with radius under 300mm
- Objects with uneven clamp part
- Cylinders with inner diameter under 600mm

Accessories ● 17x21 Double Size Ratchet Wrench (Short Type)

- Features**
- All-purpose clamp that can be used for a variety of operations such as lifting up and down, lateral pulling and turning over.
 - Adequacy of tightening can be visually confirmed by secure and safe structure of the twist cam.
 - When used in horizontal lifting, the screw is placed on top (operator's side), so the tightening operation can be done easily (when installing underneath a beam, the tightening can be done on the operator's side).
 - The tightening mechanism with a screw and a circular cam (special spring type) provides sure clamping force on a load even when the load is landed or when vibrations occur during the lifting operation.
 - The tightening check marks have phosphorescent (glow in the dark) paint for easy visual recognition.

Tightening operation

Visual safety check

check marks are phosphorescent

Tightening

check marks get aligned

the grip of the circular cam gets stronger

Before tightening After tightening When lifting

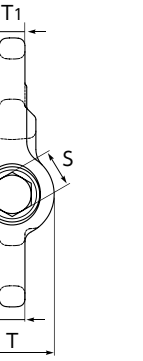
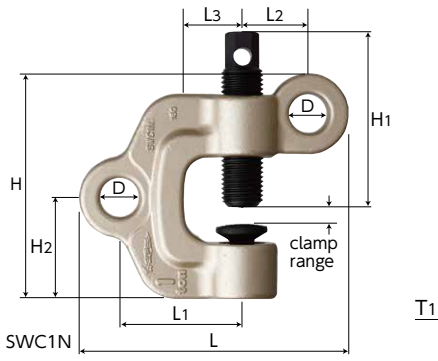
Item No.	Rated capacity (ton)	Clamp range (mm)	Size (mm)											N.W. (kg)
			L	L1	L2	L3	H	H1	H2	D	T	T1	S	
SWC0.5S	0.5	0~25	151.5	63	43.5	30	130	88	57.5	22	50	14	17	1.9
SWC1S	1	0~40	191.5	84	51.5	40	164	120	72.5	26	61	16	21	3.5
SWC2S	2	0~40	224.0	94	62.0	40	184	129	79.0	32	77	18	21	5.8

Note : After having checked that the check marks are aligned, operate tightening over 25N·m (approx. 250kgf·cm).

Normal Type

SWC-N

SCREW CAM CLAMP (Double Eye Type) PAT.



Example of use · Features

* The features (except the twist cam with check marks) and the examples of use are the same as SWC-S.

Accessories

● 17x21 Double Size Ratchet Wrench (Short Type)

Item No.	Rated capacity (ton)	Clamp range (mm)	Size (mm)											N.W. (kg)
			L	L1	L2	L3	H	H1	H2	D	T	T1	S	
SWC0.5N	0.5	0~25	147	63	39	30	122	89	45	22	46	14	21	1.8
SWC1N	1	0~40	185	84	45	40	156	121	58.5	26	50	16	21	3.2
SWC2N	2	0~40	215	94	53	40	170	121	63.5	32	60	18	21	5.0

Note : For the torque value of the screw tightening, operate tightening over 25N·m (approx. 250kgf·cm).

