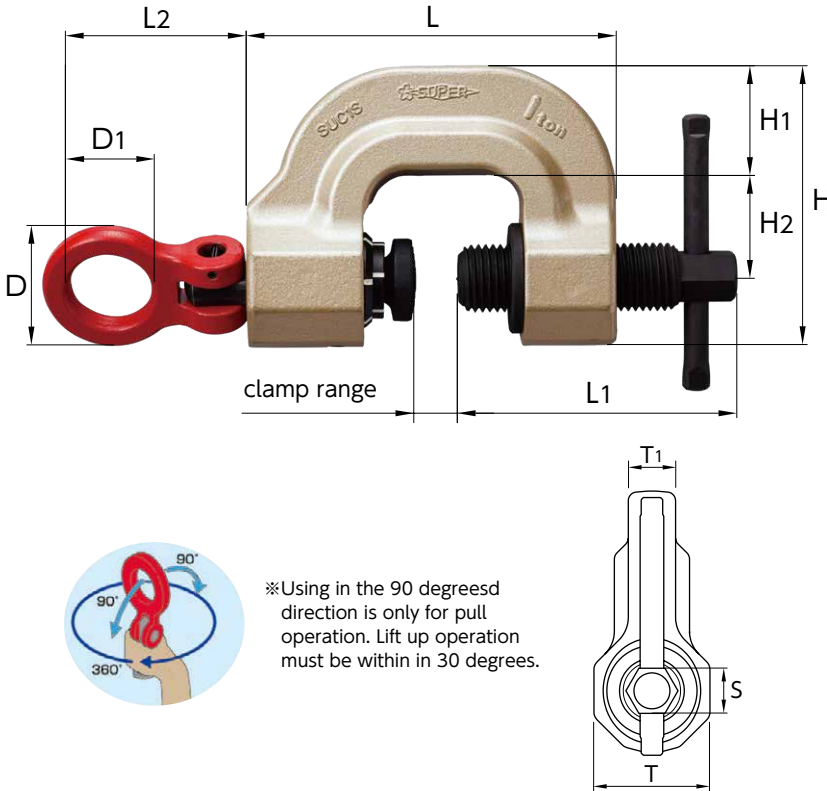
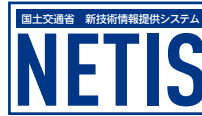


» Original Twist Cam System with Universal Shackle

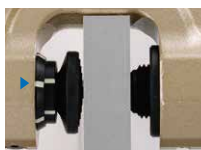
NEW SUC-S

SCREW CAM CLAMP Twist Cam Type PAT.



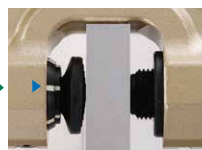
Visual safety check

Safe and secure mechanism that allows tightening check
With Twist Cam Mechanism

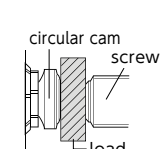


check marks are phosphorescent

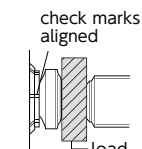
Tightening



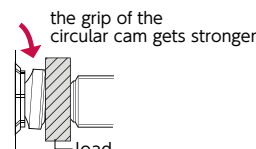
check marks get aligned



Before tightening



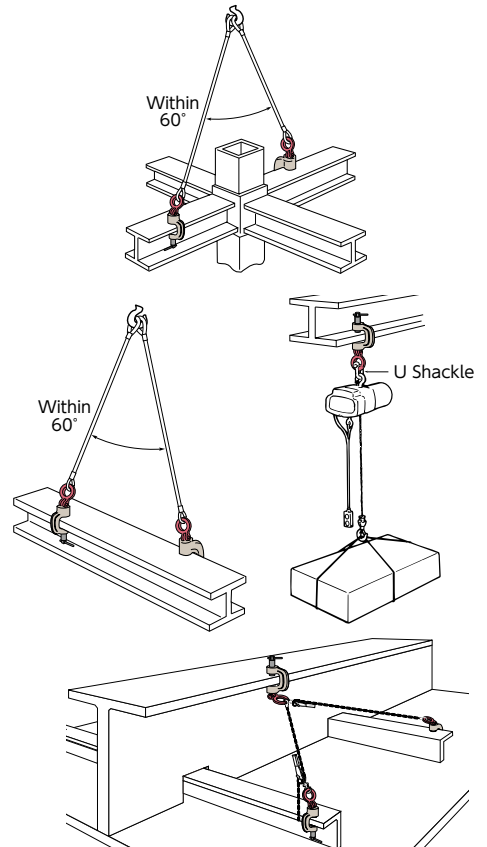
After tightening



When lifting

Example of use

⚠ Always lift a load at 2 or more points for safety.



Features

- The shackle turns at 360° in all lifting or pulling directions, enabling a stable lifting angle and a wide range for pulling operations.
- The screw and the circular cam provide sure clamping force.
- The cam tilts and the clamping force increases in proportion to the load weight in the lateral direction.
- The circular cam has a mechanism with a spring making it always return to its original position.

Applications

- Ideal for lifting, horizontal pulling and turning-over of steel plates and steel beams in industries like civil engineering, construction, shipbuilding, can manufacturing industry.
- Also most suitable as light-weight and compact type for lifting down chain blocks or hoists as a jig, or horizontally pulling structural steel.

Item No.	Rated capacity (ton)	Clamp range (mm)	Size (mm)											N.W. (kg)
			L	L1	L2	H	H1	H2	D	D1	T	T1	S	
SUC0.5S	0.5	0~25	125	89	78	93	38	30	60	35	46	22	21	2.5
SUC1S	1	0~40	160	121	78	122	48	45	60	35	54	22	21	4.2

Note : For the torque value of the screw tightening, operate tightening over 25N·m (approx. 250kgf·cm).

- ★ Parts drawings and operation manuals can be downloaded from our website.
- For all the appendix, please refer to P.54 ~56