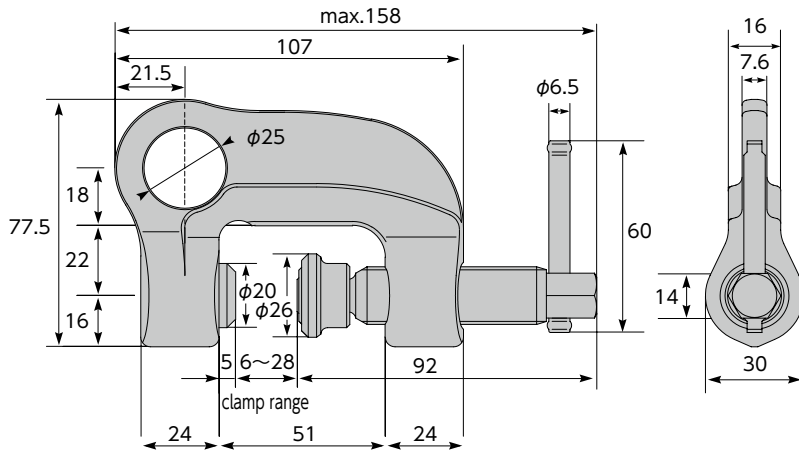


» Anti-accidental Falls

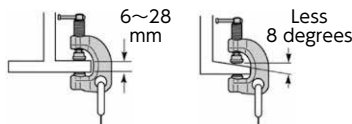
# SSCC130

## CLAMP WITH FALL ARREST EQUIPMENT



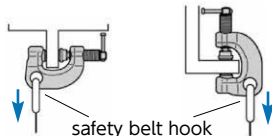
### Handling of clamps with fall arrest equipment

● Right setting point



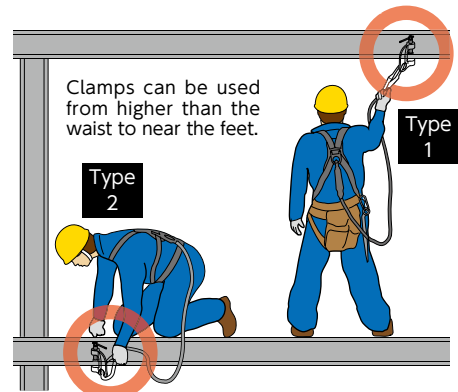
⚠ It cannot be set to slanted-shape part such as steel objects I-beam.

● Right setting direction



### Example of use

■ Fall arrest equipment (safety belt) standard (compatible type 1 and type 2)

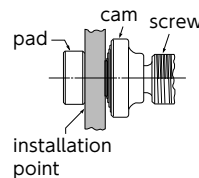


### Features

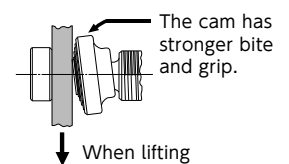
- Upgraded the maximum usable equipment weight up to 130 kg.
- Screws, cams, and pads make clamps hard to come off even when vibrations occur during operation.
- In proportion to the increased tensile force of the rope (lifeline), the cam tilts to increase the tangential surface and grips more strongly.
- High frequency quenching of special alloy steel gives greater toughness and durability.

### Structure of cam

● When setting



● When lifting



Item	Maximum usable equipment weight (kg)	Clamp range (mm)	N.W.(g)
<b>SSCC130</b>	130	6~28	680

\* Equipment weight means the total weight of body and all equipment. \* Please use the type 1 and 2 of fall arrest equipment (safety belt) standard.  
\* For the torque value of the screw tightening, operate tightening over 5N · m (approx. 50kgf · cm).