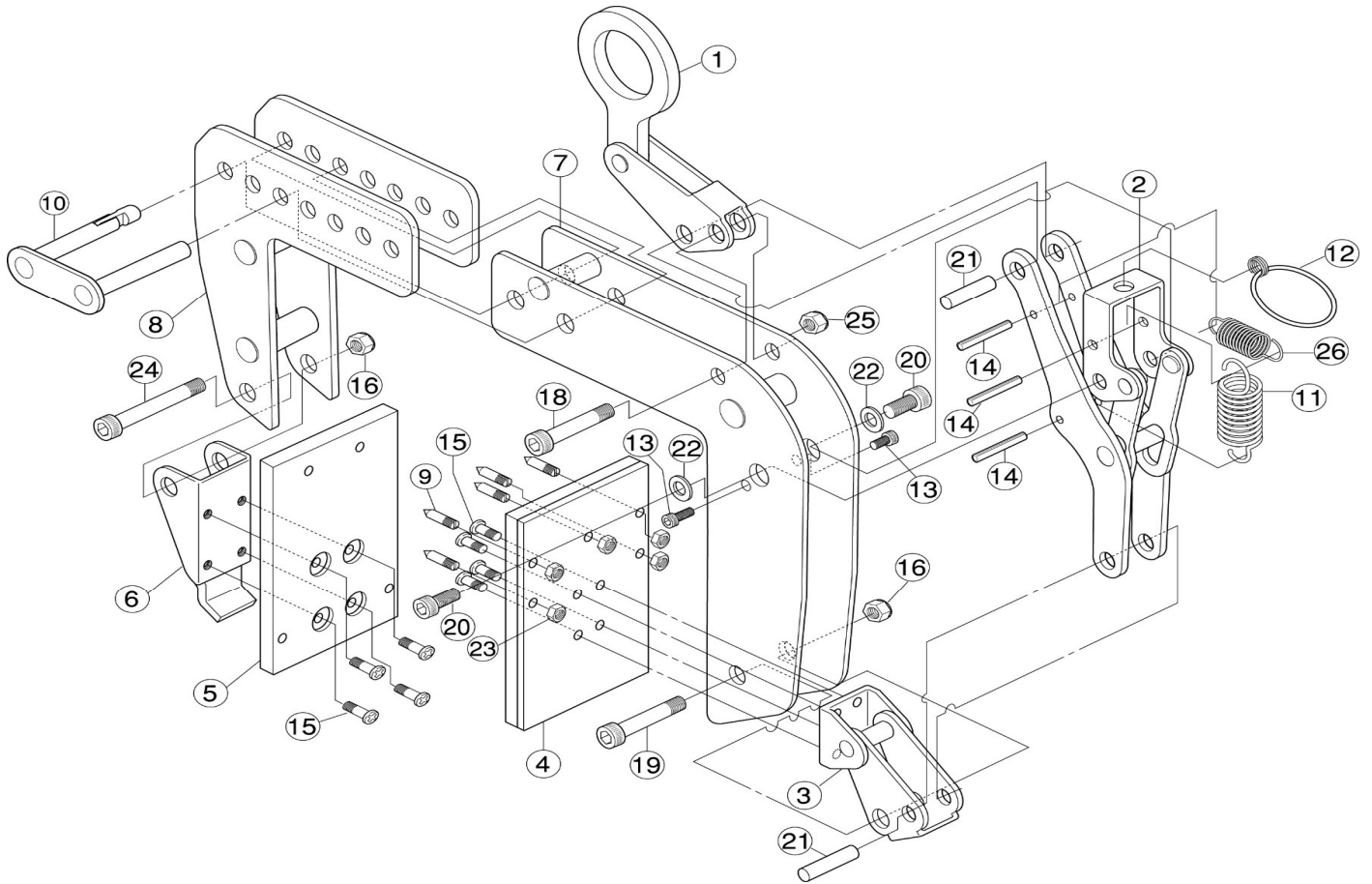


LIFTING CLAMP FOR PANEL/BEAM PTC250



Part No.	Part Name	Item No.	Q'ty (pc)
Shackle Assembly			
1	Shackle	PTCH	1
18	Hex. Hole Head Bolt	PTCZ	1
25	U-nut		1
Lock Lever Link Assembly			
2	Lock Lever Link	PTCF	1
11・26	Spring (large/small)	PTCS	1
12	Handgrip Link (with key ring)	PTCL	1
13	Hex. Hole Head Bolt	PTCA	2
14	Spring Pin	PTCB	3
20	Hex. Hole Head Bolt	PTCD	2
21	Pin	PTCP	1
22	Collar	PTCY	2
Cam Assembly			
3	Cam	PTCT	1
19	Bolt	PTCN	1
16	U-nut		1
21	Pin	PTCP	1
Movable Pad Assembly			
4	Movable Pad	PTCE	1
9・23	Spike, Hex. Hole Head Bolt	PTCG	5
15	Small Round Head Bolt	PTCM	4

Part No.	Part Name	Item No.	Q'ty (pc)
Fixed Pad Assembly			
5	Fixed Pad	PTCR	1
6	Fixed Pad Mounting Bracket	PTCQ	1
15	Small Round Head Bolt	PTCM	4
24	Hex. Hole Head Bolt	PTCV	1
16	U-nut		1

-	Rope	PTCU	1
8	Arm	PTCJ	1
10	Adjustment Plate Pin	PTCK	1

Part No.	Part Name	Item No.	Q'ty (pc)
11・26	Spring (large/small)	PTCS	1
12	Handgrip Link (with key ring)	PTCL	1

⑦ is the main body and not for sale.

When ordering, add 250 after Item No. (Example: Shackle Assembly is PTH250.)



2024.5.21