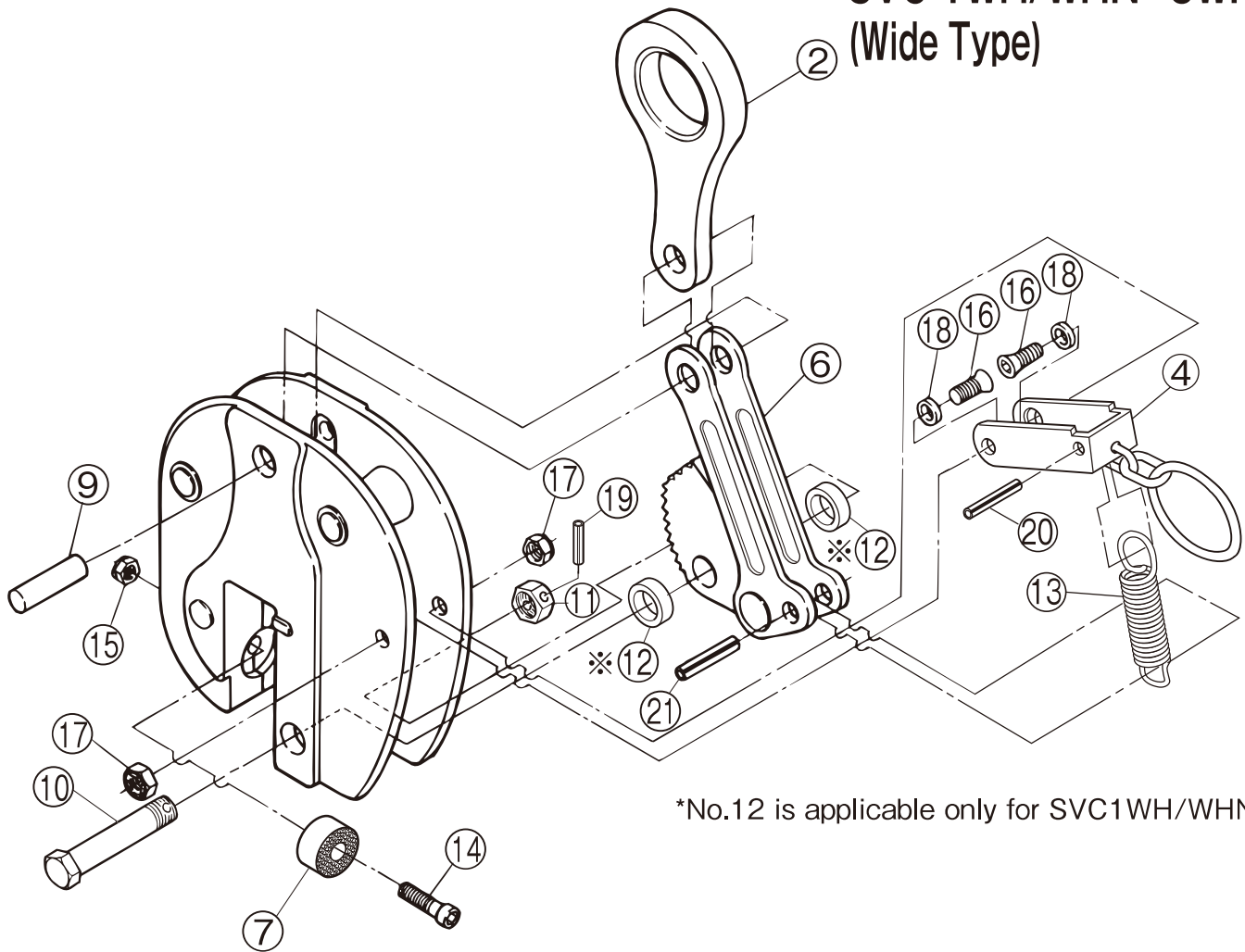


# REPLACEMENT PARTS AND ASSEMBLIES SVC 0.5H/HN~5H SVC 1WH/WHN~5WH (Wide Type)



\*No.12 is applicable only for SVC1WH/WHN.

Part No.	Part Name	Item No.	Set Q'ty	Part No.	Part Name	Item No.	Set Q'ty
Shackle Assembly		SVH		Pad Assembly		SVP	
2	Shackle	SVCH	1	7	Pad	SVCP	1
9	Shackle Support Pin	SVCY	1	14	Bolt (for Pad)	SVCV	1
Cam Assembly		SVT		15	Nylon Nut (for Pad)		1
6	Cam/Link	SVCT	1	Lock Handle Assembly		SVG	
21	Spring Pin (for Link)	SVCU	1	4	Lock Handle	SVCG	1
Cam Support Pin Assembly		SVK		16	Hex. Hole Disc Bolt (for Lock Handle)	SVCF	2
10	Support Bolt (for Cam)	SVCK	1	17	U-Nut (for Lock Handle)		2
11	Support Nut (for Cam)		1	18	Collar (for Lock Handle)	SVCZ	2
19	Spring Pin (for Support Bolt)	SVCO	1	20	Spring Pin (for Lock Handle)	SVCQ	1
*12	Collar (for Cam)	SVCR	2				
				13	Spring	SVCS	1

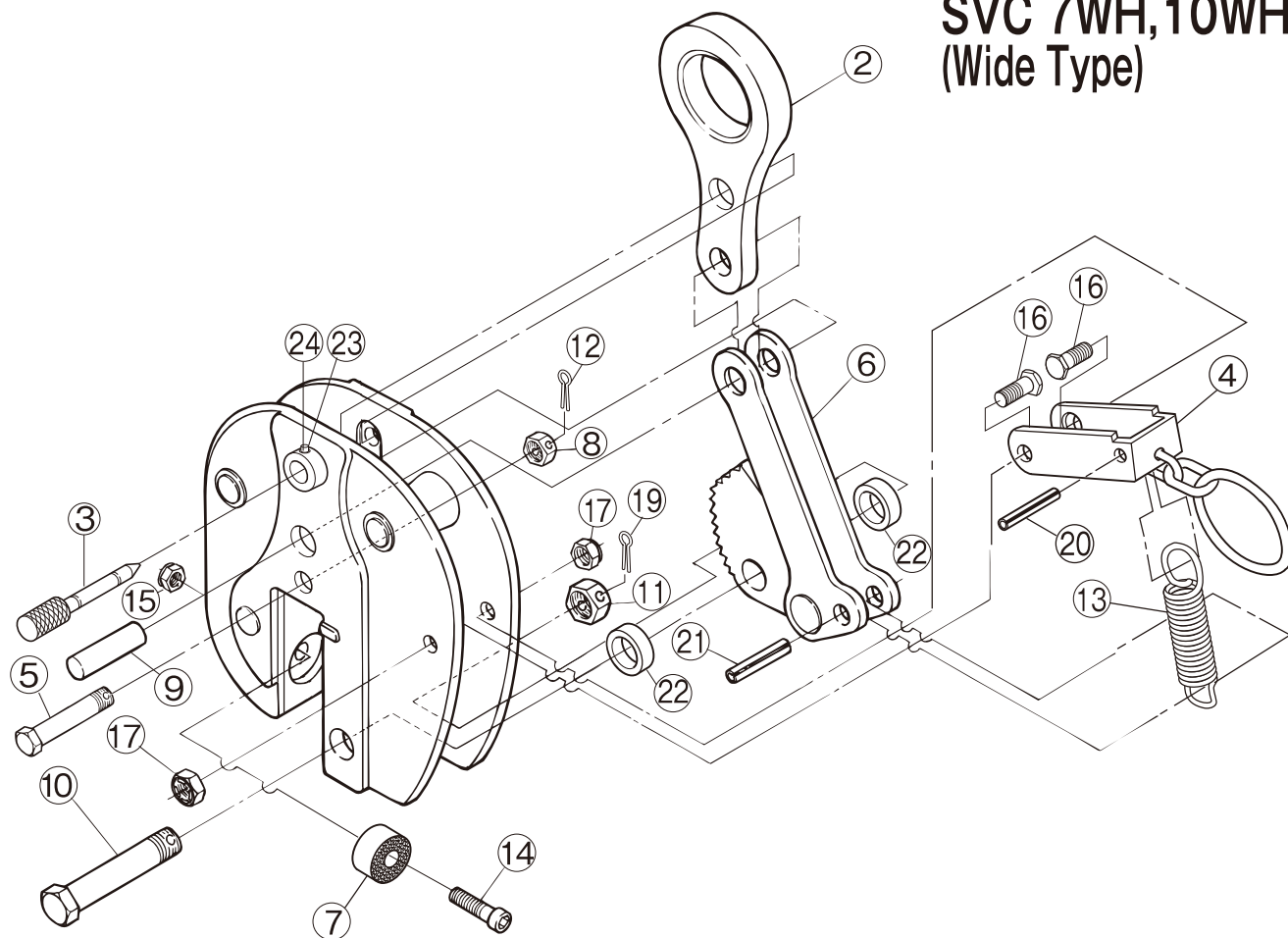
1)When ordering, specify the rated capacity (ton) of item No. and H/HN or WH/WHN.

(Example: Cam and link for SVC3H is SLCT3H. Cam and link for SVC3WH is SVCT3WH.)

2)Periodic lubrication is required at pin and working portion. (Take off oil from the teeth of pad and cam.)

# REPLACEMENT PARTS AND ASSEMBLIES

**SVC 7H,10H  
SVC 7WH,10WH  
(Wide Type)**



Part No.	Part Name	Item No.	Set Q'ty	Part No.	Part Name	Item No.	Set Q'ty
Shackle Assembly		SVH		Pad Assembly		SVP	
2	Shackle	SVCH	1	7	Pad	SVCP	1
9	Shackle Support Pin	SVCY	1	14	Bolt (for Pad)	SVCV	1
Retaining Pin Assembly		SVN		15	Nylon Nut (for Pad)		1
5	Retaining Bolt	SVCN	1	Lock Handle Assembly		SVG	
8	Retaining Nut		1	4	Lock Handle	SVCG	1
12	Split Pin (for retaining)	SVCA	1	16	Hex. Hole Disc Bolt (for Lock Handle)	SVCF	2
Cam Assembly		SVT		17	U-Nut (for Lock Handle)		2
6	Cam/Link	SVCT	1	20	Spring Pin (for Lock Handle)	SVCQ	1
21	Spring Pin (for Link)	SVCU	1				
Cam Support Pin Assembly		SVK		13	Spring	SVCS	1
10	Support Bolt (for Cam)	SVCK	1				
11	Support Nut (for Cam)		1	Open Lock Assembly		SVB	
19	Split Pin (for Support Bolt)	SVCW	1	3	Open Lock Pin	SVCB	1
22	Collar (for Cam)	SVCR	2	23	Plunger Bolt	SVCC	2
				24	Plunger Nut		2

1)When ordering, specify the rated capacity (ton) of item No. and H or WH.

(Example: Cam and link for SVC7H is SLCT7H. Cam and link for SVC7WH is SVCT7WH.)

2)Periodic lubrication is required at pin and working portion. (Take off oil from the teeth of pad and cam. )