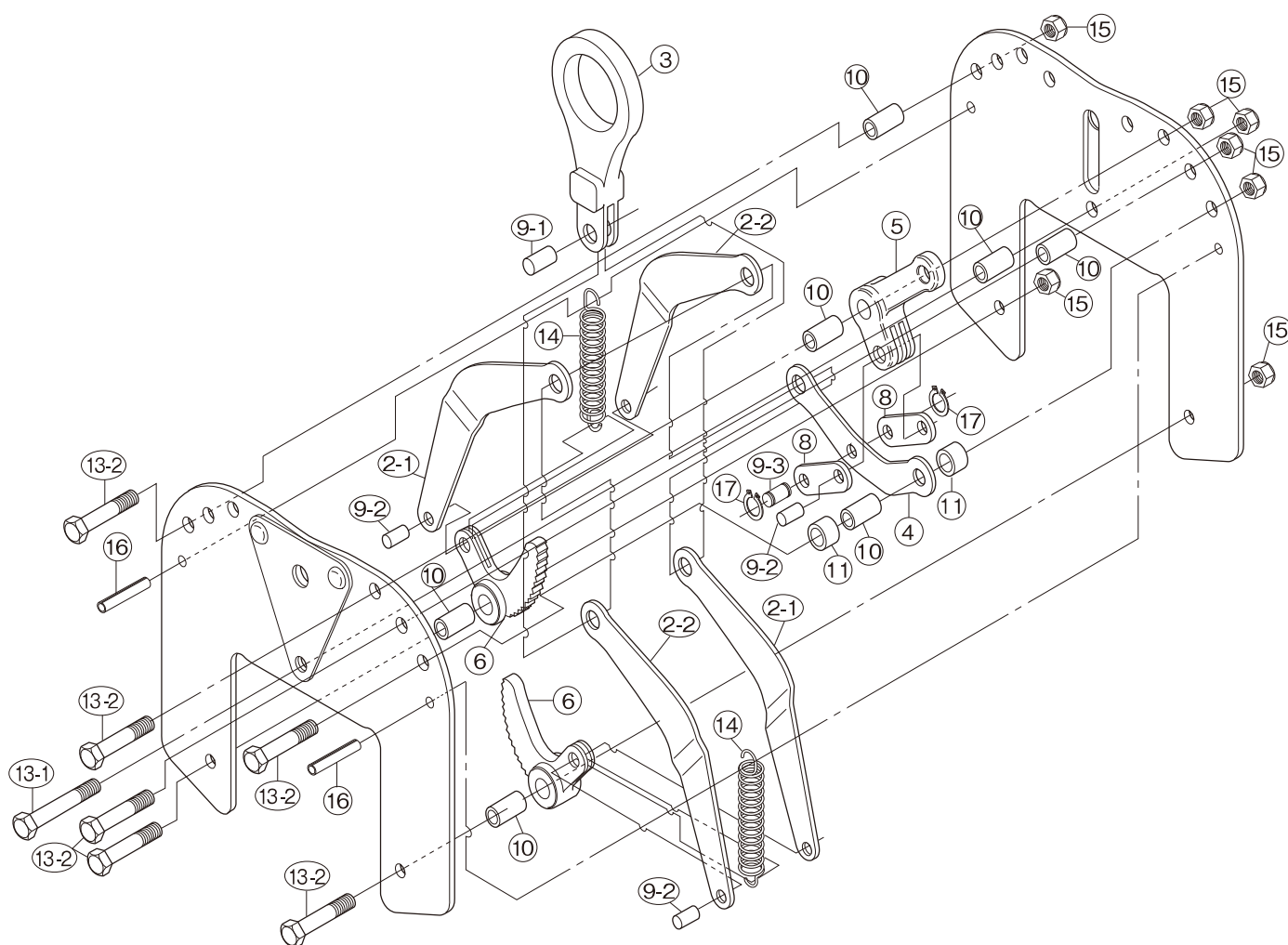


■ REPLACEMENT PARTS AND FITTINGS



※ The main body is caulked by rivets and cannot be disassembled as shown.

Part No.	Part Name	Item No.	Q'ty	Part No.	Part Name	Item No.	Q'ty
2-1	L-shaped link A	BLCL200	2	9-3	Grooved pin	BLCE200	1
2-2	L-shaped link B		2	17	E-shaped retaining ring		2
3	Shackle	BLCH200	1	10	Collar	BLCC200	7
4	Arm	BLCA200	1	11	Roller	BLCR200	2
5	Lever	BLCD200	1	13-1	Hex. bolt (long)	BLCJ200	1
6	Cam	BLCT200	2	13-2	Hex. bolt (short)	BLCK200	6
8	Toggle link	BLCB200	2	14	Spring	BLCS200	2
9-1	Parallel pin (large)	BLCF200	1	15	U-shaped nut	BLCN200	7
9-2	Parallel pin (small)	BLCG200	3	16	Spring pin	BLCP200	2